

TIDES ONE DEPARTURE (RNAV)

TAMPA DEP CON
119.65 353.575
AWOS-3
119.275
CLNC DEL
118.25

RNAV 1 - DME/DME/IRU or GPS. From PSTOL - GPS.

RADAR required for non-GPS equipped aircraft.

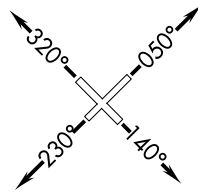
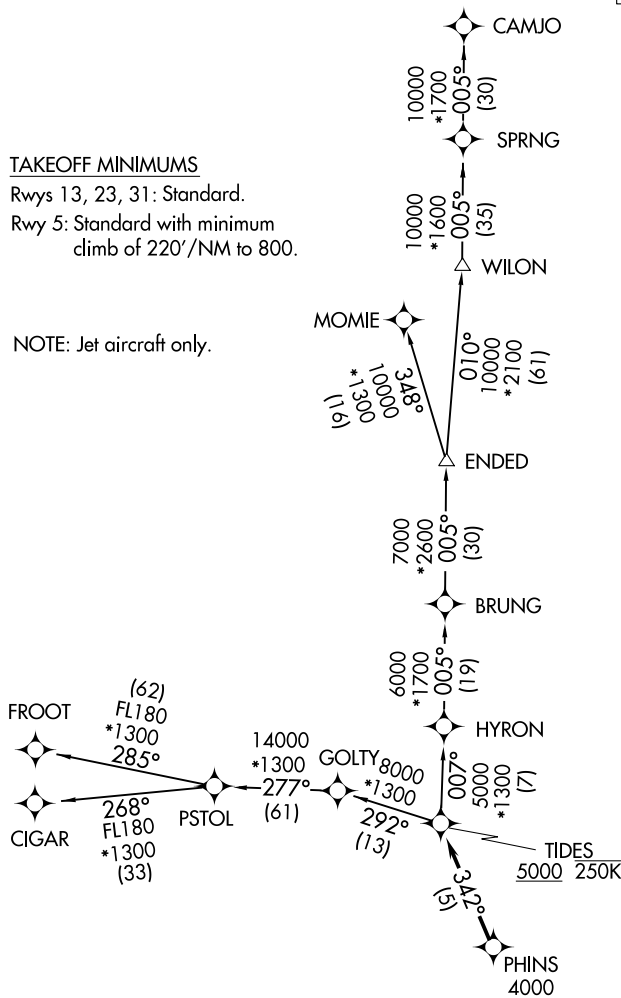
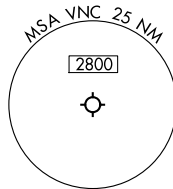
**TOP ALTITUDE:
ASSIGNED BY ATC.**

TAKEOFF MINIMUMS

Rwys 13, 23, 31: Standard.

Rwy 5: Standard with minimum
climb of 220' /NM to 800.

NOTE: Jet aircraft only.



NOTE: Chart not to scale.

(CONTINUED ON FOLLOWING PAGE)

SE-3, 26 DEC 2024 to 23 JAN 2025

SE-3, 26 DEC 2024 to 23 JAN 2025

TIDES ONE DEPARTURE (RNAV)

(TIDES1.TIDES) 16MAY24

VENICE, FLORIDA
VENICE MUNI (VNC)

TIDES ONE DEPARTURE (RNAV)



DEPARTURE ROUTE DESCRIPTION

TAKEOFF RUNWAY 5: Climb on heading 050° or as assigned by ATC, for RADAR vectors to PHINS, thence. . . .

TAKEOFF RUNWAY 13: Climb on heading 140° or as assigned by ATC, for RADAR vectors to PHINS, thence. . . .

TAKEOFF RUNWAY 23: Climb on heading 230° or as assigned by ATC, for RADAR vectors to PHINS, thence. . . .

TAKEOFF RUNWAY 32: Climb on heading 320° or as assigned by ATC, for RADAR vectors to PHINS, thence. . . .

. . . .on track 342° to cross TIDES at or above 5000 and at or below 250K. Maintain ATC assigned altitude, expect clearance to filed altitude within 10 minutes after departure.

CAMJO TRANSITION (TIDES1.CAMJO)

CIGAR TRANSITION (TIDES1.CIGAR)

FROOT TRANSITION (TIDES1.FROOT)

MOMIE TRANSITION (TIDES1.MOMIE)

SE-3, 26 DEC 2024 to 23 JAN 2025

SE-3, 26 DEC 2024 to 23 JAN 2025