

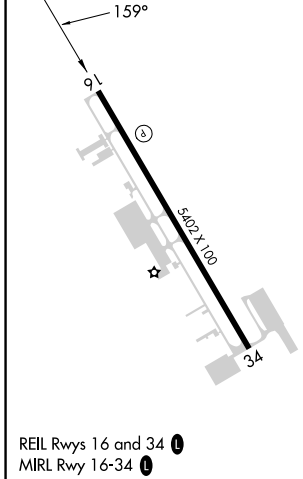
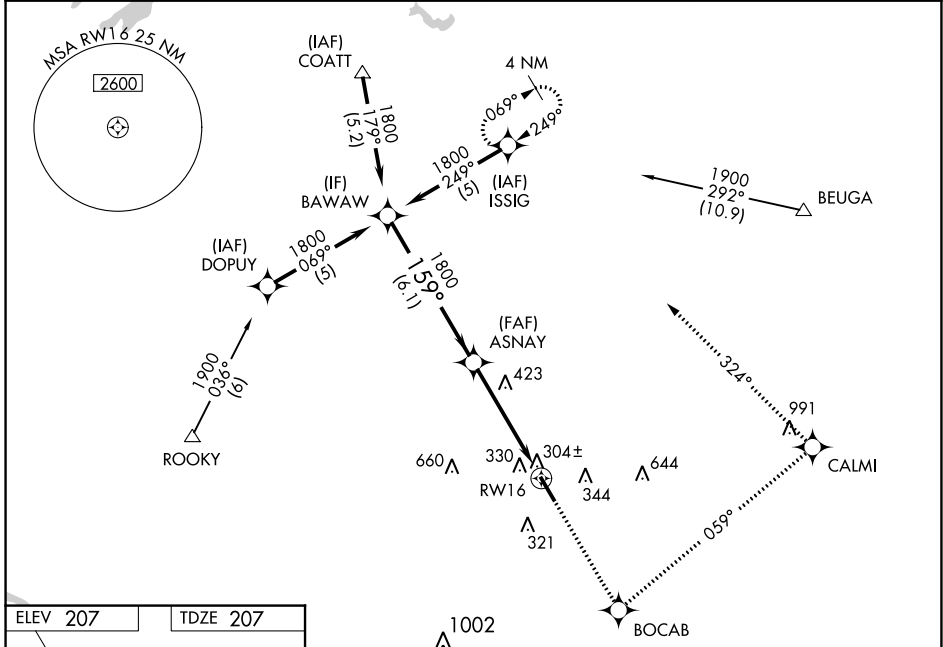
WAAS CH <b>42904</b> <b>W16A</b>	APP CRS <b>159°</b>	Rwy ldg TDZE Apt Elev	<b>5402</b> <b>207</b> <b>207</b>
--	------------------------	-----------------------------	---

# RNAV (GPS) RWY 16

HANOVER COUNTY MUNI (OFP)

RNP APCH.	MISSED APPROACH: Climb to 2000 direct BOACAB and left turn via 059° track to CALMI and left turn via 324° track to ISSIG and hold.
<p>When local altimeter setting not received, use Richmond Intl altimeter setting and increase all DA 37 feet and all MDA 40 feet; increase LNAV/VNAV all Cats and LNAV Cats C/D visibility ¼ mile. Baro-VNAV NA when using Richmond Intl altimeter setting. For uncompensated Baro-VNAV systems LNAV/VNAV NA below -15°C or above 54°C. Rwy 16 helicopter visibility reduction below ¾ SM NA.</p>	

ASOS <b>119.025</b>	POTOMAC APP CON (001°-185°) <b>126.4 307.2</b> (186°-360°) <b>126.75 307.2</b>	CLNC DEL <b>125.4</b>	UNICOM <b>122.7 (CTAF) 0</b>
------------------------	--	--------------------------	---------------------------------



BAWAW Procedure Turn NA 1800 GP 3.00° TCH 40	2000	BOCAB	CALMI	ISSIG
	↑	✧	✧	✧
		tr 059°	tr 324°	
	ASNAY VGSI and RNAV glidepath not coincident (VGSI Angle 3.00/TCH 40).			
	6.1 NM		4.8 NM	
CATEGORY	A	B	C	D
LPV DA	535-1¼ 328 (400-1¼)			
LNAV/VNAV DA	564-1¼ 357 (400-1¼)			
LNAV MDA	700-1	493 (500-1)	700-1½ 493 (500-1½)	700-1½ 493 (500-1½)
CIRCLING	700-1	493 (500-1)	900-2 693 (700-2)	1020-2¾ 813 (900-2¾)

NE-3, 26 DEC 2024 to 23 JAN 2025

NE-3, 26 DEC 2024 to 23 JAN 2025