

WAAS CH 72937 W34A	APP CRS 339°	Rwy Idg TDZE Apt Elev	5402 204 207
--	------------------------	-----------------------------	---

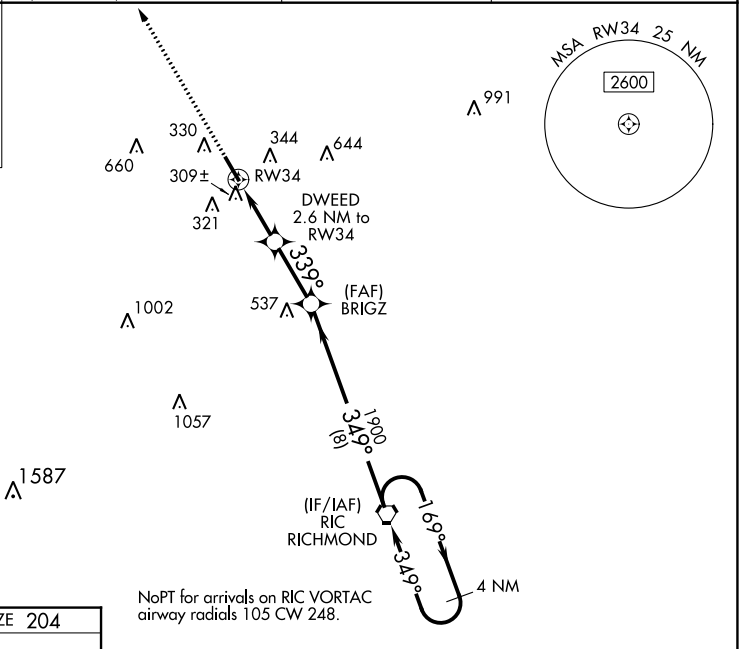
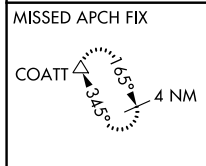
RNAV (GPS) RWY 34

HANOVER COUNTY MUNI (OFP)

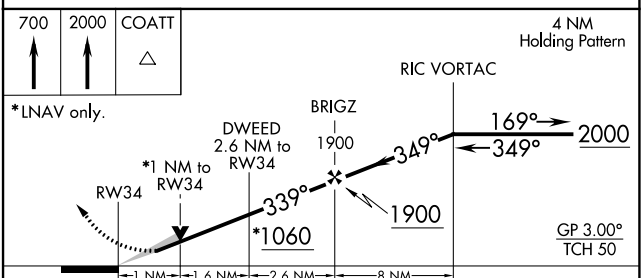
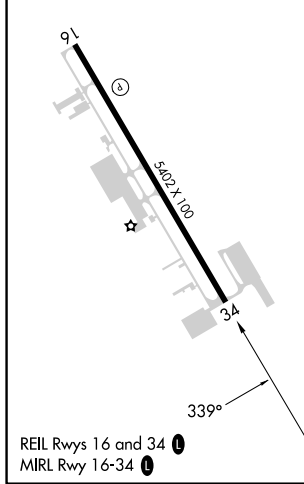
⚠ For uncompensated Baro-VNAV systems, LNAV/VNAV NA below -11°C (13°F) or above 54°C (130°F). DME/DME RNP-0.3 NA. When local altimeter setting not received, use Richmond Intl altimeter setting and increase all DA 37 feet and all MDA 40 feet; increase LNAV/VNAV all Cats and LNAV Cats C/D visibility 1/8 mile. Baro-VNAV and VDP NA when using Richmond Intl altimeter setting.

MISSED APPROACH: Climb to 700 then climb to 2000 direct COATT and hold.

ASOS 119.025	POTOMAC APP CON (001°-185°) 126.4 307.2 (186°-360°) 126.75 307.2	CLNC DEL 125.4	UNICOM 122.7 (CTAF) 0
------------------------	--	--------------------------	---------------------------------



ELEV 207	TDZE 204
----------	----------



CATEGORY	A	B	C	D
LPV DA		454-1	250 (300-1)	
LNAV/VNAV DA		493-1	289 (300-1)	
LNAV MDA		560-1	356 (400-1)	
C CIRCLING	660-1	453 (500-1)	900-2 693 (700-2)	1020-2¾ 813 (900-2¾)

NE-3, 26 DEC 2024 to 23 JAN 2025

NE-3, 26 DEC 2024 to 23 JAN 2025