

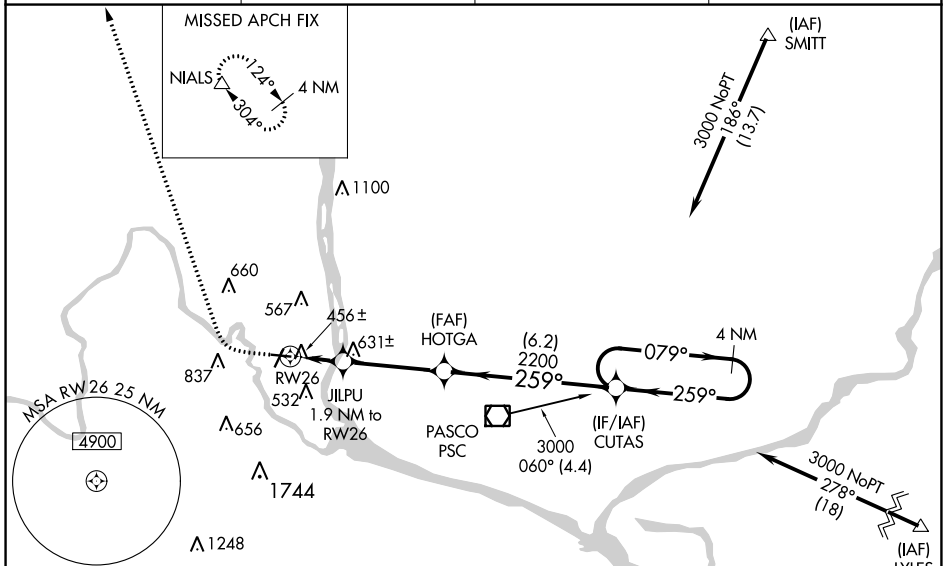
WAAS CH <b>77903</b> <b>W26A</b>	APP CRS <b>259°</b>	Rwy Idg TDZE Apt Elev	<b>4001</b> <b>389</b> <b>394</b>
--	------------------------	-----------------------------	---

# RNAV (GPS) RWY 26

RICHLAND (R.LD)

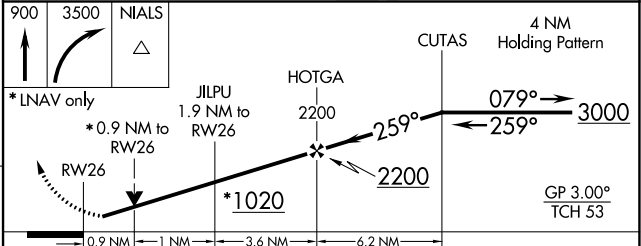
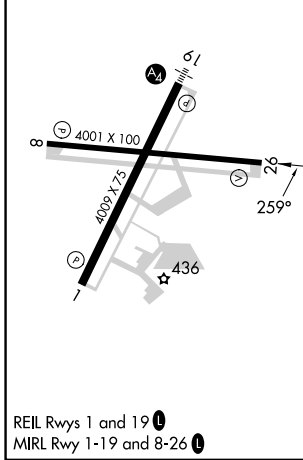
RNP APCH.		MISSED APPROACH: Climb to 900 then climbing right turn to 3500 direct NIALS and hold.	
<p><b>⚠ NA</b> When local altimeter setting not received, use Pasco altimeter setting and increase all DA 21 feet and all MDA 40 feet and increase RNAV/VNAV Cats A and B visibility ½ mile, Circling Cat C visibility ¼ mile. Baro-VNAV NA when using Pasco altimeter setting. For uncompensated Baro-VNAV systems, LNAV/VNAV NA below -15°C (4°F) or above 41°C (107°F). Rwy 26 helicopter visibility reduction below ¾ SM NA.</p>			

AWOS-3PT <b>132.675</b>	SPOKANE APP CON* <b>128.75 377.2</b>	CLNC DEL <b>122.4</b>	UNICOM <b>122.7 (CTAF) 0</b>
----------------------------	---	--------------------------	---------------------------------



ELEV <b>394</b>	TDZE <b>389</b>
-----------------	-----------------

Procedure NA for arrivals at PSC VOR/DME on V187 southwest bound and on V281 southeast bound.



CATEGORY	A	B	C	D
LPV DA	657-7/8	268 (300-7/8)	657-1	268 (300-1)
LNAV/VNAV DA	639-3/4	250 (300-3/4)	639-1	250 (300-1)
LNAV MDA	720-1 331 (400-1)			
<b>C</b> CIRCLING	920-1 526 (600-1)	1000-1 606 (700-1)	1200-2 1/4 806 (900-2 1/4)	1940-3 1546 (1600-3)

NW-1, 26 DEC 2024 to 23 JAN 2025

NW-1, 26 DEC 2024 to 23 JAN 2025