

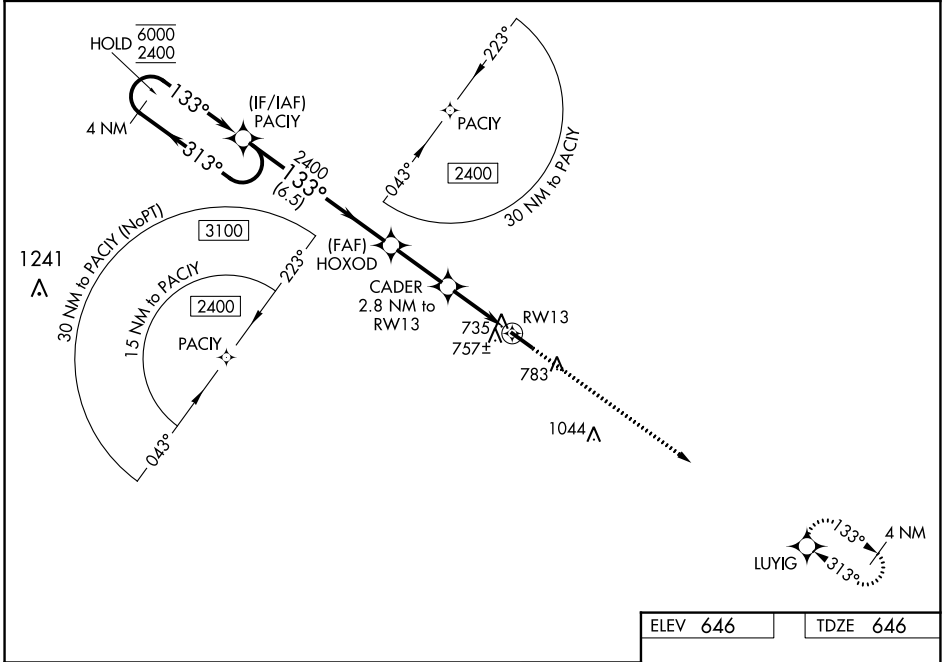
WAAS CH 62809 W13A	APP CRS 133°	Rwy Idg 5020 TDZE 646 Apt Elev 646
--	------------------------	---

RNAV (GPS) RWY 13

WASHINGTON/WILKES COUNTY (IIY)

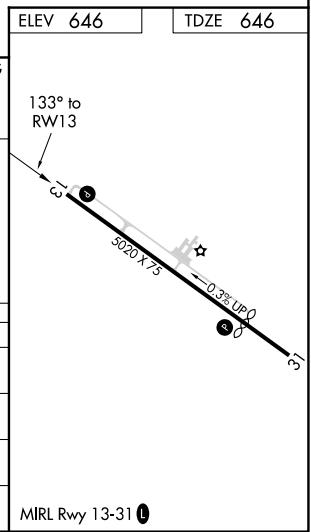
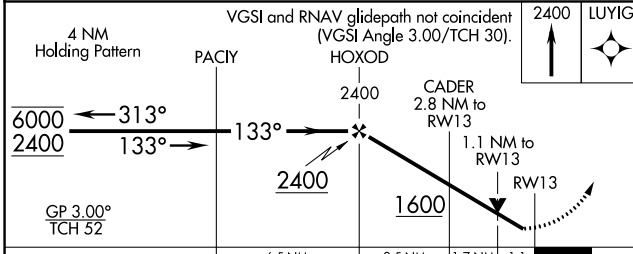
RNP APCH-GPS.	MISSED APPROACH: Climb to 2400 direct LUYIG and hold.
<p>Rwy 13 helicopter visibility reduction below 3/4 SM NA. For uncompensated Baro-VNAV systems, LNAV/VNAV NA below -16°C or above 54°C.</p>	

AWOS-3 118.375	AUGUSTA APP CON* 126.8 270.3	UNICOM 122.7 (CTAF) 0
--------------------------	--	---------------------------------



SE-4, 26 DEC 2024 to 23 JAN 2025

SE-4, 26 DEC 2024 to 23 JAN 2025



CATEGORY	A	B	C	D
LPV DA	958-7/8	312 (400-7/8)		NA
LNAV/VNAV DA	907-7/8	261 (300-7/8)		NA
LNAV MDA	1020-1	374 (400-1)		NA
CIRCLING	1080-1 434 (500-1)	1100-1 454 (500-1)	1100-1 1/2 454 (500-1 1/2)	NA