

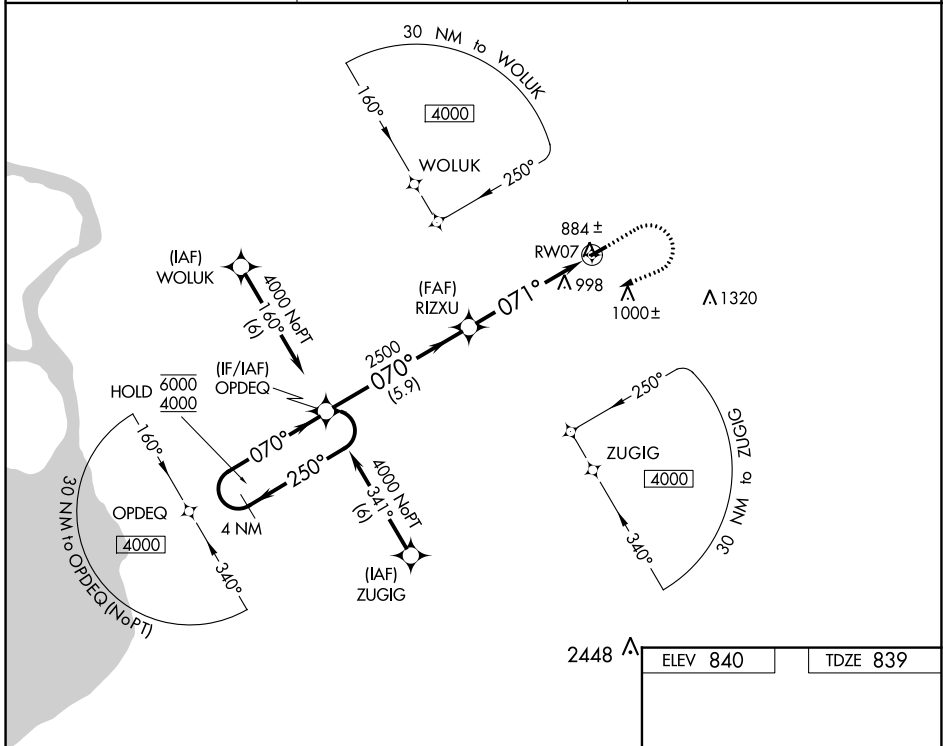
WAAS CH 93633 W07A	APP CRS 071°	Rwy Idg TDZE 839 Apt Elev 840	3268
--	------------------------	---	-------------

RNAV (GPS) RWY 7

AKRON/JESSON FLD (9G3)

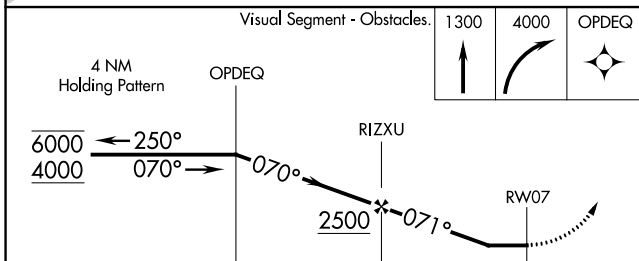
RNP APCH.	MISSED APPROACH: Climb to 1300 then climbing right turn to 4000 direct OPDEQ and hold, continue climb-in-hold to 4000.
▼ Procedure NA at night. Use Buffalo altimeter setting. ▲ NA Rwy 7 helicopter visibility reduction below 1 SM NA.	

BUF ASOS 135.35	BUFFALO APP CON 126.15 263.125	UNICOM 122.725 (CTAF) 0
---------------------------	--	-----------------------------------



NE-2, 26 DEC 2024 to 23 JAN 2025

NE-2, 26 DEC 2024 to 23 JAN 2025



2448	ELEV 840	TDZE 839
------	----------	----------

MIRL Rwy 7-25 0
REIL Rwy 25 0

CATEGORY	A	B	C	D
LP MDA	1180-1	341 (400-1)		NA
LNAV MDA	1300-1	461 (500-1)		NA
CIRCLING	1380-1	540 (600-1)		NA