

(FEALX2.FEALX) 22167

AL-5972 (FAA)

POMPANO BEACH AIRPARK (PMP)
POMPANO BEACH, FLORIDA

FEALX TWO DEPARTURE (RNAV)

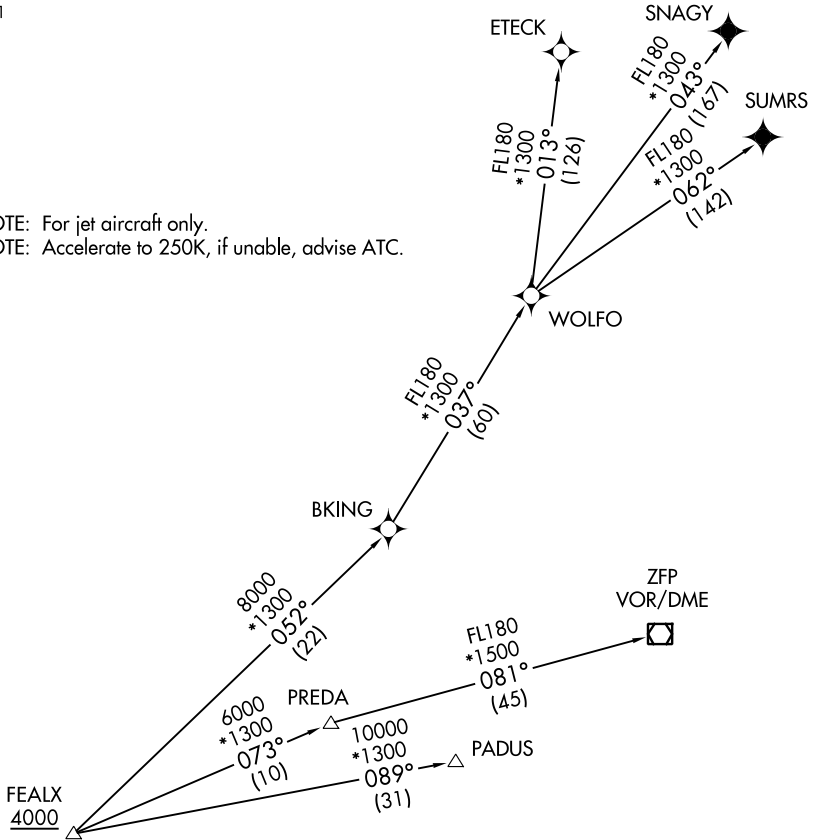
ATIS
120.55
GND CON
121.9
POMPANO BEACH TOWER ★
125.4 (CTAF)
MIAMI DEP CON
126.05 251.1

**TOP ALTITUDE:
ASSIGNED BY ATC**

RNAV 1 - DME/DME/IRU or GPS.
From WOLFO to SNAGY, SUMRS - GPS.

RADAR required.

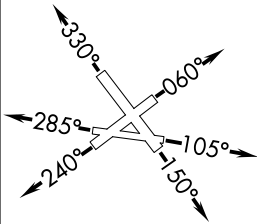
NOTE: For jet aircraft only.
NOTE: Accelerate to 250K, if unable, advise ATC.



TAKEOFF MINIMUMS

Rwys 6, 24, 28, 33: Standard.

Rwys 10, 15: Standard with minimum climb of 500' per NM to 520.



(NARRATIVE ON FOLLOWING PAGE)

NOTE: Chart not to scale.

FEALX TWO DEPARTURE (RNAV)

(FEALX2.FEALX) 19MAY22

POMPANO BEACH, FLORIDA
POMPANO BEACH AIRPARK (PMP)

SE-3, 26 DEC 2024 to 23 JAN 2025

SE-3, 26 DEC 2024 to 23 JAN 2025

FEALX TWO DEPARTURE (RNAV)



DEPARTURE ROUTE DESCRIPTION

TAKEOFF RUNWAY 6: Climb on heading 060° or as assigned by ATC for vectors to cross FEALX at or above 4000, thence. . .

TAKEOFF RUNWAY 10: Climb on heading 105° or as assigned by ATC for vectors to cross FEALX at or above 4000, thence. . .

TAKEOFF RUNWAY 15: Climb on heading 150° or as assigned by ATC for vectors to cross FEALX at or above 4000, thence. . .

TAKEOFF RUNWAY 24: Climb on heading 240° or as assigned by ATC for vectors to cross FEALX at or above 4000, thence. . .

TAKEOFF RUNWAY 28: Climb on heading 285° or as assigned by ATC for vectors to cross FEALX at or above 4000, thence. . .

TAKEOFF RUNWAY 33: Climb on heading 330° or as assigned by ATC for vectors to cross FEALX at or above 4000, thence. . .

. . .(transition). Maintain ATC assigned altitude. Expect clearance to filed altitude ten minutes after departure.

ETECK TRANSITION (FEALX2.ETECK)

FREEPORT TRANSITION (FEALX2.ZFP)

PADUS TRANSITION (FEALX2.PADUS)

SNAGY TRANSITION (FEALX2.SNAGY)

SUMRS TRANSITION (FEALX2.SUMRS)

WOLFO TRANSITION (FEALX2.WOLFO)

SE-3, 26 DEC 2024 to 23 JAN 2025

SE-3, 26 DEC 2024 to 23 JAN 2025