

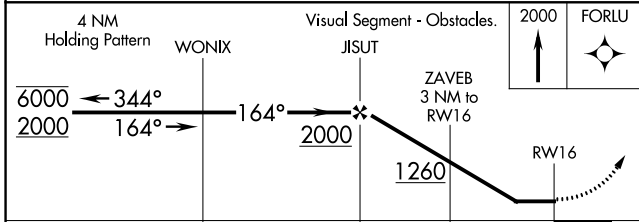
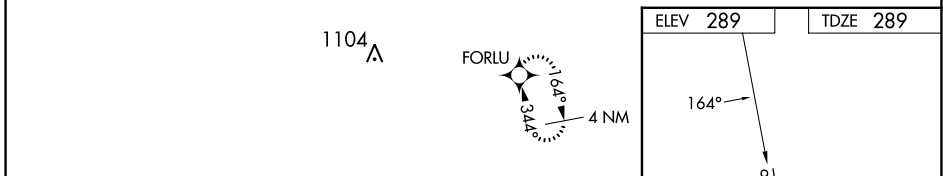
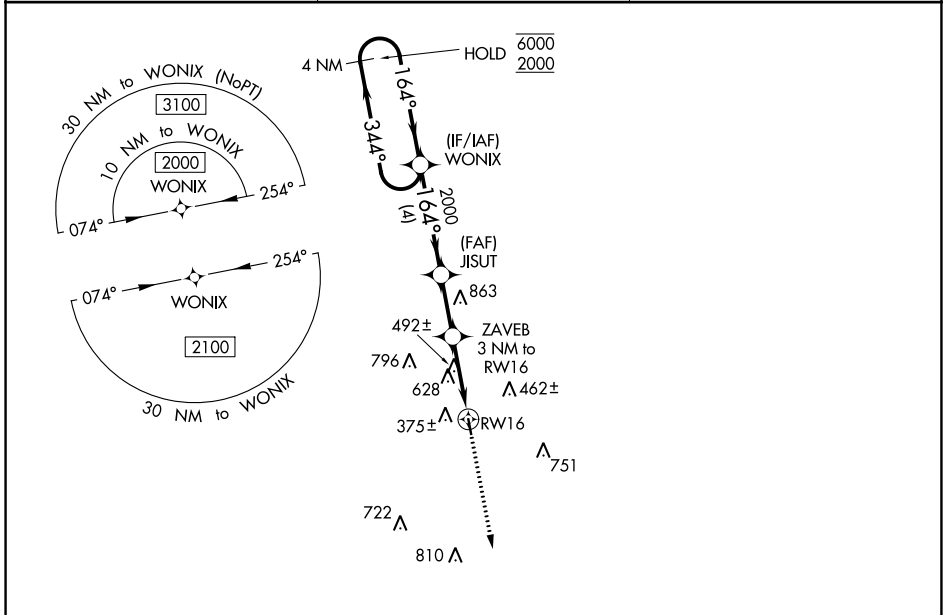
WAAS CH 87125 W16A	APP CRS 164°	Rwy Idg TDZE Apt Elev	3218 289 289
--	------------------------	-----------------------------	---

RNAV (GPS) RWY 16

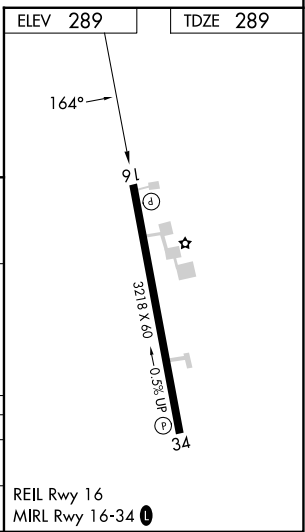
KENEDY RGNL (2R.9)

RNP APCH.	MISSED APPROACH: Climb to 2000 direct FORLU and hold.
<p>Procedure NA at night. When local altimeter setting not received, use Pleasanton altimeter setting. Rwy 16 helicopter visibility reduction below 1 SM NA.</p>	

AWOS 3-PT 118.45	HOUSTON CENTER 134.6 322.5	UNICOM 123.0 (CTAF) 0
----------------------------	--------------------------------------	---------------------------------



CATEGORY	A	B	C	D
LP MDA	860-1	571 (600-1)	NA	
LNAV MDA	1040-1 751 (800-1)	1040-1¼ 751 (800-1¼)	NA	



SC-3, 26 DEC 2024 to 23 JAN 2025

SC-3, 26 DEC 2024 to 23 JAN 2025