

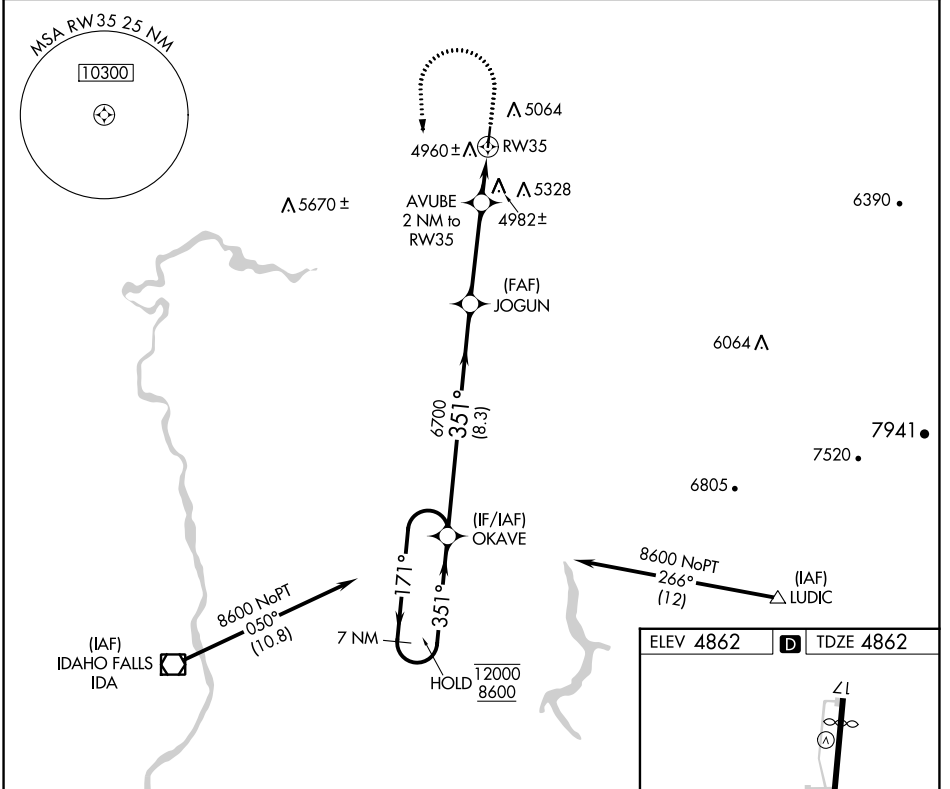
APP CRS <b>351°</b>	Rwy Idg TDZE Apt Elev	<b>3900</b> <b>4862</b> <b>4862</b>
------------------------	-----------------------------	---

# RNAV (GPS) RWY 35

REXBURG-MADISON COUNTY (R.X.E)

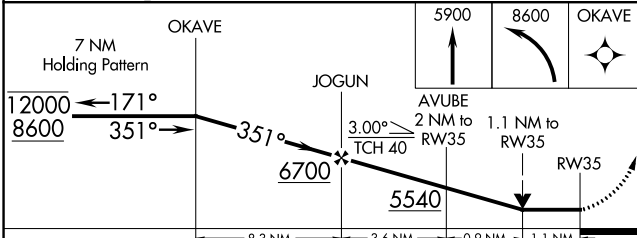
RNP APCH - GPS.	MISSED APPROACH: Climb to 5900 then climbing left turn to 8600 direct OKAVE and hold.
Rwy 35 helicopter visibility reduction below 3/4 SM NA.	

ASOS <b>135.075</b>	SALT LAKE CENTER <b>128.35 239.25</b>	UNICOM <b>122.8 (CTAF) 0</b>
------------------------	--	---------------------------------



NW-1, 26 DEC 2024 to 23 JAN 2025

NW-1, 26 DEC 2024 to 23 JAN 2025



CATEGORY	A	B	C	D
LNAV MDA	5240-1 378 (400-1)			
CIRCLING	5380-1 518 (600-1)	5580-1 718 (800-1)	5680-2½ 818 (900-2½)	5760-3 898 (900-3)

