

LYONS, KANSAS

AL-5982 (FAA)

23054

WAAS CH 99339 W17A	APP CRS 174°	Rwy Idg TDZE Apt Elev	4400 1692 1692
--	------------------------	-----------------------------	---

RNAV (GPS) RWY 17

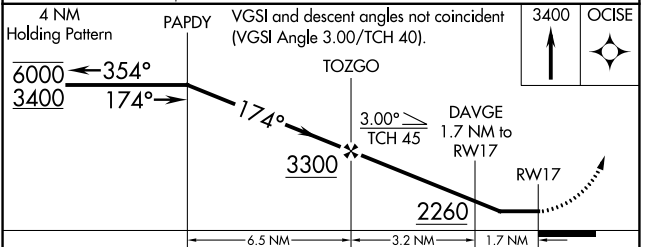
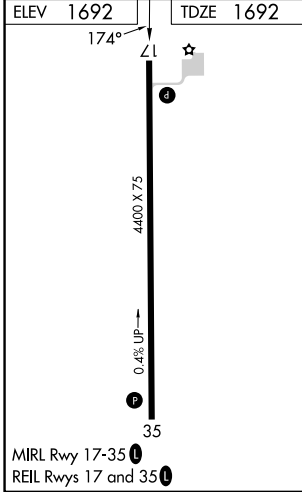
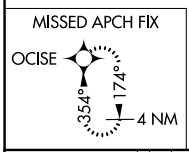
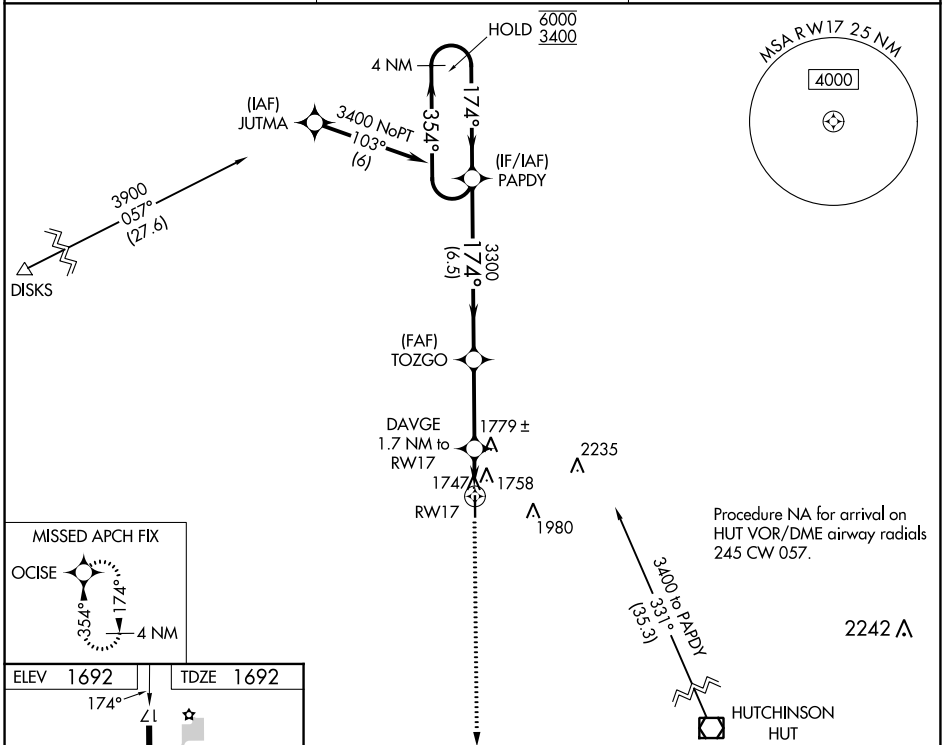
LYONS-RICE COUNTY MUNI (LYO)

RNP APCH.

▼ Rwy 17 helicopter visibility reduction below 1 SM NA.
 ▲ Straight-in/Circling Rwy 17 NA at night.
 When local altimeter setting not received, use Hutchinson altimeter setting.

MISSED APPROACH: Climb to 3400 direct OCISE and hold.

AWOS-3P 119.925	KANSAS CITY CENTER 118.8 322.425	UNICOM 122.8 (CTAF) 0
---------------------------	--	---------------------------------



CATEGORY	A	B	C	D
LP MDA	2080-1	388 (400-1)	NA	
LNAV MDA	2120-1	428 (500-1)	NA	
C CIRCLING	2260-1	568 (600-1)	NA	

LYONS, KANSAS
 Orig-A 08NOV18

38°20'N-98°14'W

LYONS-RICE COUNTY MUNI (LYO)
RNAV (GPS) RWY 17

NC-2, 26 DEC 2024 to 23 JAN 2025

NC-2, 26 DEC 2024 to 23 JAN 2025