

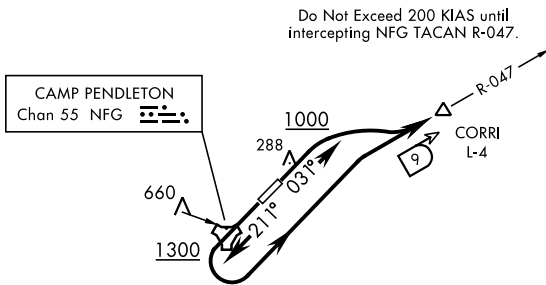
CORRI THREE DEPARTURE (OBSTACLE)(CORRI3•CORRI)

AL-5985 [USN]

| Rwy | Knots | 60 | 120 | 180 | 240 | 300 | 360 |
|-----|----------|-----|-----|------|------|------|------|
| 3 | V/V(fpm) | 335 | 670 | 1005 | 1340 | 1675 | 2010 |
| 21 | V/V(fpm) | 442 | 884 | 1326 | 1768 | 2210 | 2652 |

Minimum Climb Rate to 1000

ATIS ★ 285.45
 CLNC DEL
 134.675 271.6
 GND CON
 134.675 360.2
 TOWER★
 128.775 340.2
 SOCAL DEP CON
 127.3 323.0



CAMP PENDLETON
 Chan 55 NFG

RADAR REQUIRED
NOT FOR CIVIL USE
NOT FOR USE BY CAT D/E AIRCRAFT

DEPARTURE ROUTE DESCRIPTION

TAKE-OFF RWY 3: Climb on heading 031° to 1000 then climbing right turn to 288° and intercept NFG TACAN R-047 to CORRI.

TAKE-OFF RWY 21: Climb on heading 211° to 1300 then climbing left turn to 288° and intercept NFG TACAN R-047 to CORRI.