

MUNN THREE DEPARTURE (OBSTACLE) (MUNN 3•ROBNN)

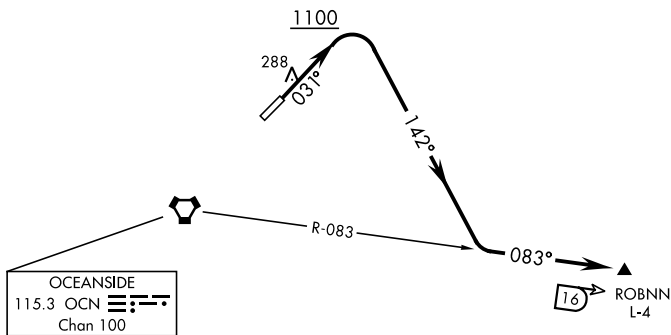
OCEANSIDE, CALIFORNIA

ATIS ★285.45
 CLNC DEL
 134.675 271.6
 GND CON
 134.675 360.2
 TOWER ★
 128.775 340.2
 SOCAL DEP CON
 127.3 323.0

AL-5985 [USN]

Rwy	Knots	60	120	180	240	300	360
3	V/V(fpm)	378	756	1134	1512	1890	2268

Minimum Climb Rate to 1000



SW-3, 26 DEC 2024 to 23 JAN 2025

SW-3, 26 DEC 2024 to 23 JAN 2025

DEPARTURE ROUTE DESCRIPTION

TAKE-OFF RWY 3: Climb on heading 031° to 1100 then climbing right turn heading 142° to intercept OCN VORTAC R-083 to ROBNN. Cross ROBNN at 5000 or as directed by ATC.