

WAAS CH <b>82124</b> <b>W01A</b>	APP CRS <b>013°</b>	Rwy Idg TDZE Apt Elev	<b>5003</b> <b>817</b> <b>817</b>
--	------------------------	-----------------------------	---

# RNAV (GPS) RWY 1

DOUGLAS HUNTER FLD (1M5)

RNP APCH.

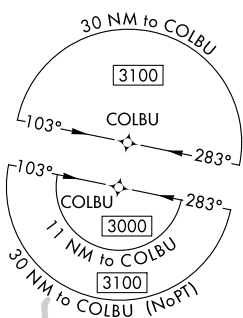
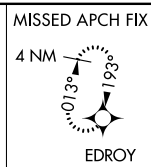
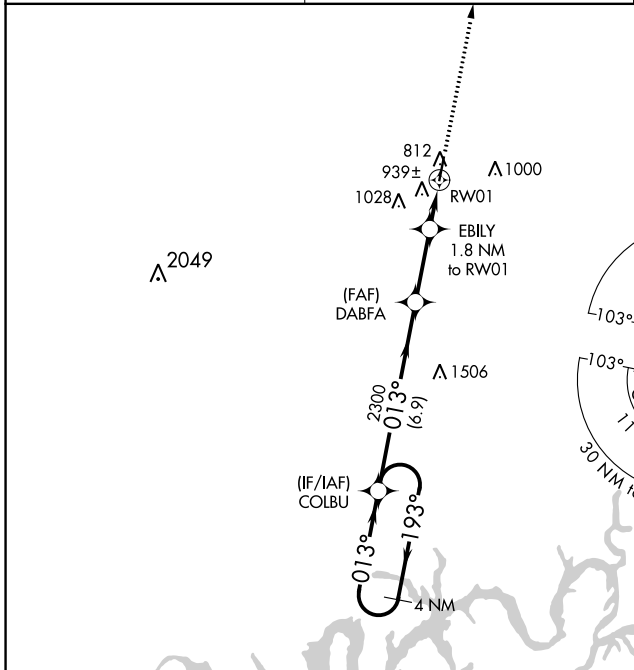
**⚠** Baro-VNAV NA when using Bowling Green altimeter setting. For uncompensated Baro-VNAV systems, LNAV/VNAV NA below -16°C or above 54°C. Rwy 1 helicopter visibility reduction below 3/4 SM NA. When local altimeter setting not received, use Bowling Green altimeter setting and increase LPV DA to 1180 and all visibilities 1/8 mile; increase all LNAV/VNAV DA to 1210 and all visibilities 1/4 mile; increase all MDA 100 feet and increase LNAV Cats C/D visibility 1/4 mile.

MISSED APPROACH: Climb to 3000 direct EDROY and hold.

AWOS-3PT <b>118.175</b>
----------------------------

NASHVILLE APP CON <b>119.35 372.0</b>
--

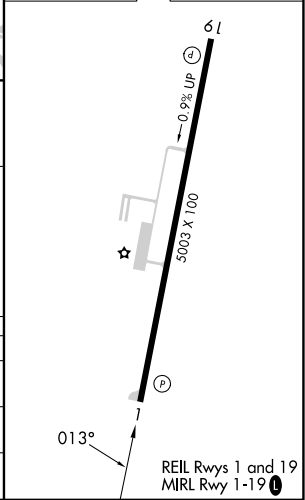
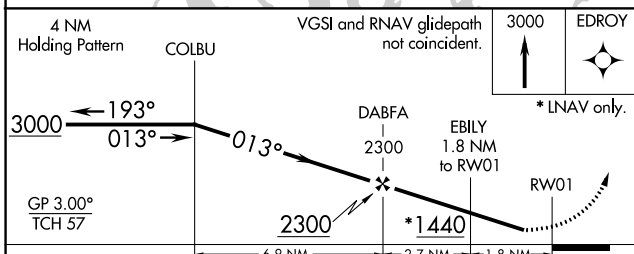
UNICOM <b>122.975 (CTAF) 0</b>
-----------------------------------



SE-1, 26 DEC 2024 to 23 JAN 2025

SE-1, 26 DEC 2024 to 23 JAN 2025

ELEV 817	TDZE 817
----------	----------



CATEGORY	A	B	C	D
LPV DA	1090-1		273 (300-1)	
LNAV/VNAV DA	1120-1		303 (400-1)	
LNAV MDA	1200-1 383 (400-1)		1200-1 1/8 383 (400-1 1/8)	