

APP CRS	Rwy Idg	5000
033°	TDZE	75
	Apt Elev	75

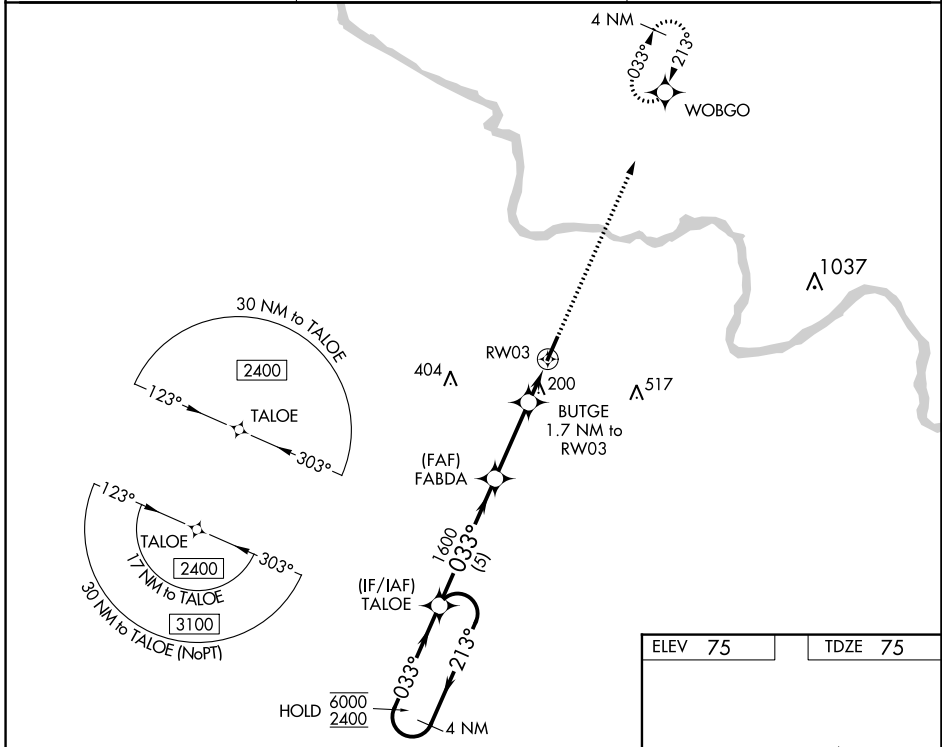
RNAV (GPS) RWY 3

MARTIN COUNTY (MCZ)

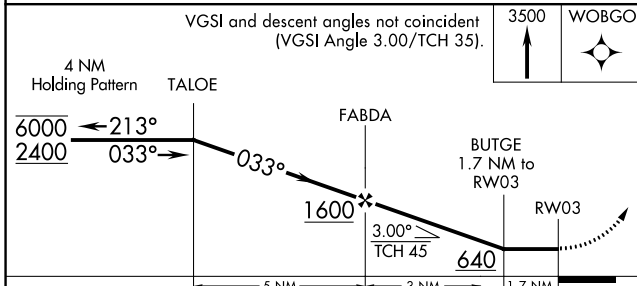
RNP APCH - GPS.
 ⚠ Rwy 3 helicopter visibility reduction below 1 SM NA.
 ⚠ Straight-in Rwy 3 NA at night, Circling Rwy 3 NA at night.

MISSED APPROACH: Climb to 3500 direct WOBGO and hold, continue climb-in-hold to 3500.

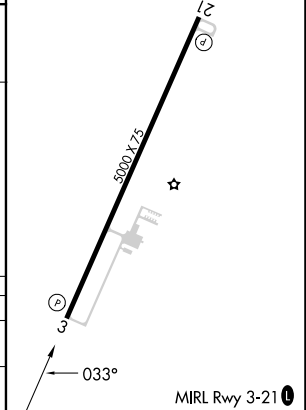
AWOS-3P 118.65	WASHINGTON CENTER 123.85 279.65	UNICOM 122.8 (CTAF) 0
--------------------------	---	---------------------------------



ELEV 75	TDZE 75
---------	---------



CATEGORY	A	B	C	D
LNVA MDA	460-1	385 (400-1)	460-1½	385 (400-1½)
CIRCLING	500-1 425 (500-1)	540-1 465 (500-1)	680-1¾ 605 (700-1¾)	880-2½ 805 (900-2½)



SE-2, 26 DEC 2024 to 23 JAN 2025

SE-2, 26 DEC 2024 to 23 JAN 2025