

WAAS CH 66005 W07A	APP CRS 066°	Rwy Idg TDZE Apt Elev	5002 2275 2275
--	------------------------	-----------------------------	---

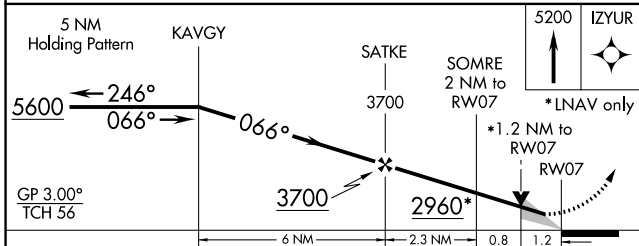
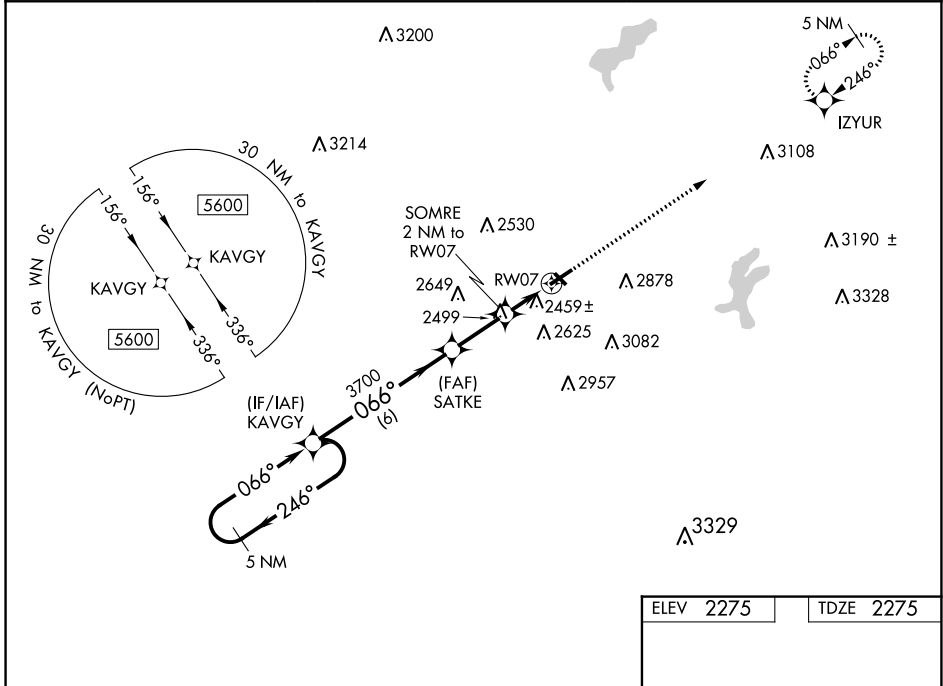
RNAV (GPS) RWY 7

SOMERSET COUNTY (2G9)

⚠ NA Baro-VNAV and VDP NA when using Johnstown altimeter setting. For uncompensated Baro-VNAV systems, LNAV/VNAV NA below -19°C (-2°F) or above 53°C (128°F). DME/DME RNP-0.3 NA. Circling Rwy 25 NA at night. Circling to Rwy 14-32 NA. When local altimeter setting not received, use Johnstown altimeter setting and increase all DA 44 feet and all MDA 60 feet. Increase LPV all Cats visibility 1/8 mile and LNAV/VNAV all Cats visibility 1/4 mile.

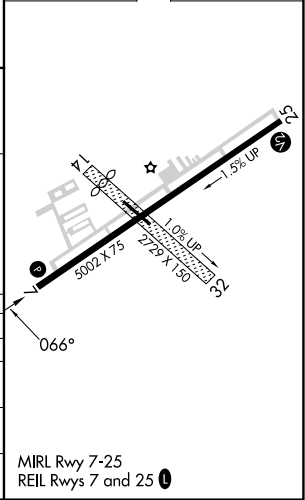
MISSED APPROACH:
Climb to 5200 direct IZYUR and hold.

AWOS-3P 133.8	JOHNSTOWN APP CON * 121.2 299.2	UNICOM 122.8 (CTAF) 0
-------------------------	---	---------------------------------



ELEV 2275	TDZE 2275
-----------	-----------

CATEGORY	A	B	C	D
LPV DA		2525-1	250 (300-1)	
LNAV/VNAV DA		2640-1 1/8	365 (400-1 1/8)	
LNAV MDA	2720-1	445 (500-1)	2720-1 3/8	445 (500-1 1/8)
C CIRCLING	2820-1 545 (600-1)	2920-1 645 (700-1)	3460-3 1185 (1200-3)	3520-3 1245 (1300-3)



NE-4, 26 DEC 2024 to 23 JAN 2025

NE-4, 26 DEC 2024 to 23 JAN 2025