

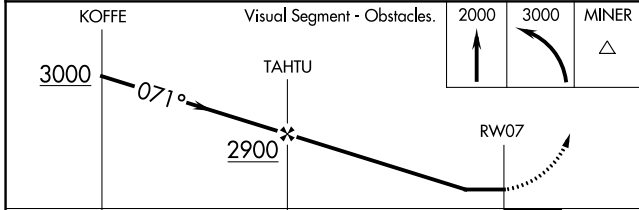
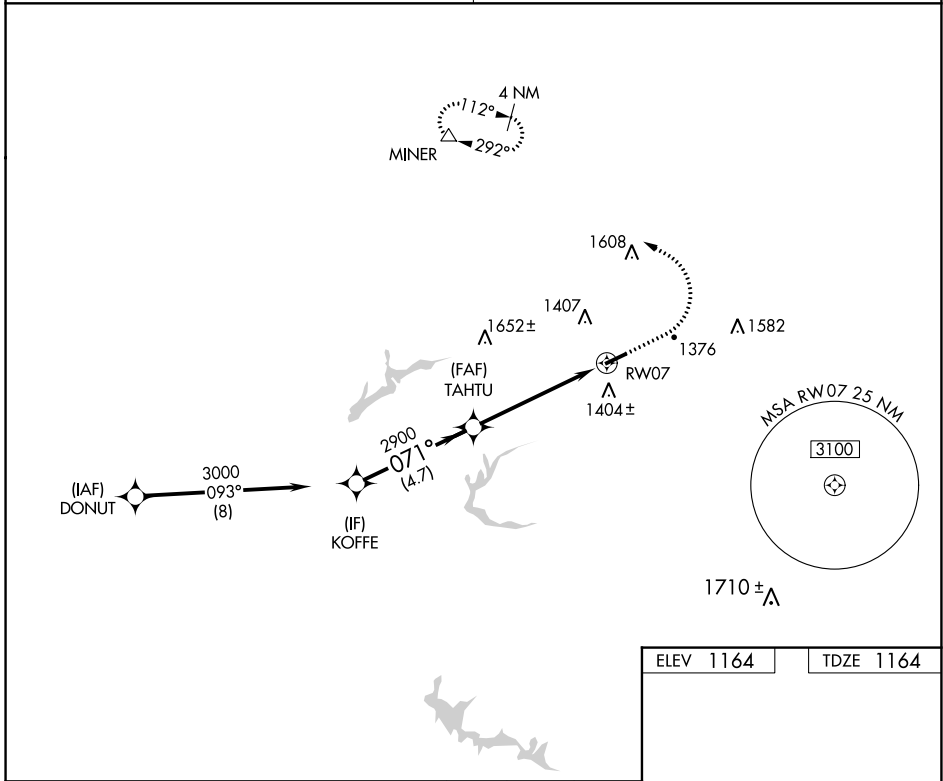
WAAS CH 62930 W07A	APP CRS 071°	Rwy Idg TDZE Apt Elev	4300 1164 1164
--	------------------------	-----------------------------	---

RNAV (GPS) RWY 7

CARROLL COUNTY-TOLSON (T'SO)

RNP APCH.	Procedure NA at night. Use Akron-Canton Rgnl altimeter setting; when not received use New Philadelphia altimeter and increase all MDA 20 feet. Rwy 7 helicopter visibility reduction below 1 SM NA.	MISSED APPROACH: Climb to 2000 then climbing left turn to 3000 direct MINER and hold.
-----------	---	---

CLEVELAND APP CON★ 125.5 371.875	UNICOM 122.7 (CTAF) 0
--	---------------------------------



CATEGORY	Visual Segment - Obstacles.		MINER
	A	B	
LP MDA	1760-1	596 (600-1)	NA
LNAV MDA	1820-1	656 (700-1)	NA
C CIRCLING	1840-1	676 (700-1)	NA

ELEV 1164	TDZE 1164
-----------	-----------

REIL Rwy 7 and 25 0
MIRL Rwy 7-25 0

EC-2, 26 DEC 2024 to 23 JAN 2025

EC-2, 26 DEC 2024 to 23 JAN 2025