

WAAS CH <b>87038</b> <b>W19A</b>	APP CRS <b>188°</b>	Rwy Idg TDZE Apt Elev	<b>4346</b> <b>685</b> <b>685</b>
--	------------------------	-----------------------------	---

# RNAV (GPS) RWY 19

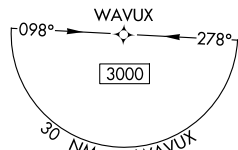
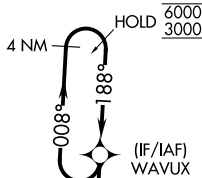
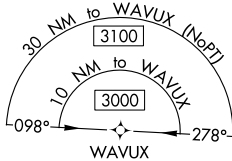
PICKAWAY COUNTY MEML (CYO)

RNP APCH

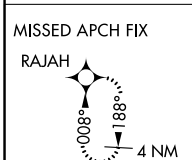
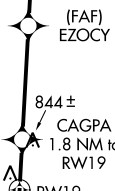
Baro-VNAV and VDP NA when using Rickenbacker Intl altimeter setting. For uncompensated Baro-VNAV systems, LNAV/VNAV NA below -16°C or above 54°C. Use Chillicothe altimeter setting, when not received use Rickenbacker Intl altimeter setting and increase LPV DA to 985 feet, LNAV/VNAV DA to 1150 feet, and all visibilities ¼ SM. Increase all MDAs 60 feet and Cats C and D visibility ¼ SM. Circling Rwy 1 NA at night. Rwy 19 helicopter visibility reduction below ¾ SM NA.

MISSED APPROACH:  
Climb to 3000 direct  
RAJAH and hold.

RZT AWOS-3 <b>119.225</b>	COLUMBUS APP CON <b>134.0 279.6</b>	UNICOM <b>122.7 (CTAF) 0</b>
------------------------------	--	---------------------------------

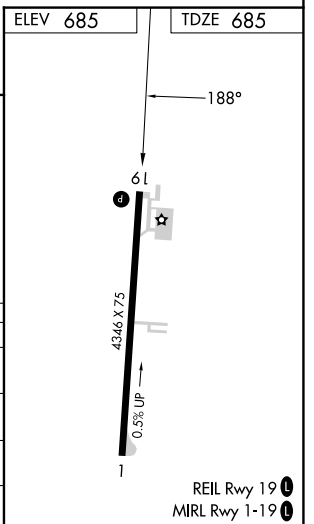
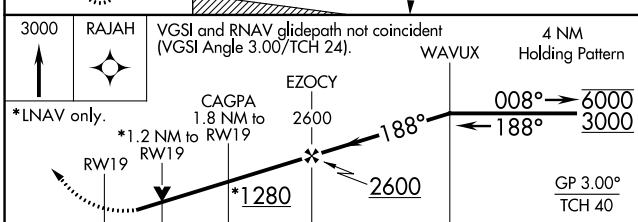


1916 A



BUCKEYE MOA

A 989



CATEGORY	A	B	C	D
LPV DA		935-7/8	250 (300-7/8)	
LNAV/VNAV DA		1100-13/8	415 (500-13/8)	
LNAV MDA	1100-1	415 (500-1)	1100-13/8	415 (500-13/8)
CIRCLING	1180-1 495 (500-1)	1200-1 515 (600-1)	1300-13/4 615 (700-13/4)	1340-2 655 (700-2)

EC-2, 26 DEC 2024 to 23 JAN 2025

EC-2, 26 DEC 2024 to 23 JAN 2025