

GARLAND FIVE DEPARTURE
(GARL5.TT) 25JAN24

CLEBURNE, TEXAS
CLEBURNE RGNL (CPT)
25JAN24

LONE STAR DEP CON
135.975 379.9
CTAF
122.8

**TOP ALTITUDE:
ASSIGNED BY ATC**

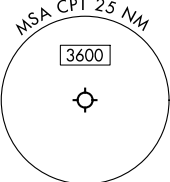
RADAR and DME required.

TAKEOFF MINIMUMS

Rwy 15: Standard.
Rwy 33: 300-1½ or standard with minimum climb of 422'/NM to 1200.

NOTE: SOLDO Transition: ATC assigned.

MAVERICK
113.1 TTT
Chan 78

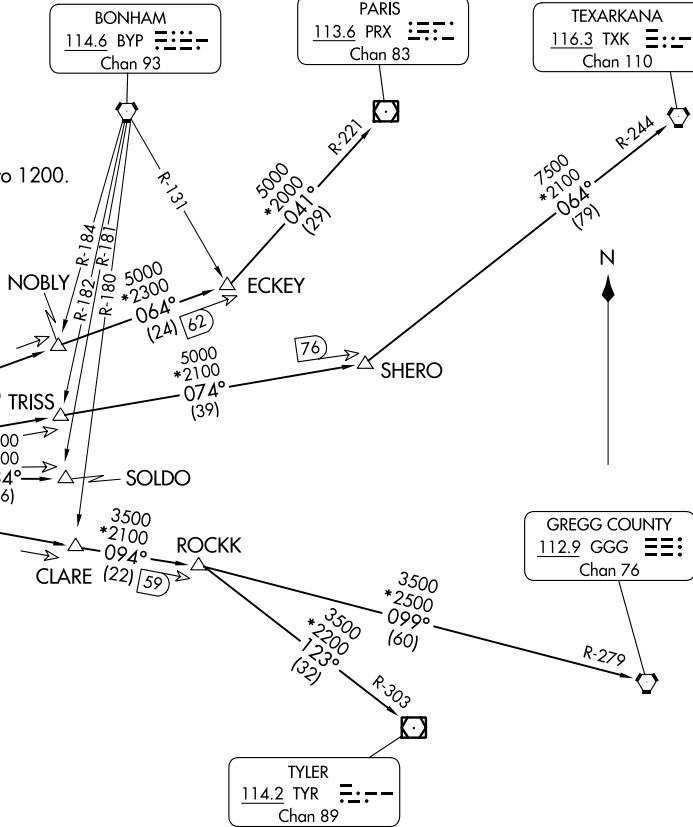


NOTE: Chart not to scale.

BONHAM
114.6 BYP
Chan 93

PARIS
113.6 PRX
Chan 83

TEXARKANA
116.3 TXK
Chan 110



(GARL5.TT) 24305
GARLAND FIVE DEPARTURE

AL-6000 (FAA)

CLEBURNE RGNL (CPT)
CLEBURNE, TEXAS

(CONTINUED ON FOLLOWING PAGE)

GARLAND FIVE DEPARTURE



DEPARTURE ROUTE DESCRIPTION

When entering controlled airspace, fly assigned heading for RADAR vectors to appropriate route. Maintain ATC assigned altitude.

GREGG COUNTY TRANSITION (GARL5.GGG): From over TTT VOR/DME on TTT R-094 to ROCKK, then on GGG R-279 to GGG VORTAC.

PARIS TRANSITION (GARL5.PRX): From over TTT VOR/DME on TTT R-064 to ECKEY, then on PRX R-221 to PRX VOR/DME.

SOLDO TRANSITION (GARL5.SOLDO): From over TTT VOR/DME on TTT R-084 to SOLDO.

TEXARKANA TRANSITION (GARL5.TXK): From over TTT VOR/DME on TTT R-074 to SHERO, then on TXK R-244 to TXK VORTAC.

TYLER TRANSITION (GARL5.TYR): From over TTT VOR/DME on TTT R-094 to ROCKK, then on TYR R-303 to TYR VOR/DME.

SC-2, 26 DEC 2024 to 23 JAN 2025

SC-2, 26 DEC 2024 to 23 JAN 2025