

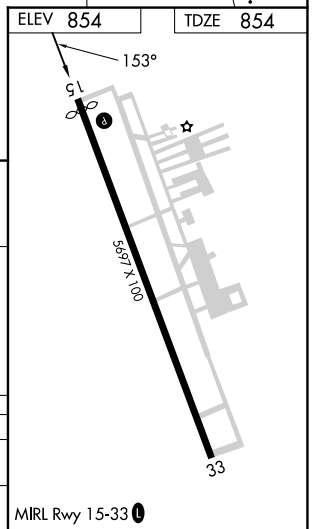
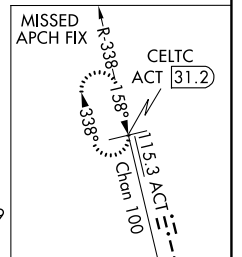
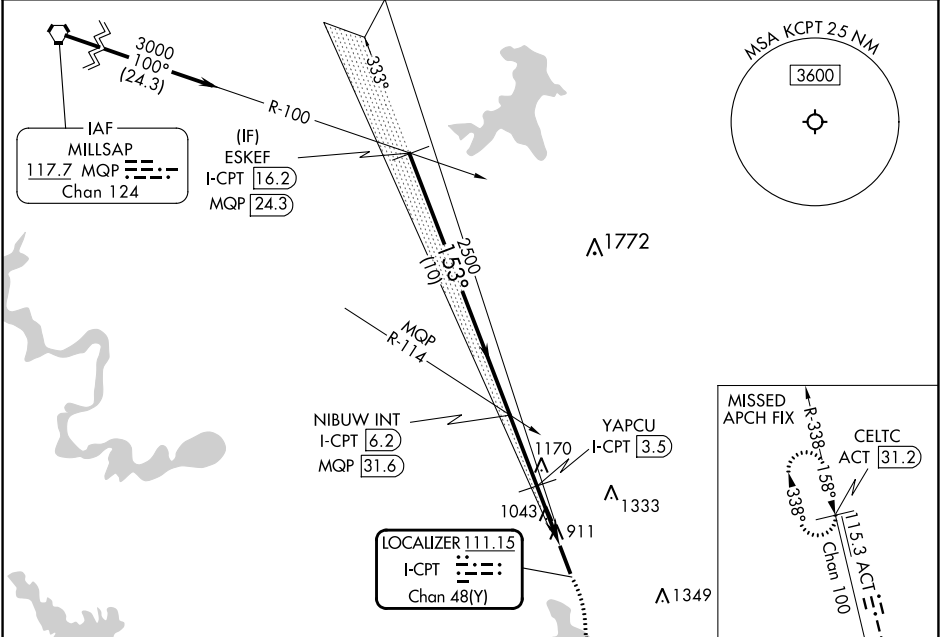
LOC I-CPT 111.15 Chan 48(Y)	APP CRS 153°	Rwy Idg TDZE Apt Elev	5512 854 854
--	------------------------	-----------------------------	---

LOC RWY 15

CLEBURNE RGNL (CPT)

DME required.	MISSED APPROACH: Climb to 1500 then climbing right turn to 3000 on heading 180° and ACT VORTAC R-338 to CELTC/ACT 31.2 DME.
▼ ▲ NA Rwy 15 helicopter visibility reduction below ¾ SM NA.	

AWOS-3 119.525	LONE STAR APP CON 135.975 379.9	UNICOM 122.8 (CTAF) 0
--------------------------	---	---------------------------------



ESKEF I-CPT 16.2	NIBUW I-CPT 6.2	YAPCU I-CPT 3.5	LOC RWY 15 I-CPT 111.15	
3000	2500	1560	1560	
10 NM	2.7 NM	0.9 NM	1.5 NM	
153°	2.97° TCH 39	180°	180°	
1500	3000	ACT R-338	CELTC ACT 31.2	
YAPCU I-CPT 3.5	I-CPT 2.6	I-CPT 1.1		
CATEGORY	A	B	C	D
S-15	1360-1	506 (600-1)	1360-1 3/8	506 (600-1 3/8)
CIRCLING	1400-1	546 (600-1)	1680-2 1/2	1700-2 3/4
			826 (900-2 1/2)	846 (900-2 3/4)

SC-2, 26 DEC 2024 to 23 JAN 2025

SC-2, 26 DEC 2024 to 23 JAN 2025