

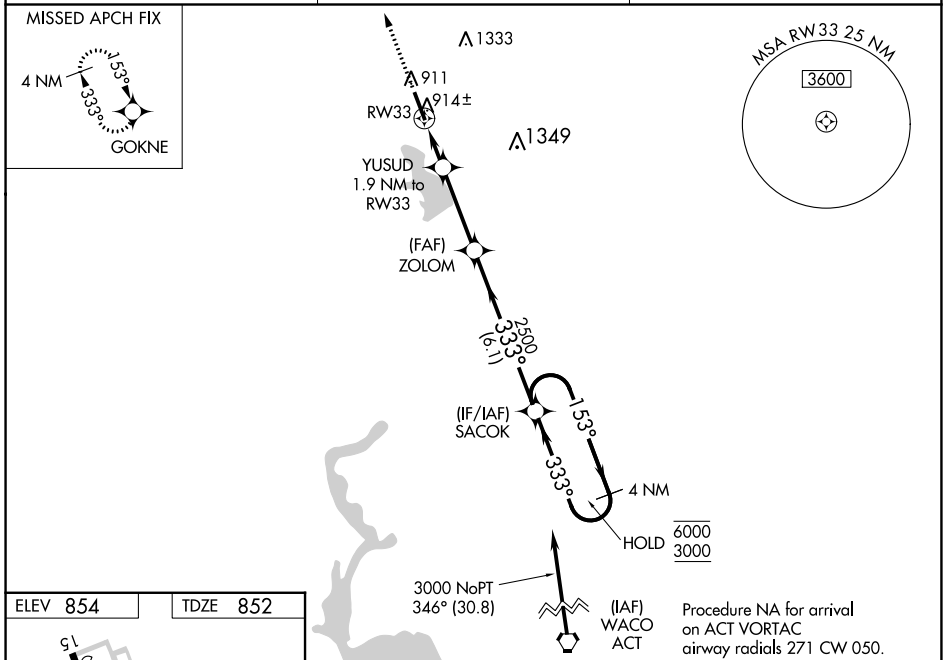
WAAS CH 82632 W33A	APP CRS 333°	Rwy Idg TDZE Apt Elev	5697 852 854
--	------------------------	-----------------------------	---

RNAV (GPS) RWY 33

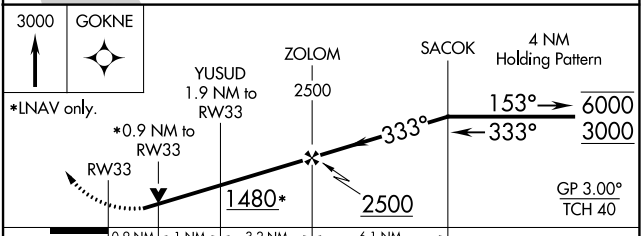
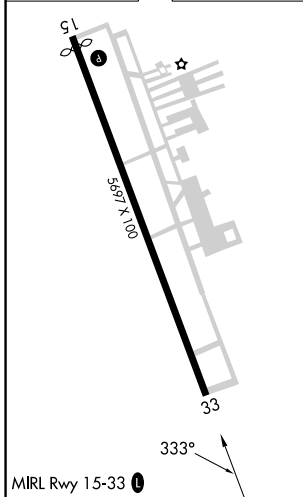
CLEBURNE RGNL (CPT)

RNP APCH.	MISSED APPROACH: Climb to 3000 direct GOKNE and hold.
<p>▼ For uncompensated Baro-VNAV systems, LNAV/VNAV NA below -16°C or above 54°C. Rwy 33 helicopter visibility reduction below ¾ SM NA.</p> <p>▲</p>	

AWOS-3 119.525	LONE STAR APP CON 135.975 379.9	UNICOM 122.8 (CTAF) 0
--------------------------	---	---------------------------------



ELEV 854	TDZE 852
-----------------	-----------------



CATEGORY	A	B	C	D
LPV DA		1102-7/8	250 (300-7/8)	
LNAV/VNAV DA		1102-7/8	250 (300-7/8)	
LNAV MDA		1180-1	328 (400-1)	
C CIRCLING	1400-1	546 (600-1)	1680-2½ 826 (900-2½)	1700-2¾ 846 (900-2¾)