

APP CRS	Rwy Idg	5000
359°	TDZE	1321
	Apt Elev	1321

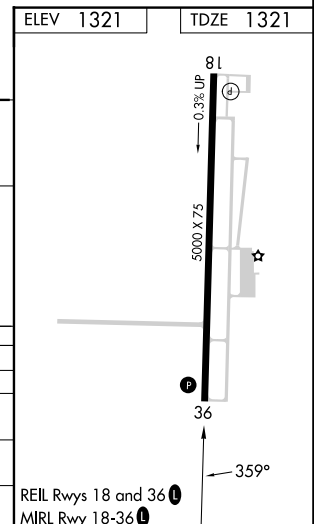
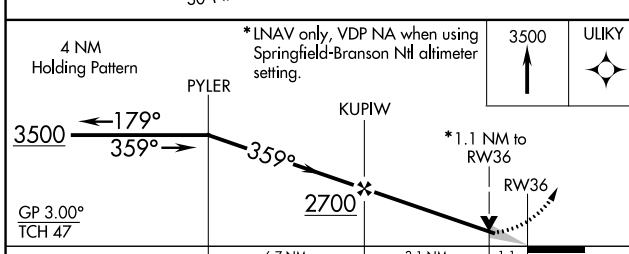
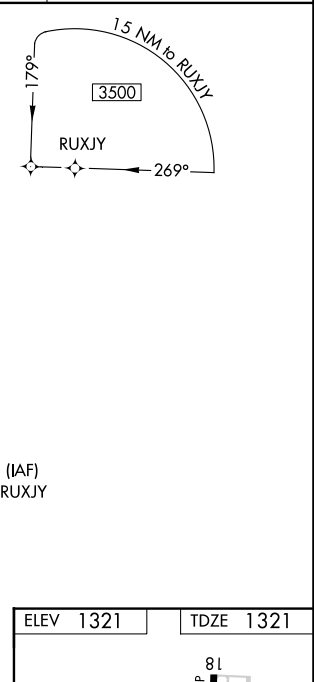
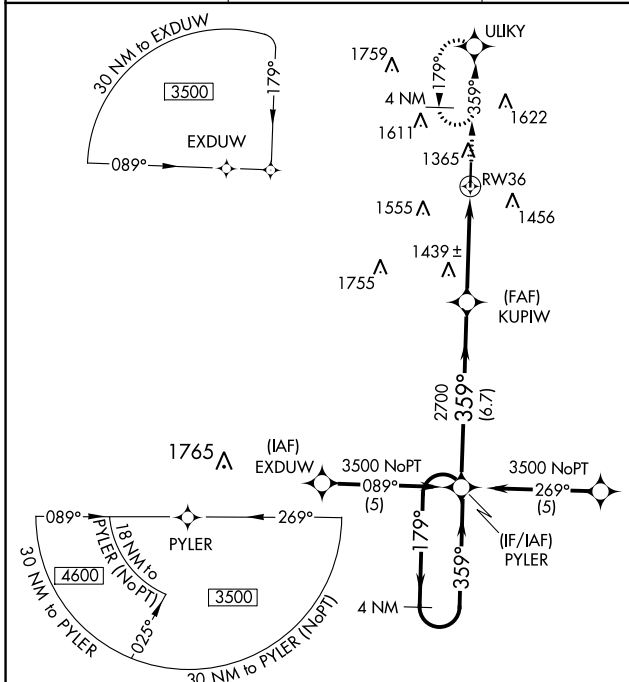
RNAV (GPS) RWY 36

FLOYD W JONES LEBANON (LBO)

When local altimeter setting not received, use Springfield-Branson Nil altimeter setting: increase LNAV/VNAV DA to 1786 feet and all visibilities $\frac{1}{8}$ SM; increase all MDAs 120 feet and LNAV visibility Cat C $\frac{3}{8}$ SM, Cat D $\frac{1}{8}$ and Circling visibility Cat C/D $\frac{1}{2}$ SM. Baro-VNAV NA when using Springfield-Branson Nil altimeter setting. Baro-VNAV NA below -17° C (1° F). DME/DME RNP-0.3 NA.

MISSED APPROACH: Climb to 3500 direct ULIKY and hold.

AWOS-3PT 118.975	SPRINGFIELD APP CON 121.1 290.5	CLNC DEL 123.725	UNICOM 122.8 (CTAF) 0
----------------------------	---	----------------------------	---------------------------------



CATEGORY	A	B	C	D
GLS PA DA	NA			
LNAV/VNAV DA	1680-1¼ 359 (400-1¼)			
LNAV MDA	1700-1 379 (400-1)		1700-1¼ 379 (400-1¼)	
CIRCLING	1820-1 499 (500-1)	1860-1 539 (600-1)	1980-1¾ 659 (700-1¾)	1980-2 659 (700-2)

REIL Rwys 18 and 36 0
MRL Rwy 18-36 0

NC-3, 26 DEC 2024 to 23 JAN 2025

NC-3, 26 DEC 2024 to 23 JAN 2025