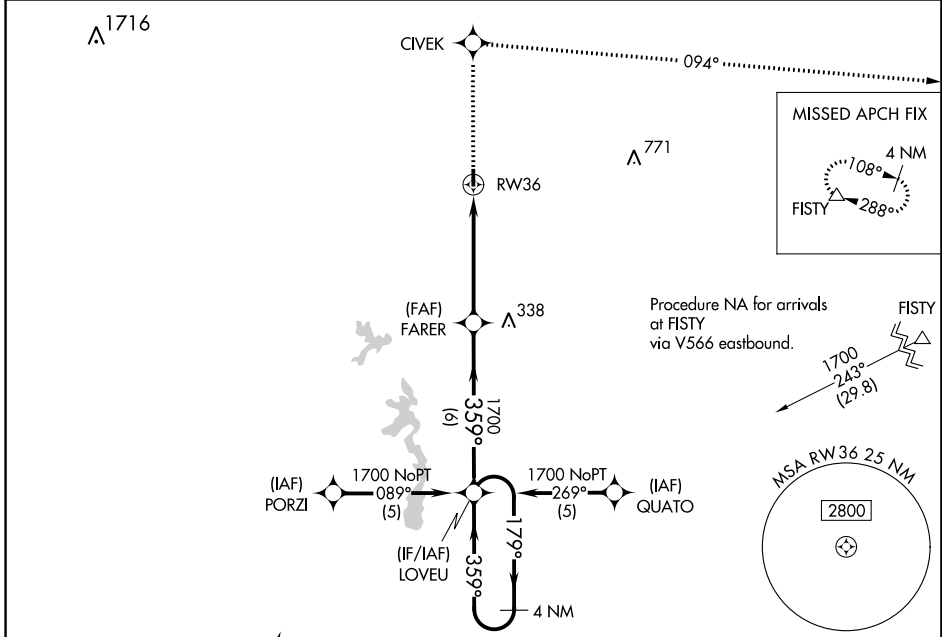


APP CRS	Rwy Idg	3005
359°	TDZE	60
	Apt Elev	62

RNAV (GPS) RWY 36

BUNKIE MUNI (2R6)

<p>NA DME/DME RNP-0.3 NA. Visibility reduction by helicopters NA. Use Alexandria Intl altimeter setting; when not received, use Esler Rgnl altimeter setting.</p>	<p>MISSED APPROACH: Climb to 4000 direct CIVEK and right turn via 094° track to FISTY and hold.</p>
<p>POLK APP CON 125.4 302.2</p>	<p>CTAF 122.9</p>

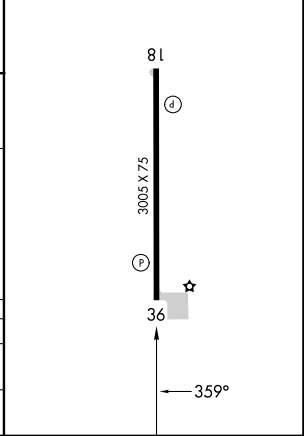


ELEV	62	TDZE	60
------	-----------	------	-----------

REIL Rwy 18 and 36 **1**
MIRL Rwy 18-36 **1**

VGSI and descent angles not coincident (VGSI Angle 3.25/TCH 26).

4 NM Holding Pattern	LOVEU	FARER	4000 CIVEK	FISTY
1700 ← 179°	← 359°	1700	094° tr	△
6 NM		5 NM		
CATEGORY	A	B	C	D
RNAV MDA	580-1 520 (600-1)		NA	
CIRCLING	580-1 518 (600-1)	660-1 598 (600-1)	NA	



SC-4, 26 DEC 2024 to 23 JAN 2025

SC-4, 26 DEC 2024 to 23 JAN 2025