

APP CRS	Rwy Idg	3000
058°	TDZE	157
	Apt Elev	157

RNAV (GPS) RWY 6

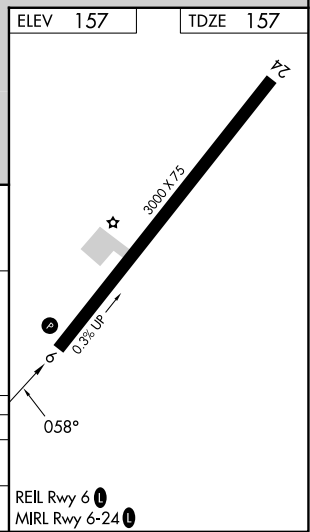
BIDDEFORD MUNI (B19)

RNP APCH.	MISSED APPROACH: Climbing left turn to 3000 direct ENE VOR/DME and hold, continue climb-in-hold to 3000.
⚠️ Rwy 6 helicopter visibility reduction below 3/4 SM NA. Obtain local altimeter setting on CTAF; when not received use Sanford altimeter setting and increase all MDA 40 feet and LNAV visibility Cat C 1/8 SM, and Circling visibility Cat C 1/4 SM. VDP NA when using Sanford altimeter setting. Circling Rwy 24 NA at night.	

PORTLAND APP CON ★ 119.75 269.35	UNICOM 123.0 (CTAF) 1
--	---------------------------------



Procedure NA for arrivals at ARMIE on V167 southbound.



4 NM Holding Pattern	DEXXY	VGSI and descent angles not coincident (VGSI Angle 3.50/TCH 31).	3000	ENE
6000 ← 238°		SWLCH		
2300 → 058°		1300	1.4 NM to RWY6	
			3.03° TCH 31	
			1.4 NM	

CATEGORY	A	B	C	D
LNAV MDA	680-1	523 (600-1)	680-1½ 523 (600-1½)	NA
CIRCLING	780-1	623 (700-1)	800-1¾ 643 (700-1¾)	NA

NE-1, 26 DEC 2024 to 23 JAN 2025

NE-1, 26 DEC 2024 to 23 JAN 2025