

VORTAC ENE <b>117.1</b> Chan <b>118</b>	APP CRS <b>088°</b>	Rwy Idg TDZE Apt Elev	<b>3000</b> <b>157</b> <b>157</b>
---	------------------------	-----------------------------	---

# VOR RWY 6

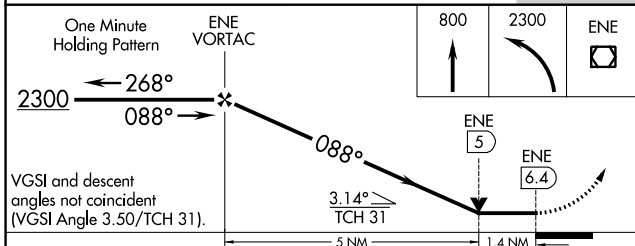
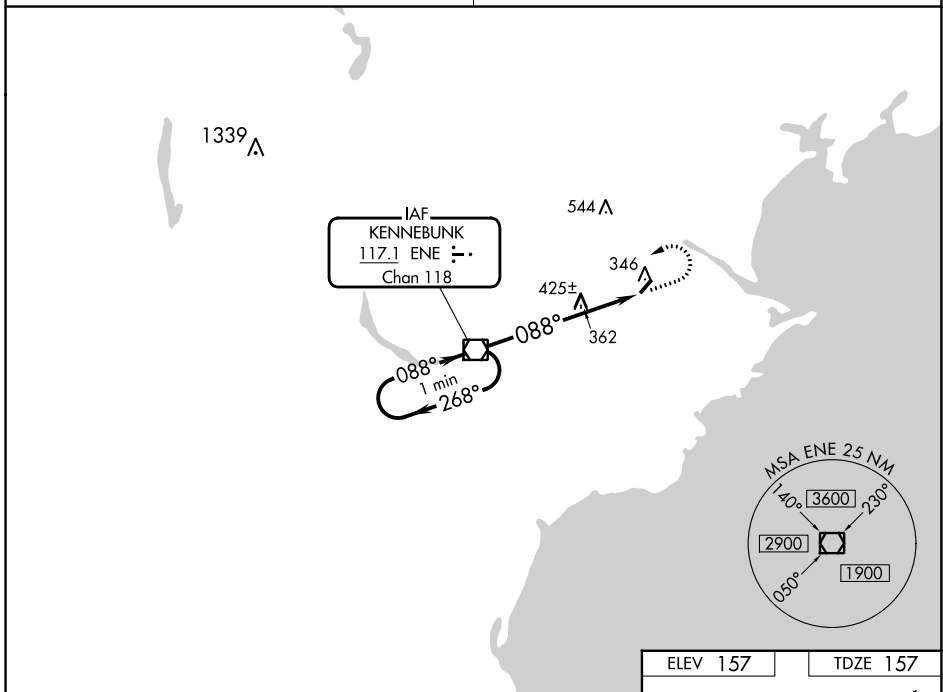
BIDDEFORD MUNI (B19)

**NA** Obtain local altimeter on CTAF; when not received, use Sanford altimeter setting.  
VDP NA when using Sanford altimeter setting. Circling Rwy 24 NA at night.  
Rwy 6 helicopter visibility reduction below 3/4 SM NA.

MISSED APPROACH: Climb to 800, then climbing left turn to 2300 direct ENE VOR/DME and hold.

PORTLAND APP CON ★  
**119.75 269.35**

UNICOM  
**123.0 (CTAF) 0**



CATEGORY	A	B	C	D
S-6	700-1	543 (600-1)	700-1 <sup>5</sup> / <sub>8</sub> 543 (600-1 <sup>5</sup> / <sub>8</sub> )	NA
CIRCLING	700-1 543 (600-1)	720-1 563 (600-1)	800-1 <sup>3</sup> / <sub>4</sub> 643 (700-1 <sup>3</sup> / <sub>4</sub> )	NA
SANFORD ALTIMETER SETTING MINIMUMS				
S-6	740-1	583 (600-1)	740-1 <sup>3</sup> / <sub>4</sub> 583 (600-1 <sup>3</sup> / <sub>4</sub> )	NA
CIRCLING	740-1 583 (600-1)	760-1 603 (700-1)	840-2 683 (700-2)	NA

ELEV 157	TDZE 157
REIL Rwy 6 0 MIRL Rwy 6-24 0	
FAF to MAP 6.4 NM	
Knots	60 90 120 150 180
Min:Sec	6:24 4:16 3:12 2:34 2:08

NE-1, 26 DEC 2024 to 23 JAN 2025

NE-1, 26 DEC 2024 to 23 JAN 2025