

WAAS CH 50232 W13A	APP CRS 125°	Rwy Idg 5152 TDZE 358 Apt Elev 358
--	------------------------	---

RNAV (GPS) RWY 13

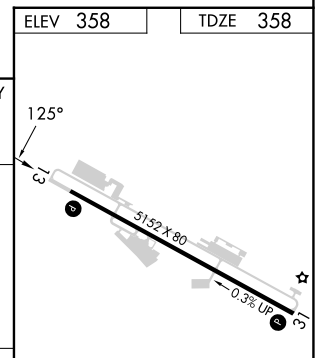
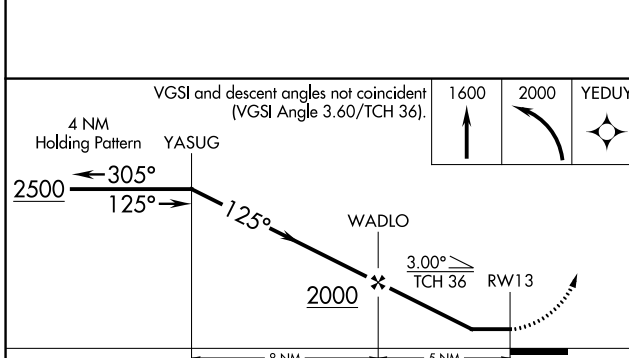
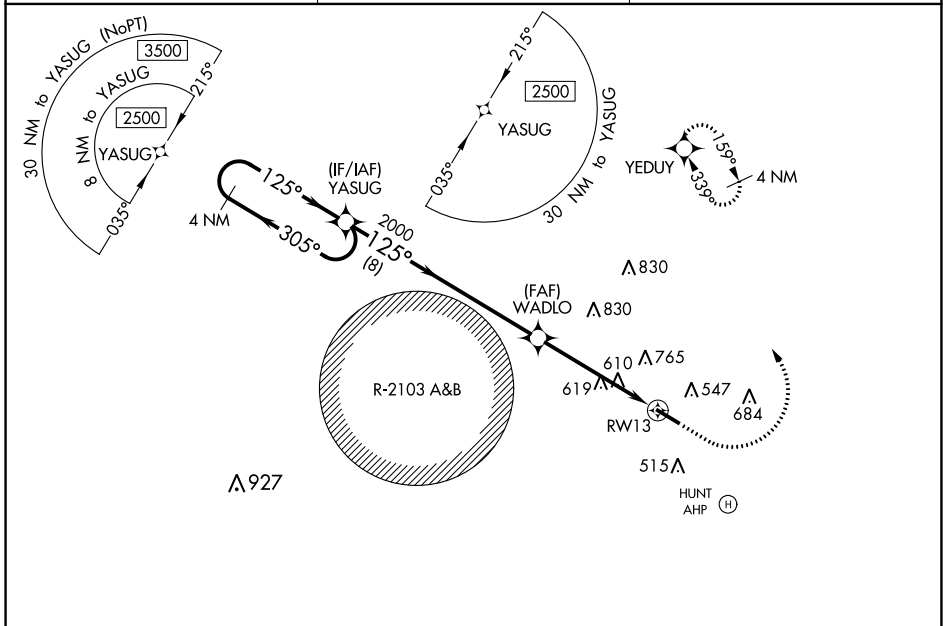
OZARK/BLACKWELL FLD (71J)

RNP APCH.

Use Dothan altimeter setting; when not received, use Cairns AAF (Fort Novosel) altimeter setting. Procedure NA at night. Rwy 13 helicopter visibility reduction below 1 SM NA.

MISSED APPROACH: Climb to 1600 then climbing left turn to 2000 direct YEDUY and hold.

DHN ASOS 135.725	CAIRNS APP CON ★ 125.4 327.125	UNICOM 122.7 (CTAF) 0
----------------------------	--	---------------------------------



CATEGORY	A		B		C		D	
	900-1	542 (600-1)	602 (700-1)	742 (800-1¾)	900-1 5/8	542 (600-1 5/8)	960-1 3/4	602 (700-1 3/4)
LP MDA	900-1	542 (600-1)	602 (700-1)	742 (800-1¾)	900-1 5/8	542 (600-1 5/8)	960-1 3/4	602 (700-1 3/4)
LP MDA	960-1	602 (700-1)	742 (800-1¾)	900-1 5/8	960-1 3/4	602 (700-1 3/4)	960-1 3/4	602 (700-1 3/4)
CIRCLING	960-1 602 (700-1)	1100-1 3/4 742 (800-1¾)	1100-1 3/4 742 (800-1¾)	1100-2 1/4 742 (800-2 1/4)	NA	NA	NA	NA

ELEV 358 TDZE 358

REIL Rws 13 and 31 0
MIRL Rwy 13-31 0

SE-4, 26 DEC 2024 to 23 JAN 2025

SE-4, 26 DEC 2024 to 23 JAN 2025