

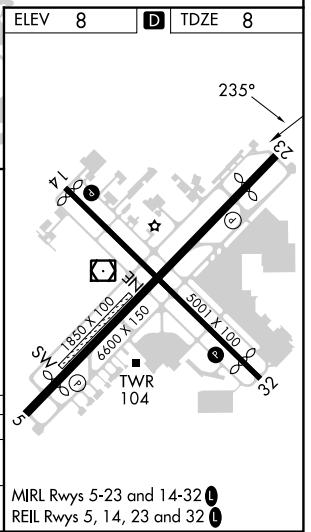
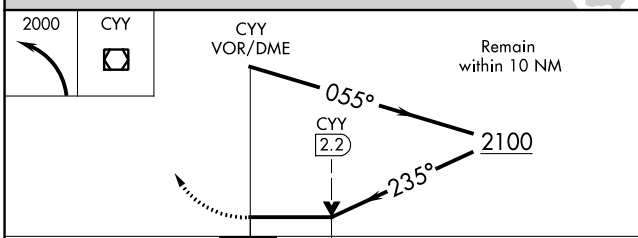
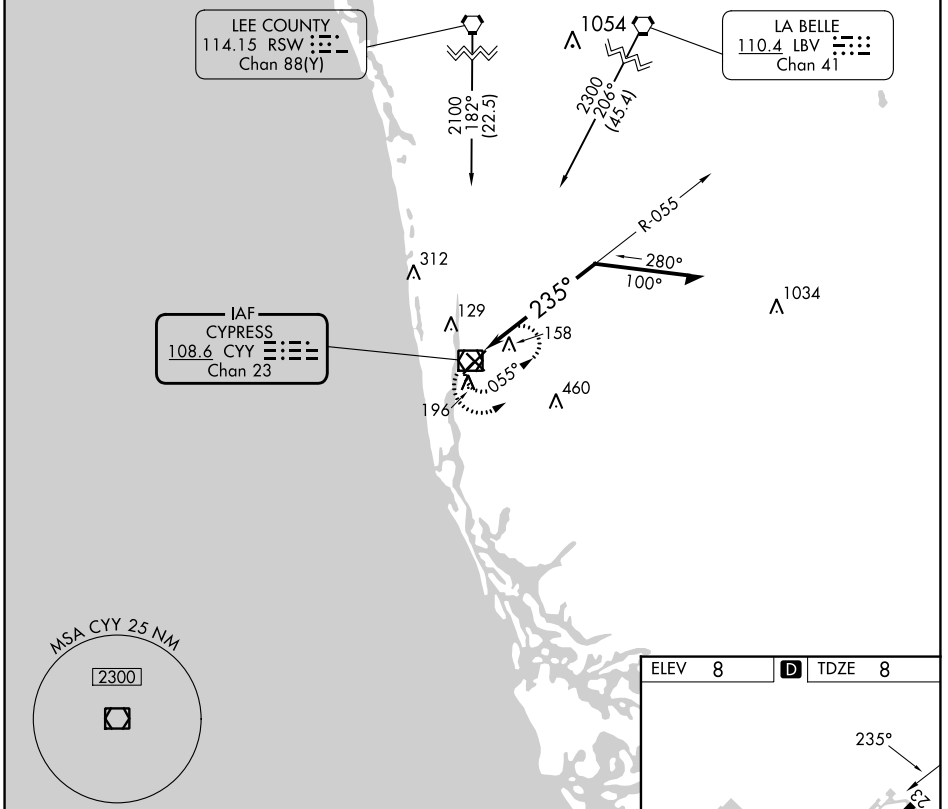
VOR/DME	CYY	APP CRS	Rwy Idg	5000
108.6		235°	TDZE	8
Chan 23			Apt Elev	8

VOR RWY 23

NAPLES MUNI (APF)

Helicopter visibility reduction below 3/4 SM NA. MISSED APPROACH: Climbing left turn to 2000 in CYY VOR/DME holding pattern.

ATIS 134.225	FORT MYERS APP CON* 124.125 371.85	NAPLES TOWER* 128.5 (CTAF)	GND CON 121.6	CLNC DEL 118.0	CLNC DEL 124.125 (When twr closed)
------------------------	--	--------------------------------------	-------------------------	--------------------------	---



CATEGORY	A	B	C	D
S-23	600-1	592 (600-1)	600-1½ 592 (600-1½)	600-1¾ 592 (600-1¾)
CIRCLING	600-1	592 (600-1)	680-2 672 (700-2)	820-2¾ 812 (900-2¾)

MIRL Rwy 5-23 and 14-32
REIL Rwy 5, 14, 23 and 32

SE-3, 26 DEC 2024 to 23 JAN 2025

SE-3, 26 DEC 2024 to 23 JAN 2025