

NAPLES, FLORIDA

AL-6020 (FAA)

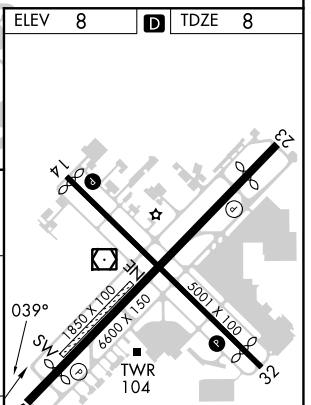
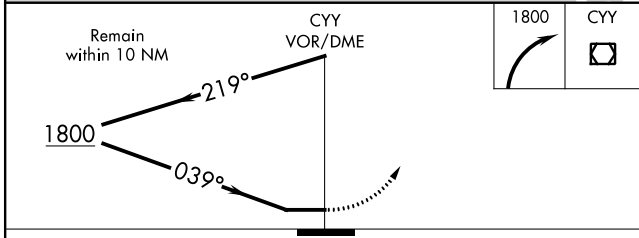
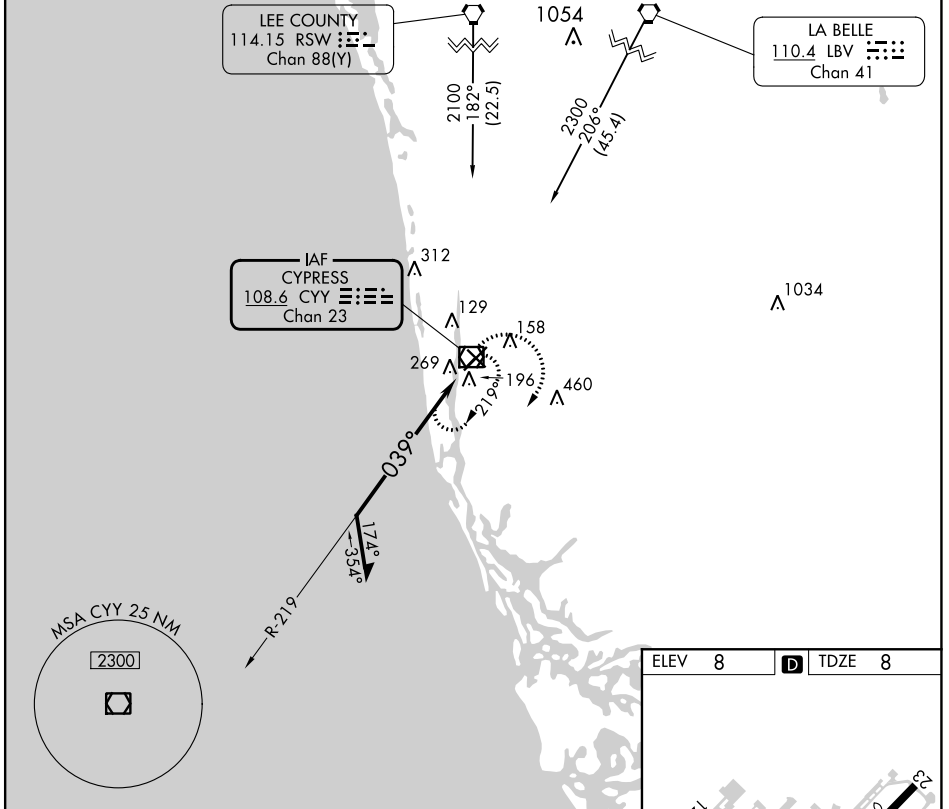
24249

VOR/DME CYY <b>108.6</b> Chan 23	APP CRS <b>039°</b>	Rwy Ldg TDZE 5000 8 Apt Elev 8
----------------------------------------	------------------------	--------------------------------------------

# VOR RWY 5

NAPLES MUNI (APF)

		MISSED APPROACH: Climbing right turn to 1800 in CYY VOR/DME holding pattern.			
ATIS <b>134.225</b>	FORT MYERS APP CON* <b>124.125 371.85</b>	NAPLES TOWER* <b>128.5 (CTAF) 0</b>	GND CON <b>121.6</b>	CLNC DEL <b>118.0</b>	CLNC DEL <b>124.125</b> (When twr closed)



CATEGORY	A	B	C	D
S-5	580-1	572 (600-1)	580-1 $\frac{5}{8}$	572 (600-1 $\frac{5}{8}$ )
CIRCLING	580-1	572 (600-1)	680-2 672 (700-2)	820-2 $\frac{3}{4}$ 812 (900-2 $\frac{3}{4}$ )

MIRL Rwy 5-23 and 14-32  
 REIL Rwy 5, 14, 23 and 32

NAPLES, FLORIDA  
 Amdt 5C 25FEB21

26°09'N-81°47'W

# NAPLES MUNI (APF) VOR RWY 5

SE-3, 26 DEC 2024 to 23 JAN 2025

SE-3, 26 DEC 2024 to 23 JAN 2025