

APP CRS	Rwy Idg	<b>4887</b>
<b>175°</b>	TDZE	<b>707</b>
	Apt Elev	<b>719</b>

# RNAV (GPS) RWY 17

BOYNE MOUNTAIN (BFA)

RNP APCH - GPS.

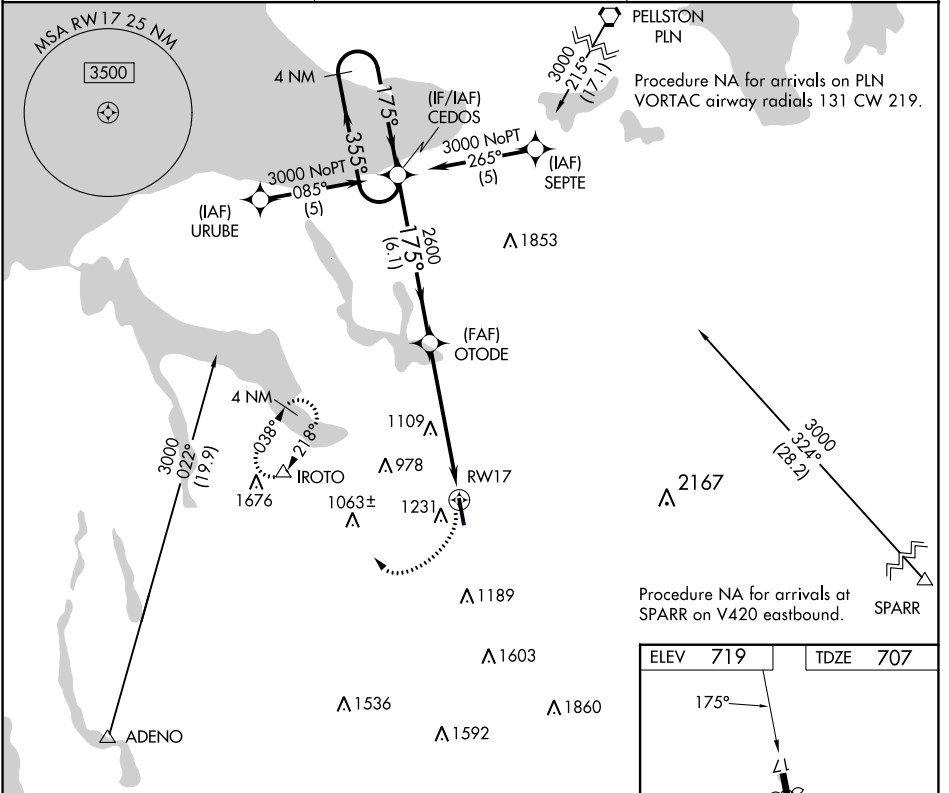
**NA** Circling NA west of Rwy 17-35. Rwy 17 helicopter visibility reduction below 1 SM NA. Procedure NA at night. When local altimeter setting not received, use Belleaire altimeter setting. VDP NA when using Belleaire altimeter setting.

**MISSED APPROACH:**  
Climbing right turn to 3000 direct IROTO and hold.

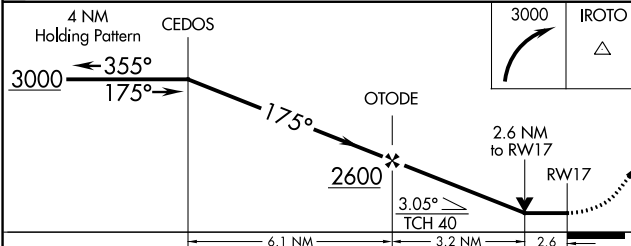
AWOS-3PT  
**118.675**

MINNEAPOLIS CENTER  
**134.6 354.05**

UNICOM  
**122.8 (CTAF) 0**



ELEV	<b>719</b>	TDZE	<b>707</b>
------	------------	------	------------



CATEGORY	A	B	C	D
LNVA MDA	1580 - 1 873 (900-1)	1580 - 1¼ 873 (900-1¼)	1580 - 2½ 873 (900-2½)	1580 - 2¾ 873 (900-2¾)
CIRCLING	1580 - 1¼ 861 (900-1¼)		1760 - 3 1041 (1100-3)	1880 - 3 1161 (1200-3)

REIL Rwy 17 and 35 **0**  
MIRL Rwy 17-35 **0**

EC-1, 26 DEC 2024 to 23 JAN 2025

EC-1, 26 DEC 2024 to 23 JAN 2025