

| | | | |
|--|------------------------|-----------------------------|---|
| WAAS CH 77815 W11A | APP CRS 103° | Rwy Idg TDZE Apt Elev | 5500 107 107 |
|--|------------------------|-----------------------------|---|

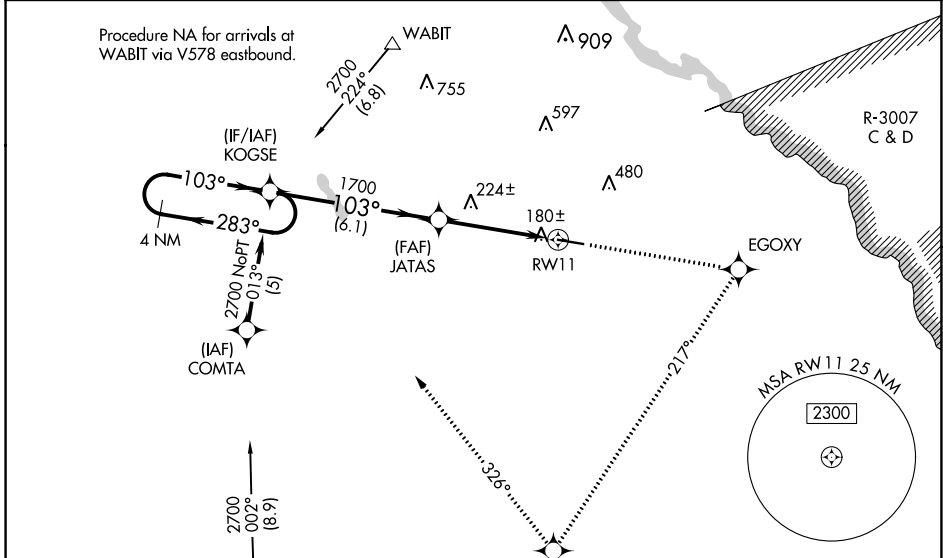
RNAV (GPS) RWY 11

JESUP-WAYNE COUNTY (JES)

NA Baro-VNAV NA when using Savannah/Hilton Head Intl altimeter setting. For uncompensated Baro-VNAV systems, LNAV/VNAV NA below -1 5°C (5°F) or above 54°C (130°F). DME/DME RNP-0.3 NA. Helicopter visibility reduction below 1 statute mile NA. When local altimeter setting not received, use Savannah/Hilton Head Intl altimeter setting: increase LPV DA to 583, LNAV/VNAV DA to 597, and visibility LPV all Cats ½ SM and LNAV/VNAV all Cats ¼ SM; increase all MDAs 140 feet and visibility LNAV Cat C and Circling Cat C ½ SM. VDP NA when using Savannah/Hilton Head Intl altimeter setting.

MISSED APPROACH: Climb to 2700 direct EGOXY and right turn via track 217° to FEJYY and right turn via track 326° to KOGSE and hold.

| | | |
|----------------------------|--|-------------------------------|
| AWOS-3PT 118.125 | JACKSONVILLE CENTER 126.75 277.4 | UNICOM 122.8 (CTAF) |
|----------------------------|--|-------------------------------|

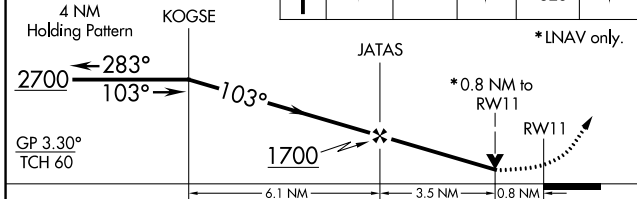


Procedure NA for arrivals at HABLE via V267 southeast bound.

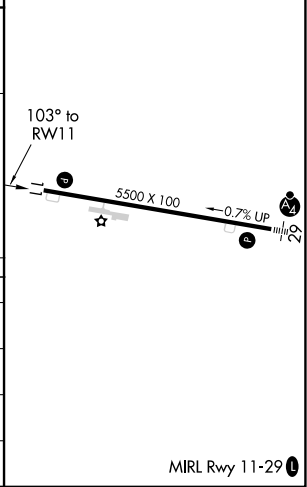
| | |
|----------|----------|
| ELEV 107 | TDZE 107 |
|----------|----------|

VGSI and RNAV glidepath not coincident (VGSI Angle 3.75/TCH 47).

| | | | |
|------|---------|---------|-------|
| 2700 | EGOXY | FEJYY | KOGSE |
| ↑ | tr 217° | tr 326° | |



| CATEGORY | A | B | C | D |
|--------------|----------------------|----------------------|----------------------|----|
| LPV DA | 462-1 | 355 (400-1) | | NA |
| LNAV/VNAV DA | 476-1¼ | 369 (400-1¼) | | NA |
| LNAV MDA | 480-1 | 373 (400-1) | | NA |
| CIRCLING | 520-1 413 (500-1) | 560-1 453 (500-1) | 780-2 673 (700-2) | NA |



SE-4, 26 DEC 2024 to 23 JAN 2025

SE-4, 26 DEC 2024 to 23 JAN 2025