

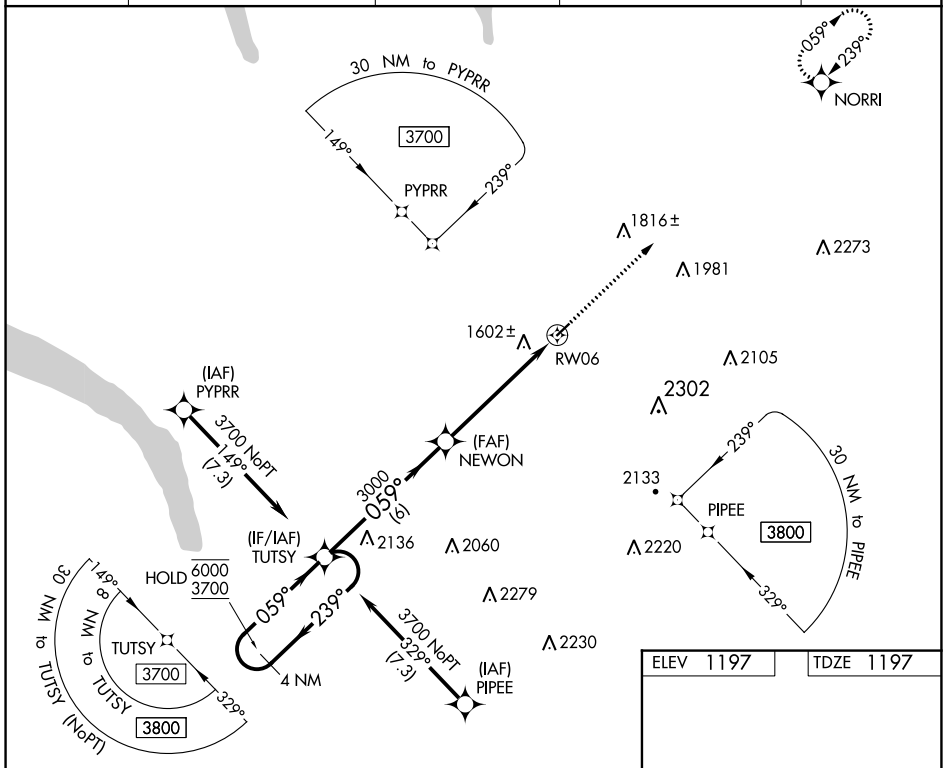
# RNAV (GPS) RWY 6

CORTLAND COUNTY/CHASE FLD (N03)

APP CRS	Rwy Idg	<b>3401</b>
<b>059°</b>	TDZE	<b>1197</b>
	Apt Elev	<b>1197</b>

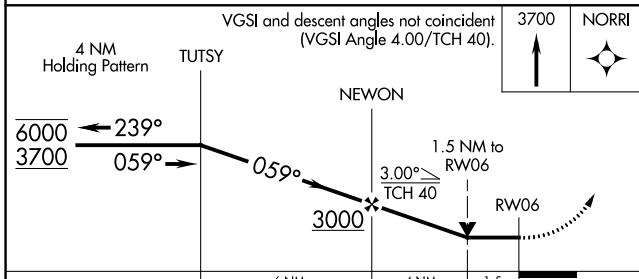
RNP APCH.	MISSED APPROACH: Climb to 3700 direct NORRI and hold.
	Rwy 6 helicopter visibility reduction below 3/4 SM NA.

AWOS-3 <b>132.225</b>	BINGHAMTON APP CON ★ <b>118.6 257.625 (S-SE)</b>	ELMIRA APP CON ★ <b>124.3 257.8 (W)</b>	SYRACUSE APP CON <b>126.125 269.125 (N)</b>	UNICOM <b>122.8 (CTAF)</b>
--------------------------	---	--	--	-------------------------------

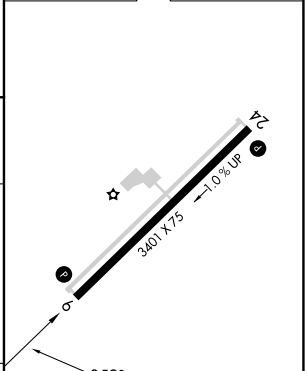


NE-2, 26 DEC 2024 to 23 JAN 2025

NE-2, 26 DEC 2024 to 23 JAN 2025



ELEV 1197	TDZE 1197
-----------	-----------



CATEGORY	A	B	C	D
LNVA MDA	1860-1	663 (700-1)	1860-1 7/8 663 (700-1 7/8)	NA
CIRCLING	1940-1 743 (800-1)	1980-1 783 (800-1)	2240-3 1043 (1100-3)	NA

REIL Rwy 24

MRL Rwy 6-24