

WAAS CH <b>73046</b> <b>W35A</b>	APP CRS <b>347°</b>	Rwy Idg TDZE <b>70</b> Apt Elev <b>70</b>	<b>3176</b>
--	------------------------	---	-------------

# RNAV (GPS) RWY 35

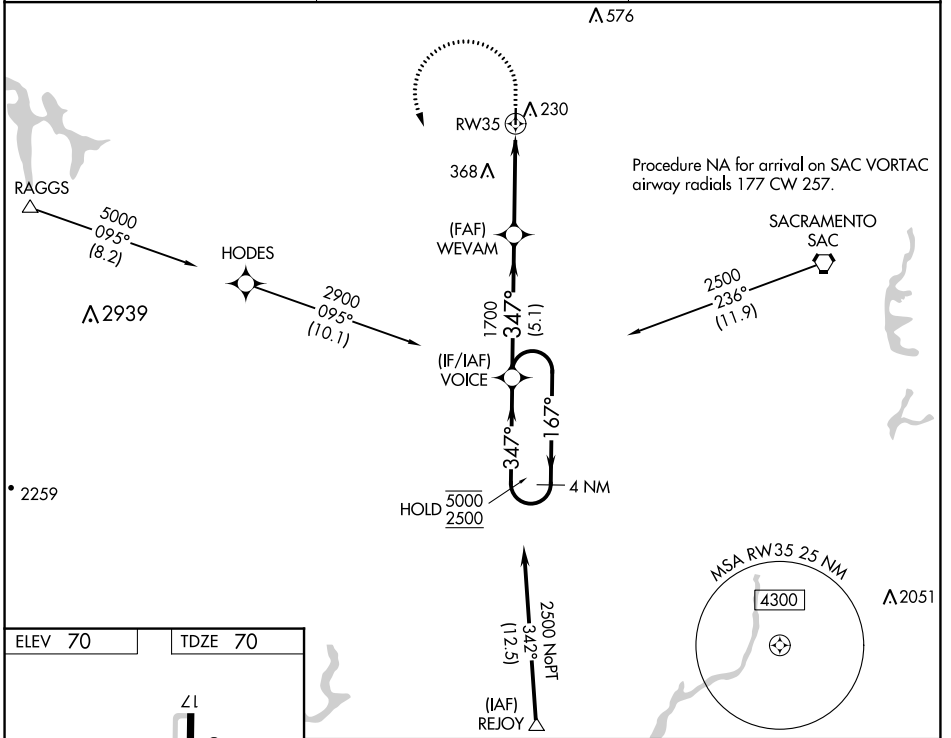
UNIVERSITY (EDU)

RNP APCH - GPS.

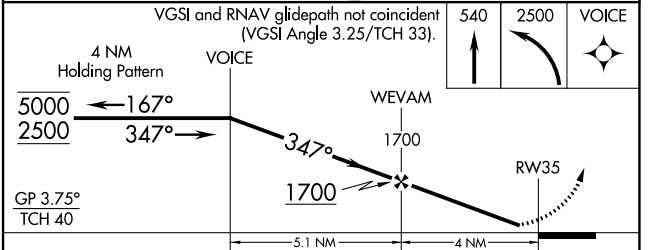
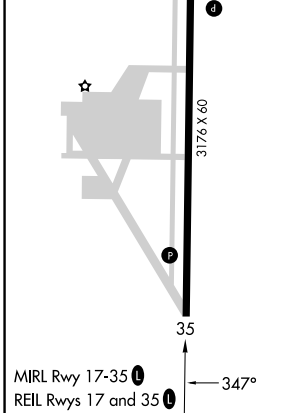
▼ For uncompensated Baro-VNAV systems, LNAV/VNAV NA below -15°C or above 54°C. Procedure NA at night. Rwy 35 helicopter visibility reduction below 1 SM NA.

▲ MISSED APPROACH: Climb to 540, then climbing left turn to 2500 direct VOICE and hold, continue climb-in-hold to 2500.

AWOS-3 <b>119.025</b>	TRAVIS APP CON <b>126.6 281.45</b>	UNICOM <b>123.075 (CTAF) 0</b>
--------------------------	---------------------------------------	-----------------------------------



ELEV 70	TDZE 70
---------	---------



CATEGORY	A	B	C	D
LPV DA	355-1	285 (300-1)	NA	
LNAV/VNAV DA	376-1	306 (400-1)	NA	
LNAV MDA	520-1	450 (500-1)	NA	

SW-2, 26 DEC 2024 to 23 JAN 2025

SW-2, 26 DEC 2024 to 23 JAN 2025