

(BLTWY7.BLTWY) 21280

AL-6032 (FAA)

WHARTON RGNL (A.R.M)

BLTWY SEVEN DEPARTURE (RNAV)

WHARTON, TEXAS

CTAF
122.7
HOUSTON DEP CON
128.6 360.85

**TOP ALTITUDE:
ASSIGNED BY ATC**

NOTE: RADAR required.
NOTE: DME/DME/IRU or GPS required.
NOTE: RNAV 1.

TAKEOFF MINIMUMS

Rwy 14, 32: Standard with minimum
climb of 500' per NM to 600.

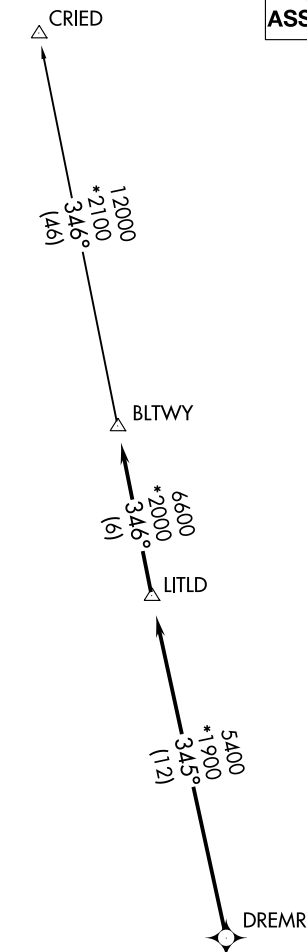
▼ DEPARTURE ROUTE DESCRIPTION

TAKEOFF RUNWAY 14: Climb on heading
148° or as assigned by ATC for RADAR
vectors to DREMR, thence

TAKEOFF RUNWAY 32: Climb on heading
328° or as assigned by ATC for RADAR
vectors to DREMR, thence

...on track 345° to LITLD, then on track 346°
to BLTWY, then on (transition). Maintain ATC
assigned altitude. Expect filed altitude 10
minutes after departure.

CRIED TRANSITION (BLTWY7.CRIED)



SC-5, 26 DEC 2024 to 23 JAN 2025

SC-5, 26 DEC 2024 to 23 JAN 2025

BLTWY SEVEN DEPARTURE (RNAV)

(BLTWY7.BLTWY) 07OCT21

WHARTON, TEXAS

WHARTON RGNL (A.R.M)