

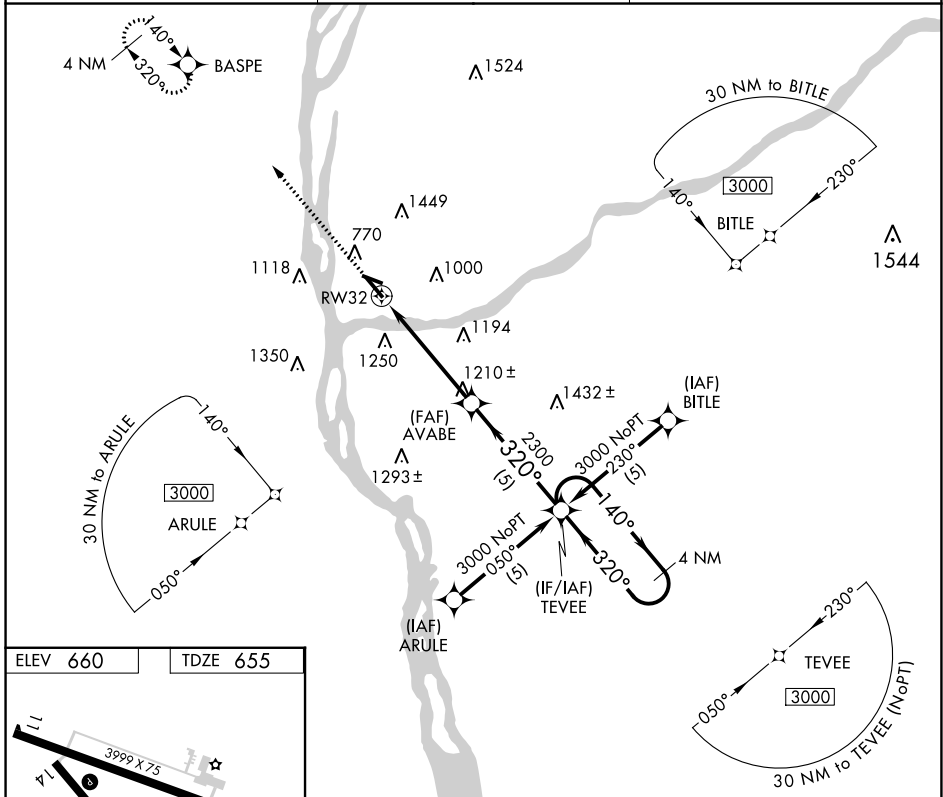
APP CRS 320°	Rwy Idg 5000
	TDZE 655
	Apt Elev 660

RNAV (GPS) RWY 32

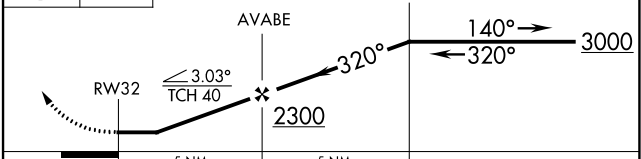
PRAIRIE DU CHIEN MUNI (PDC)

<p>▽ DME/DME RNP-0.3 NA. ▲ Night landing: Rwy 11, 32 NA. Helicopter visibility reduction below 1 SM NA.</p>	MISSED APPROACH: Climb to 3000 direct BASPE and hold.
---	---

AWOS-3 119.925	CHICAGO CENTER 133.95 281.4	UNICOM 122.8 (CTAF) 0
--------------------------	---------------------------------------	---------------------------------



3000	BASPE	VGSI and descent angles not coincident (VGSI Angle 4.00/TCH 40).	4 NM Holding Pattern
------	-------	--	----------------------



EC-3, 26 DEC 2024 to 23 JAN 2025

EC-3, 26 DEC 2024 to 23 JAN 2025