

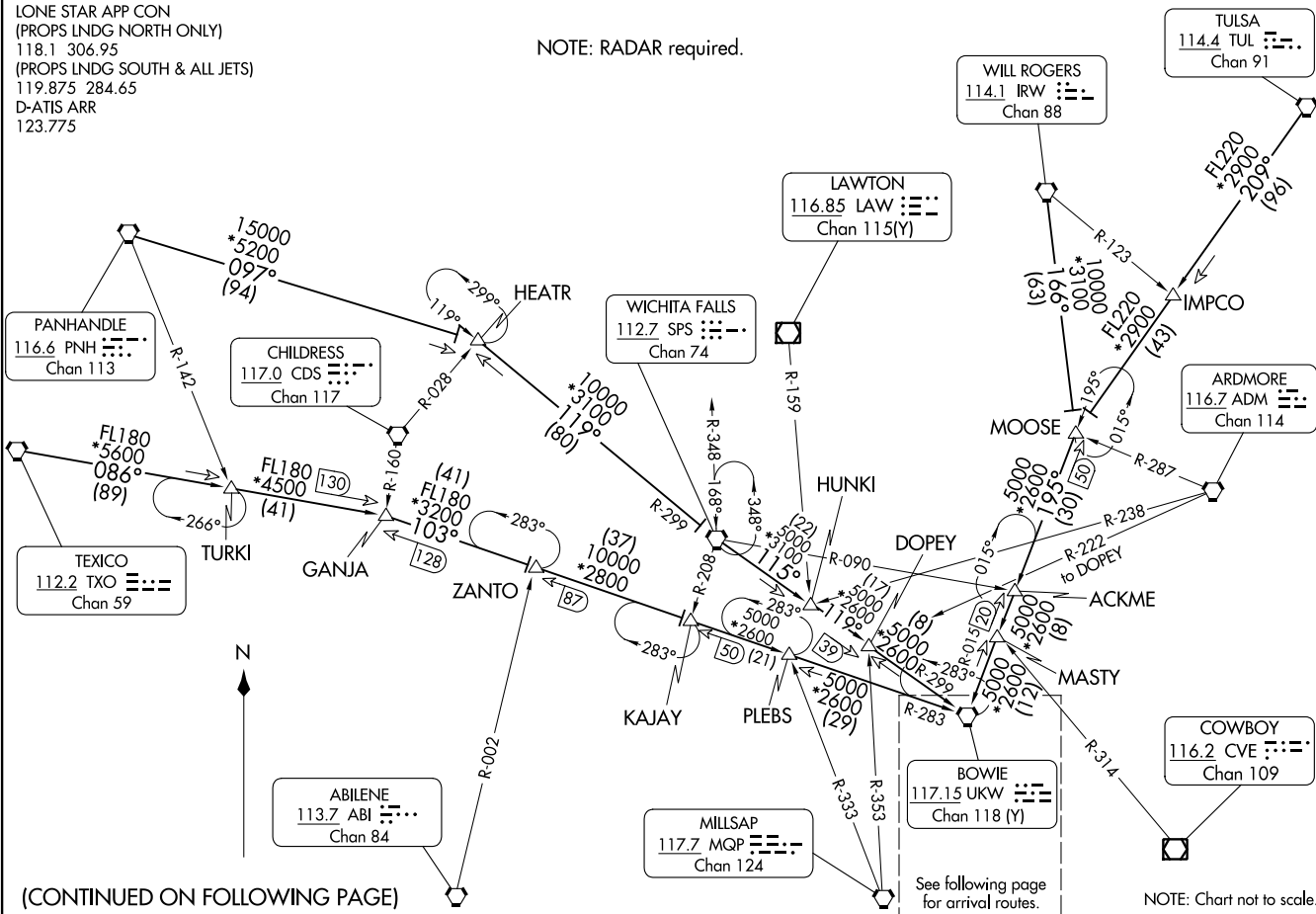
BOWIE EIGHT ARRIVAL  
(UKW, UKW8) 11 JUL 24

Transition Routes

DALLAS-FORT WORTH, TEXAS  
DALLAS-FORT WORTH INTL (DFW)

LONE STAR APP CON  
(PROPS LNDG NORTH ONLY)  
118.1 306.95  
(PROPS LNDG SOUTH & ALL JETS)  
119.875 284.65  
D-ATIS ARR  
123.775

NOTE: RADAR required.



(CONTINUED ON FOLLOWING PAGE)

See following page for arrival routes.

NOTE: Chart not to scale.

(UKW, UKW8) 24305

Transition Routes

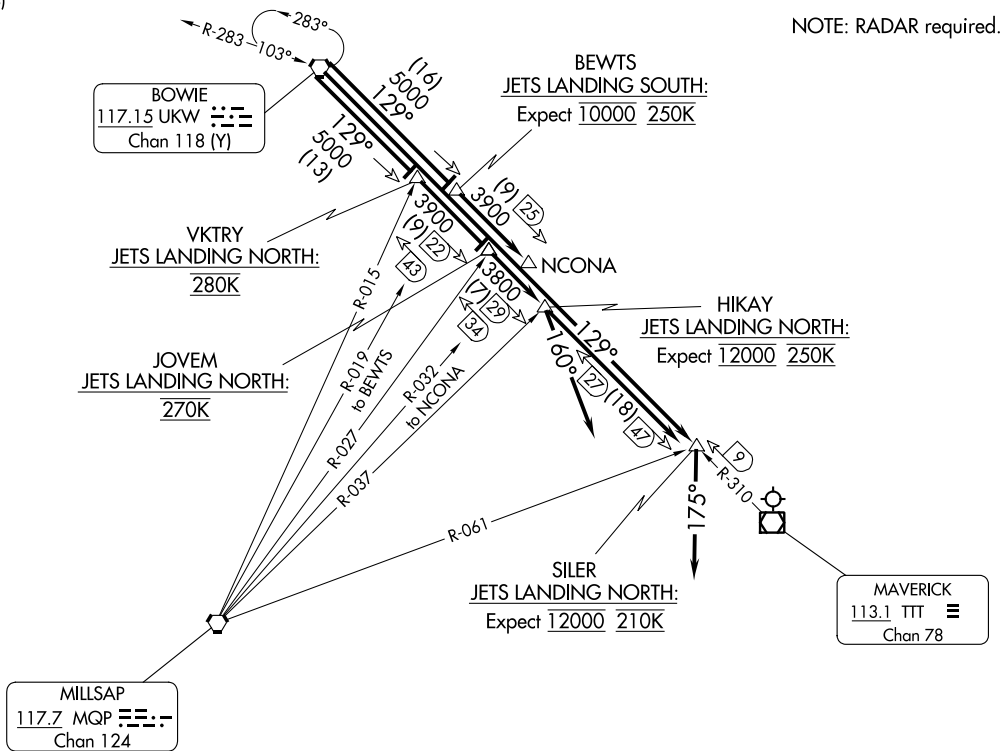
DALLAS-FORT WORTH INTL (DFW)  
DALLAS-FORT WORTH, TEXAS

**BOWIE EIGHT ARRIVAL**  
(UKW, UKW8) 11 JUL 24

Arrival Routes

DALLAS-FORT WORTH, TEXAS  
DALLAS-FORT WORTH INTL (DFW)

LONE STAR APP CON  
(PROPS LNDG NORTH ONLY)  
118.1 306.95  
(PROPS LNDG SOUTH & ALL JETS)  
119.875 284.65  
D-ATIS ARR  
123.775



NOTE: RADAR required.

(CONTINUED ON FOLLOWING PAGE)

NOTE: Chart not to scale.

**BOWIE EIGHT ARRIVAL**  
(UKW, UKW8) 24305

Arrival Routes

DALLAS-FORT WORTH INTL (DFW)  
DALLAS-FORT WORTH, TEXAS  
AL-6039 (FAA)

# BOWIE EIGHT ARRIVAL

## ARRIVAL ROUTE DESCRIPTION

PANHANDLE TRANSITION (PNH.UKW8): From over PNH VORTAC on PNH R-097 to HEATR, then on SPS R-299 to SPS VORTAC, then on SPS R-115 to HUNKI, then on UKW R-299 to UKW VORTAC. Thence. . . .

TEXICO TRANSITION (TXO.UKW8): From over TXO VORTAC on TXO R-086 to GANJA, then on UKW R-283 to UKW VORTAC. Thence. . . .

TULSA TRANSITION (TUL.UKW8): From over TUL VORTAC on TUL R-209 to MOOSE, then on UKW R-015 to UKW VORTAC. Thence. . . .

TURKI TRANSITION (TURKI.UKW8): From over TURKI on TXO R-086 to GANJA, then on UKW R-283 to UKW VORTAC. Thence. . . .

WICHITA FALLS TRANSITION (SPS.UKW8): From over SPS VORTAC on SPS R-115 to HUNKI, then on UKW R-299 to UKW VORTAC. Thence. . . .

WILL ROGERS TRANSITION (IRW.UKW8): From over IRW VORTAC on IRW R-166 to MOOSE, then on UKW R-015 to UKW VORTAC. Thence. . . .

. . . . ALL AIRCRAFT: From over UKW on UKW R-129 and TTT R-310. Thence. . . .

. . . . JETS LANDING SOUTH: UKW to BEWTS, to NCONA, expect RADAR vectors to final approach course.

. . . . JETS LANDING NORTH: UKW to VKTRY, to JOVEM, to HIKAY, to SILER depart heading 175°, expect RADAR vectors to final approach course.

. . . . PROPS LANDING SOUTH: UKW to VKTRY, to JOVEM, to HIKAY, expect RADAR vectors to final approach course.

. . . . PROPS LANDING NORTH: UKW to VKTRY, to JOVEM, to HIKAY depart heading 160°, expect RADAR vectors to final approach course.

SC-2, 26 DEC 2024 to 23 JAN 2025

SC-2, 26 DEC 2024 to 23 JAN 2025