

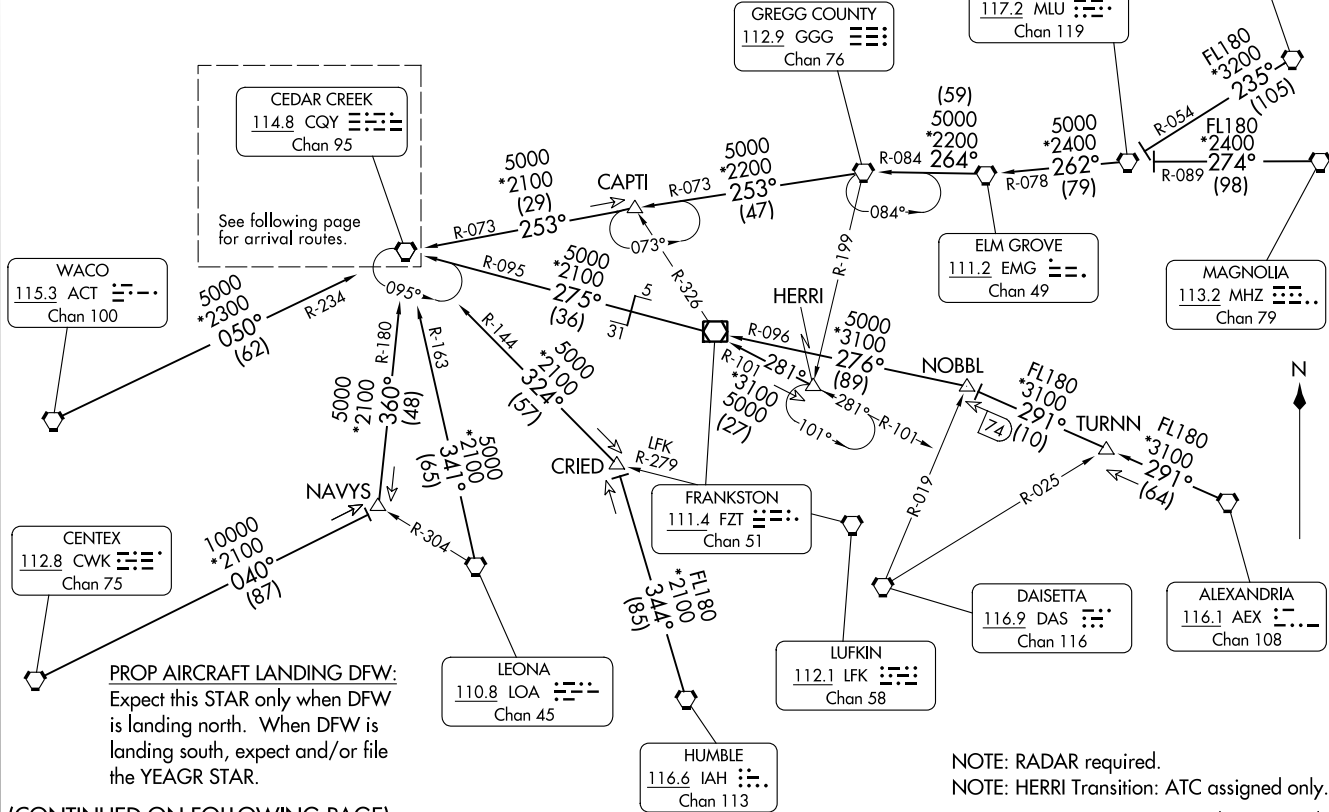
CEDAR CREEK THREE ARRIVAL Transition Routes

AL-6039 (FAA)

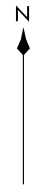
DALLAS-FORT WORTH, TEXAS

LONE STAR APP CON
125.025 133.525 263.025
D-ATIS ARR
123.775

CEDAR CREEK THREE ARRIVAL Transition Routes

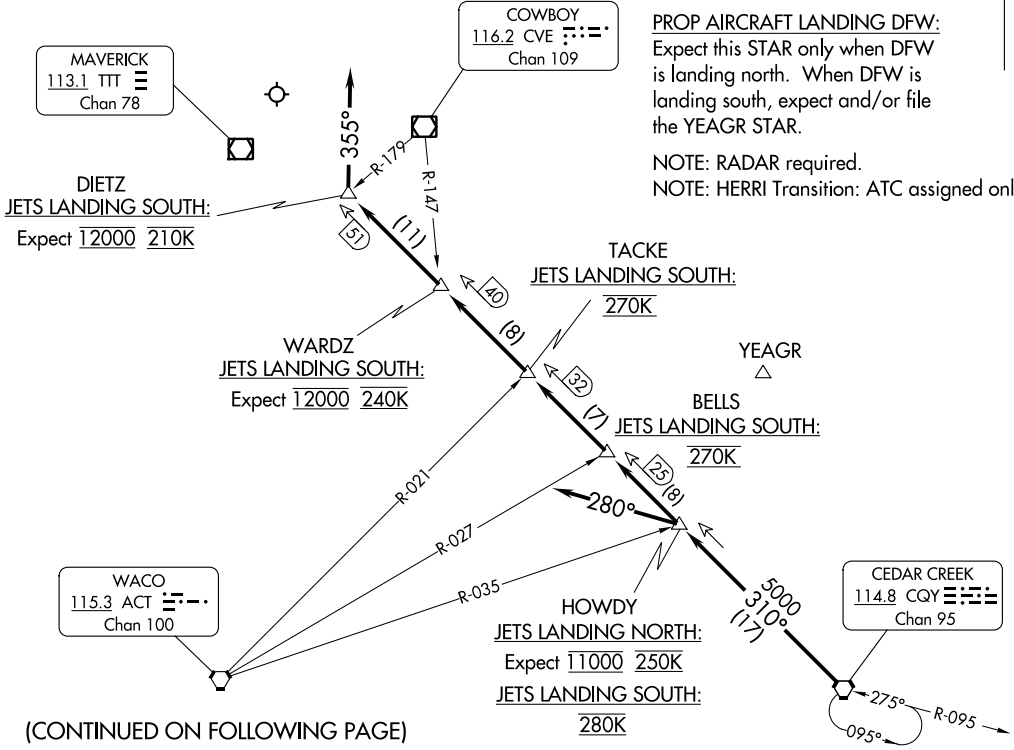


(CONTINUED ON FOLLOWING PAGE)



PROP AIRCRAFT LANDING DFW:
Expect this STAR only when DFW is landing north. When DFW is landing south, expect and/or file the YEAGR STAR.

NOTE: RADAR required.
NOTE: HERRI Transition: ATC assigned only.



(CONTINUED ON FOLLOWING PAGE)

LONE STAR APP CON
125.025 133.525 263.025
D-ATIS ARR
123.775

CEDAR CREEK THREE ARRIVAL

ARRIVAL ROUTE DESCRIPTION

ALEXANDRIA TRANSITION (AEX.CQY3): From over AEX VORTAC on AEX R-291 to NOBBL, then on FZT R-096 to FZT VOR/DME, then on FZT R-275 and CQY R-095 to CQY VORTAC. Thence. . .

CENTEX TRANSITION (CWK.CQY3): From over CWK VORTAC on CKW R-040 to NAVYS, then on CQY R-180 to CQY VORTAC. Thence. . .

ELM GROVE TRANSITION (EMG.CQY3): From over EMG VORTAC on EMG R-264 and GGG R-084 to GGG VORTAC, then on GGG R-253 and CQY R-073 to CAPTI, then on CQY R-073 to CQY VORTAC. Thence. . .

GREGG COUNTY TRANSITION (GGG.CQY3): From over GGG VORTAC on GGG R-253 and CQY R-073 to CAPTI, then on CQY R-073 to CQY VORTAC. Thence. . .

HERRI TRANSITION (HERRI.CQY3): From over HERRI on FZT R-101 to FZT VOR/DME, then on FZT R-275 and CQY R-095 to CQY VORTAC. Thence. . .

HUMBLE TRANSITION (IAH.CQY3): From over IAH VORTAC on IAH R-344 to CRIED, then on CQY R-144 to CQY VORTAC. Thence. . .

LEONA TRANSITION (LOA.CQY3): From over LOA VORTAC on LOA R-341 and CQY R-163 to CQY VORTAC. Thence. . .

MAGNOLIA TRANSITION (MHZ.CQY3): From over MHZ VORTAC on MHZ R-274 and MLU R-089 to MLU VORTAC, then on MLU R-262 and EMG R-078 to EMG VORTAC, then on EMG R-264 and GGG R-084 to GGG VORTAC, then on GGG R-253 and CQY R-073 to CAPTI, then on CQY R-073 to CQY VORTAC. Thence. . .

MONROE TRANSITION (MLU.CQY3): From over MLU VORTAC on MLU R-262 and EMG R-078 to EMG VORTAC, then on EMG R-264 and GGG R-084 to GGG VORTAC, then on GGG R-253 and CQY R-073 to CAPTI, then on CQY R-073 to CQY VORTAC. Thence. . .

NAVYS TRANSITION (NAVYS.CQY3): From over NAVYS on CQY R-180 to CQY VORTAC. Thence. . .

SIDON TRANSITION (SQS.CQY3): From over SQS VORTAC on SQS R-235 and MLU R-054 to MLU VORTAC, then on MLU R-262 and EMG R-078 to EMG VORTAC, then on EMG R-264 and GGG R-084 to GGG VORTAC, then on GGG R-253 and CQY R-073 to CAPTI, then on CQY R-073 to CQY VORTAC. Thence. . .

WACO TRANSITION (ACT.CQY3): From over ACT VORTAC on ACT R-050 and CQY R-234 to CQY VORTAC. Thence. . .

From over CQY VORTAC on CQY R-310. Thence. . .

. . . JETS LANDING NORTH: To HOWDY. Depart heading 280°, expect RADAR vectors to final.

. . . JETS LANDING SOUTH: To DIETZ. Depart heading 355°, expect RADAR vectors to final.

. . . PROP AIRCRAFT LANDING NORTH: To TACKE. Expect vectors to final approach course.

SC-2, 26 DEC 2024 to 23 JAN 2025

SC-2, 26 DEC 2024 to 23 JAN 2025