

LOC/DME I-PKQ 110.3 Chan 40	APP CRS 356°	Rwy Idg TDZE Apt Elev	13400 563 607
--	------------------------	-----------------------------	--

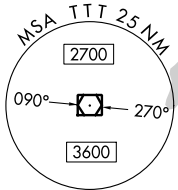
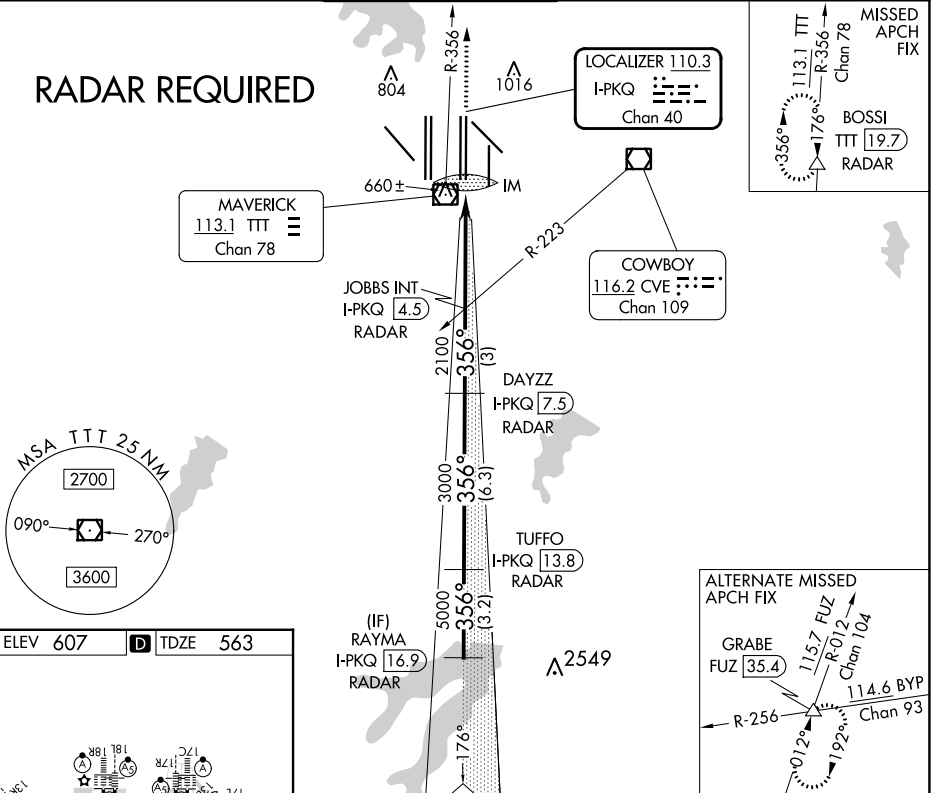
CONVERGING ILS RWY 35C

DALLAS-FORT WORTH INTL (DFW)

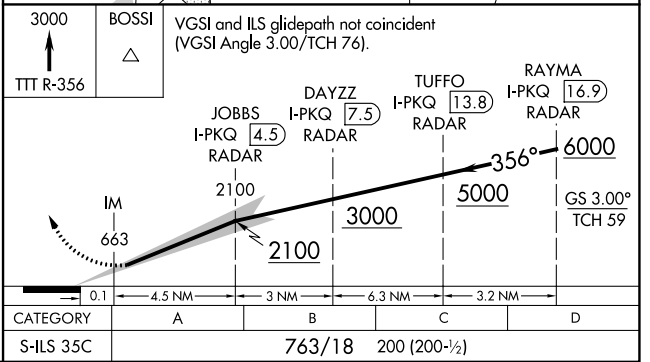
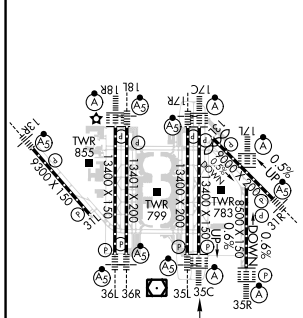
<p>DME or RADAR required. Simultaneous approach authorized with Converging ILS Rwy 31R.</p>	<p>ALSF-2</p>	<p>MISSED APPROACH: Climb to 3000 on TTT VOR/DME R-356 to BOSSI/TTT 19.7 DME/RADAR and hold.</p>
---	---------------	--

D-ATIS ARR 123.775 DEP 135.925	LONE STAR APP CON 127.075	DFW TOWER 126.55 127.5 EAST 124.15 134.9 WEST	GND CON 121.65 121.8 EAST 121.85 WEST	CLNC DEL 128.25	CPDLC
--	-------------------------------------	---	---	---------------------------	-------

RADAR REQUIRED



ELEV 607	TDZE 563
----------	----------



SC-2, 26 DEC 2024 to 23 JAN 2025

SC-2, 26 DEC 2024 to 23 JAN 2025