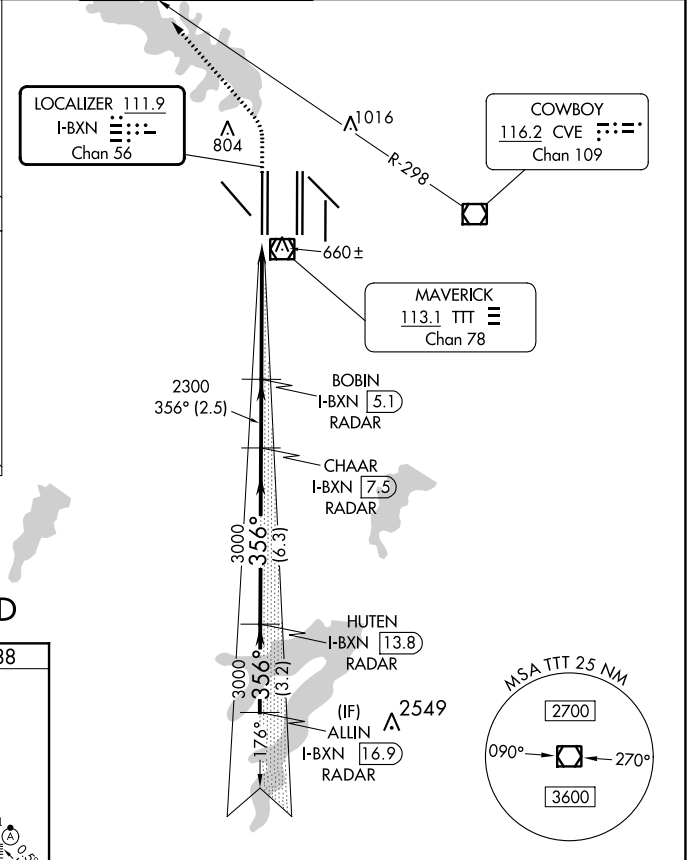
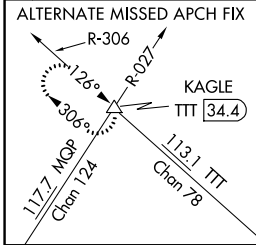
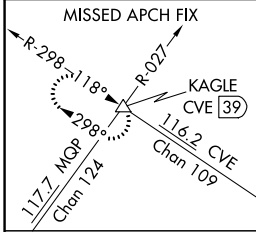


LOC/DME I-BXN <b>111.9</b> Chan <b>56</b>	APP CRS <b>356°</b>	Rwy Idg TDZE Apt Elev <b>13400</b> <b>588</b> <b>607</b>
---	------------------------	---

# CONVERGING ILS RWY 36L

DALLAS-FORT WORTH INTL (DFW)

<b>▼</b> DME or RADAR required. Simultaneous approach authorized with CONVERGING ILS RWY 31R.		<b>MALSR</b> 	<b>MISSED APPROACH:</b> Climb to 1100 then climbing left turn to 3000 on heading 315° and CVE VOR/DME R-298 to KAGLE INT/CVE VOR/DME 39 DME and hold.			
<b>D-ATIS</b> ARR <b>123.775</b> DEP <b>135.925</b>	<b>LONE STAR APP CON</b> <b>118.425</b>	<b>DFW TOWER</b> <b>126.55 127.5</b> EAST <b>124.15 134.9</b> WEST		<b>GND CON</b> <b>121.65 121.8</b> EAST <b>121.85</b> WEST	<b>CLNC DEL</b> <b>128.25</b>	<b>CPDLC</b>



## RADAR REQUIRED

ELEV <b>607</b>	<b>D</b>	TDZE <b>588</b>
-----------------	----------	-----------------

HIRL all Rws  
REIL Rws 13L and 31L  
TDZ/CL all Rws except 13L and 31L

1100	3000	CVE R-298	KAGLE	BOBIN I-BXN 5.1	CHAAR I-BXN 7.5	HUTEN I-BXN 13.8	ALLIN I-BXN 16.9
↑	hdg 315°	△	△	RADAR	RADAR	RADAR	RADAR
VGSI and ILS glidepath not coincident (VGSI Angle 3.00/TCH 72).				2300	3000	3000	4000
				2300	3000	3000	GS 3.00° TCH 55
				5.2 NM	2.5 NM	6.3 NM	3.2 NM
CATEGORY				A	B	C	D
S-ILS 36L				788/18 200 (200-1/2)			

# CONVERGING ILS RWY 36L

SC-2, 26 DEC 2024 to 23 JAN 2025

SC-2, 26 DEC 2024 to 23 JAN 2025