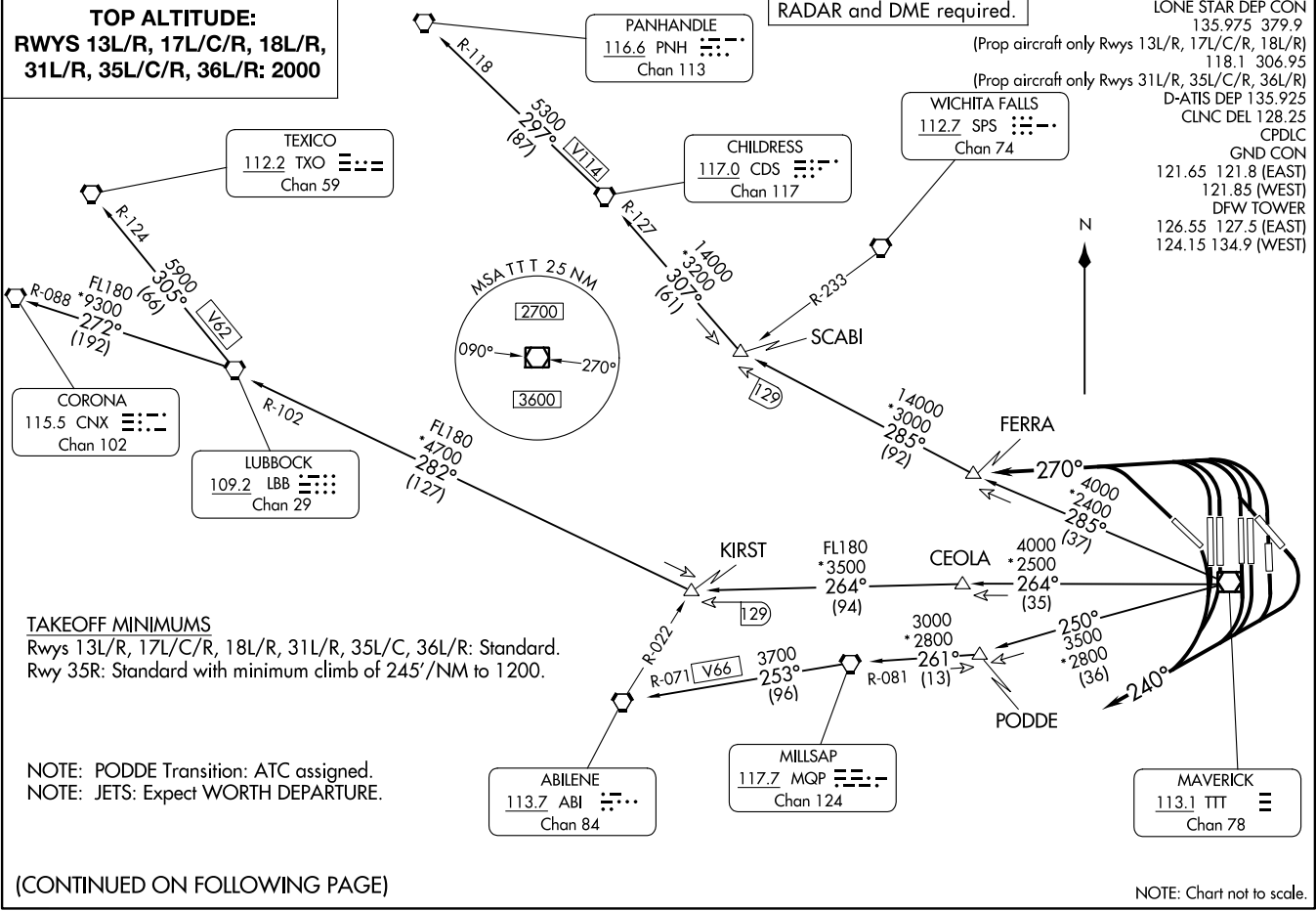


COYOTE FOUR DEPARTURE
 (CYOTE4.TTT) 25JAN24
 DALLAS-FORT WORTH, TEXAS
 DALLAS-FORT WORTH INTL (DFW)

TOP ALTITUDE:
RWYS 13L/R, 17L/C/R, 18L/R,
31L/R, 35L/C/R, 36L/R: 2000

RADAR and DME required.

LONE STAR DEP CON
 135.975 379.9
 118.1 306.95
 D-ATIS DEP 135.925
 CLNC DEL 128.25
 CPDIC
 GND CON
 121.65 121.8 (EAST)
 121.85 (WEST)
 DFW TOWER
 126.55 127.5 (EAST)
 124.15 134.9 (WEST)



TEXICO
 112.2 TXO
 Chan 59

PANHANDLE
 116.6 PNH
 Chan 113

CHILDRESS
 117.0 CDS
 Chan 117

WICHITA FALLS
 112.7 SPS
 Chan 74

CORONA
 115.5 CNX
 Chan 102

LUBBOCK
 109.2 LBB
 Chan 29

ABILENE
 113.7 ABI
 Chan 84

MILLSAP
 117.7 MQP
 Chan 124

MAVERICK
 113.1 TTT
 Chan 78

TAKEOFF MINIMUMS
 Rwy 13L/R, 17L/C/R, 18L/R, 31L/R, 35L/C, 36L/R: Standard.
 Rwy 35R: Standard with minimum climb of 245'/NM to 1200.

NOTE: PODDE Transition: ATC assigned.
 NOTE: JETS: Expect WORTH DEPARTURE.

(CONTINUED ON FOLLOWING PAGE)

NOTE: Chart not to scale.

(CYOTE4.TTT) 24305
 AL-6039 (FAA)
 DALLAS-FORT WORTH INTL (DFW)
 DALLAS-FORT WORTH, TEXAS

COYOTE FOUR DEPARTURE



DEPARTURE ROUTE DESCRIPTION

TAKEOFF RUNWAYS 13L/R, 17L/C/R, 18L/R: Climb on heading 240° for RADAR vectors to appropriate route, thence. . . .

TAKEOFF RUNWAYS 31L/R, 35L/C/R, 36L/R: Climb on heading 270° for RADAR vectors to appropriate route, thence. . . .

. . . .maintain 2000 and expect filed altitude 10 minutes after departure.

ABILENE TRANSITION (CYOTE4.ABI): From over TTT VOR/DME on TTT R-250 to PODDE, then on MQP R-081 to MQP VORTAC, then on MQP R-253 and ABI R-071 to ABI VORTAC.

CHILDRESS TRANSITION (CYOTE4.CDS): From over TTT VOR/DME on TTT R-285 to SCABI, then on CDS R-127 to CDS VORTAC.

CORONA TRANSITION (CYOTE4.CNX): From over TTT VOR/DME on TTT R-264 to KIRST, then on LBB R-102 to LBB VORTAC, then on LBB R-272 and CNX R-088 to CNX VORTAC.

LUBBOCK TRANSITION (CYOTE4.LBB): From over TTT VOR/DME on TTT R-264 to KIRST, then on LBB R-102 to LBB VORTAC.

MILLSAP TRANSITION (CYOTE4.MQP): From over TTT VOR/DME on TTT R-250 to PODDE, then on MQP R-081 to MQP VORTAC.

PANHANDLE TRANSITION (CYOTE4.PNH): From over TTT VOR/DME on TTT R-285 to SCABI, then on CDS R-127 to CDS VORTAC, then on CDS R-297 and PNH R-118 to PNH VORTAC.

PODDE TRANSITION (CYOTE4.PODDE): From over TTT VOR/DME on TTT R-250 to PODDE.

TEXICO TRANSITION (CYOTE4.TXO): From over TTT VOR/DME on TTT R-264 to KIRST, then on LBB R-102 to LBB VORTAC, then on LBB R-305 and TXO R-124 to TXO VORTAC.

SC-2, 26 DEC 2024 to 23 JAN 2025

SC-2, 26 DEC 2024 to 23 JAN 2025

COYOTE FOUR DEPARTURE