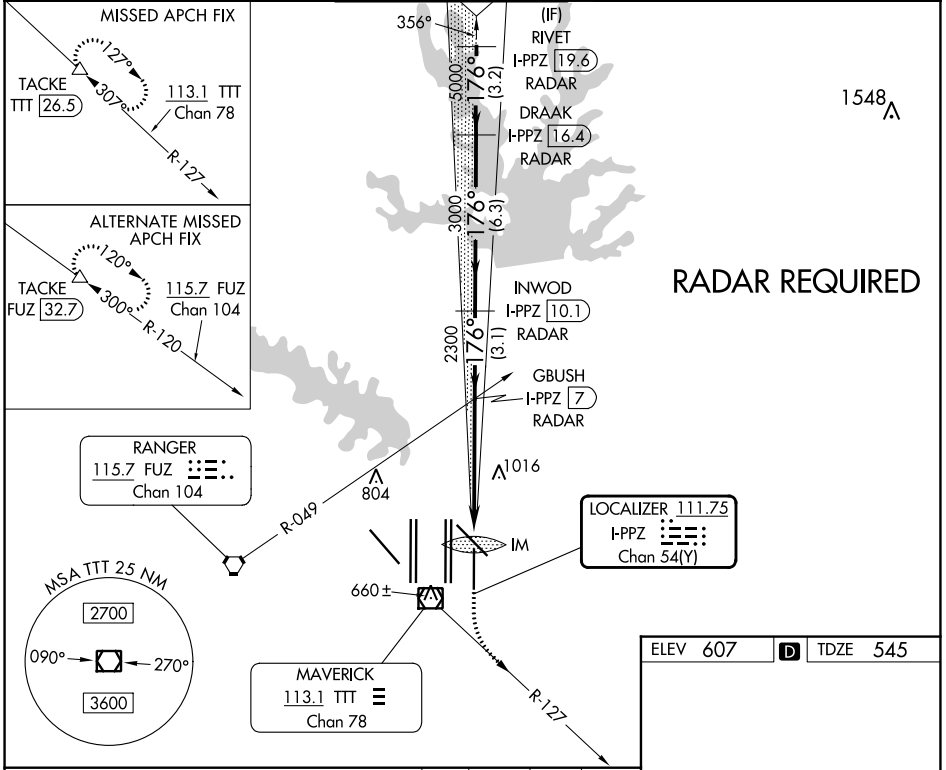


LOC/DME I-PPZ <b>111.75</b> Chan <b>54</b> (Y)	APP CRS <b>176°</b>	Rwy Idg TDZE Apt Elev	<b>8500</b> <b>545</b> <b>607</b>
--	------------------------	-----------------------------	---

# ILS RWY 17L (SA CAT I)

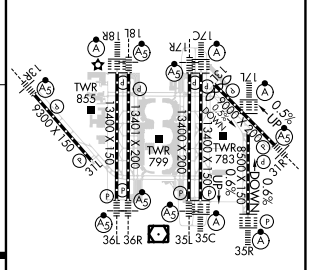
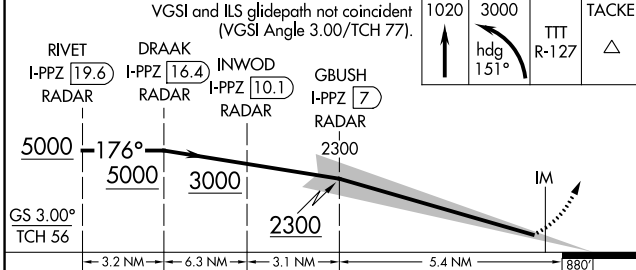
DALLAS-FORT WORTH INTL (DFW)

<b>Simultaneous approach authorized with Rwy 17C/R and Rwy 18L/R. DME required. Requires specific OPSPEC, MSPEC, or LOA approval and use of HUD to DA.</b>		ALSF-2 	<b>MISSED APPROACH:</b> Climb to 1020 then climbing left turn to 3000 on heading 151° and TTT VOR/DME R-127 to TACKE/TTT 26.5 DME and hold.		
D-ATIS ARR <b>123.775</b> DEP <b>135.925</b>	LONE STAR APP CON <b>119.4</b>	DFW TOWER <b>126.55 127.5</b> EAST <b>124.15 134.9</b> WEST	GND CON <b>121.65 121.8</b> EAST <b>121.85</b> WEST	CLNC DEL <b>128.25</b>	CPDLC



**RADAR REQUIRED**

ELEV 607	<b>D</b>	TDZE 545
----------	----------	----------



CATEGORY	A	B	C	D
S-ILS 17L	RA 165/14 150 DA 695			
<b>SA CATEGORY I ILS - SPECIAL AIRCREW &amp; AIRCRAFT CERTIFICATION REQUIRED</b>				

HIRL all Rwys  
REL Rwys 13L and 31L  
TDZ/CL all Rwys except 13L and 31L

SC-2, 26 DEC 2024 to 23 JAN 2025

SC-2, 26 DEC 2024 to 23 JAN 2025