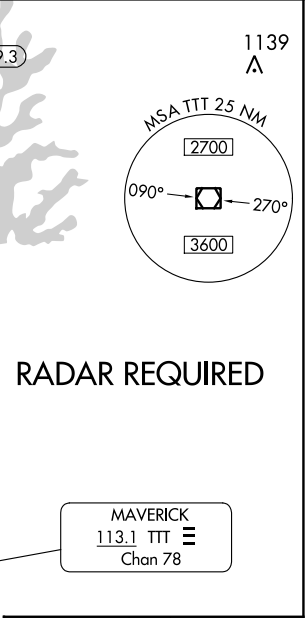
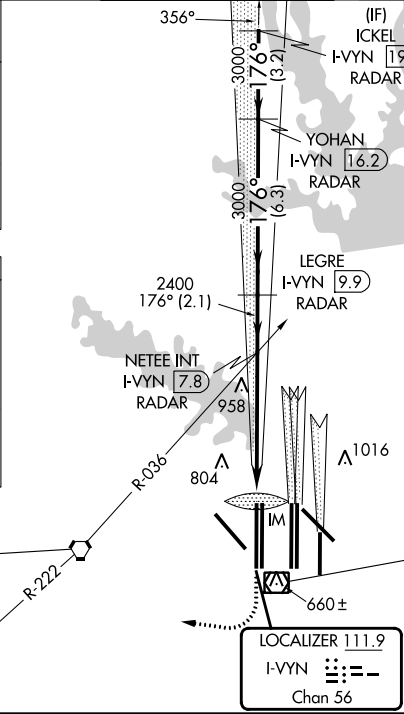
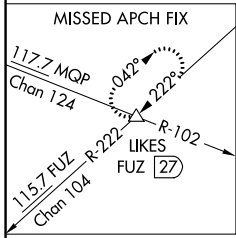
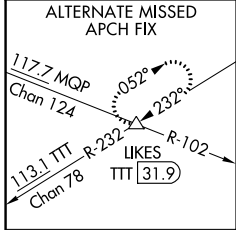


LOC/DME I-VYIN 111.9 Chan 56	APP CRS 176°	Rwy Idg TDZE Apt Elev 13400 607 607
--	------------------------	---

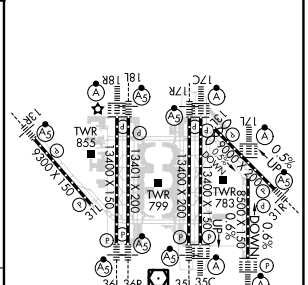
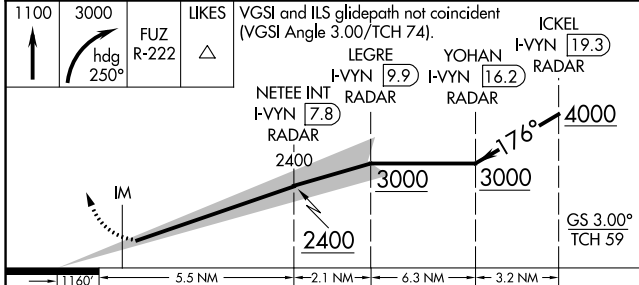
ILS RWY 18R (SA CAT I)

DALLAS-FORT WORTH INTL (DFW)

<p>DME or RADAR required. Simultaneous approach authorized with Rwy 17 L/C/R. Requires specific OPSPEC, MSPEC, or LOA approval and use of HUD to DH.</p>	<p>Rwy 18 ALSF-2</p>	<p>MISSED APPROACH: Climb to 1100 then climbing right turn to 3000 on heading 250° and FUZ VORTAC R-222 to LIKES INT/FUZ VORTAC 27 DME and hold.</p>	
		<p>D-ATIS ARR 123.775 DEP 135.925</p>	<p>LONE STAR APP CON 118.425</p>
		<p>CLNC DEL 128.25</p>	<p>CPDLC</p>



ELEV 607	D	TDZE 607
----------	----------	----------



CATEGORY	A	B	C	D
S-ILS 18R	RA 158/14		150 DA 757	

SA CATEGORY I ILS - SPECIAL AIRCREW & AIRCRAFT CERTIFICATION REQUIRED

HIREL all Rwys
REIL Rwy 13L and 31L
TDZ/CL all Rwy except 13L and 31L

SC-2, 26 DEC 2024 to 23 JAN 2025

SC-2, 26 DEC 2024 to 23 JAN 2025