


LOC/DME I-RRR 110.9 Chan 46	APP CRS 311°	Rwy Idg TDZE Apt Elev	8373 523 607
---	------------------------	-----------------------------	---

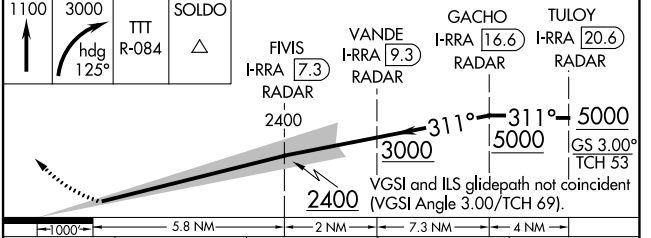
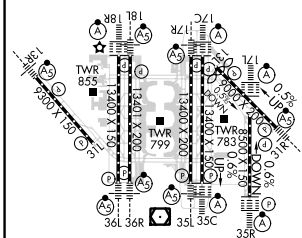
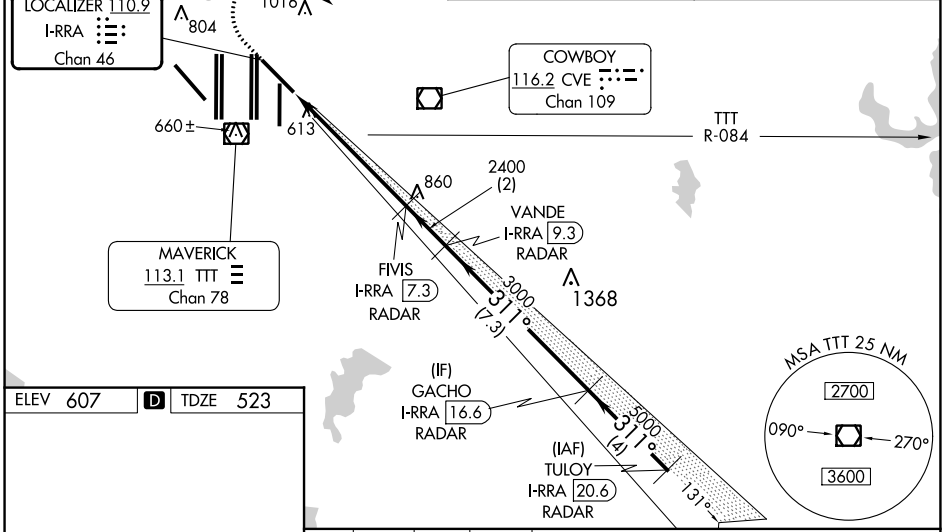
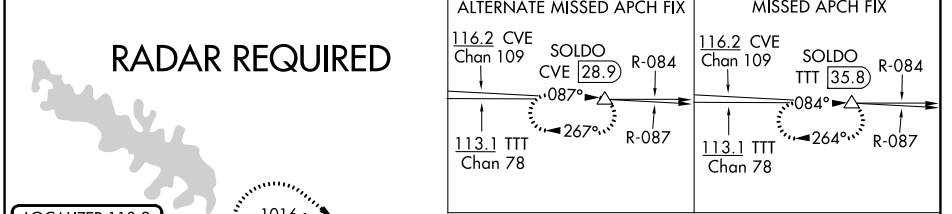
ILS RWY 31R (SA CAT I & CAT II)

DALLAS-FORT WORTH INTL (DFW)

Simultaneous approach authorized. DME required.
SA Cat I: Requires specific OPSPEC, MSPEC, or LOA approval and use of HUD to DH. SA Cat II: Reduced lighting: Requires specific OPSPEC, MSPEC, or LOA approval and use of autoland or HUD to touchdown.

MALS 
MISSED APPROACH: Climb to 1100 then climbing right turn to 3000 on heading 125° and TTT VOR/DME R-084 to SOLDO/TTT 35.8 DME and hold.

D-ATIS ARR 123.775 DEP 135.925	LONE STAR APP CON 135.5 125.2	DFW TOWER 126.55 127.5 EAST 124.15 134.9 WEST	GND CON 121.65 121.8 EAST 121.85 WEST	CLNC DEL 128.25	CPDLC
--	---	---	---	---------------------------	-------



ELEV 607	D	TDZE 523					
1100	3000	TTT R-084	SOLDO				
<table border="1"> <tr> <td>5.8 NM</td> <td>2 NM</td> <td>7.3 NM</td> <td>4 NM</td> </tr> </table>				5.8 NM	2 NM	7.3 NM	4 NM
5.8 NM	2 NM	7.3 NM	4 NM				
CATEGORY	A	B	C	D			
S-ILS 31R	SA CAT I	RA 176/14	150 DA 673				
S-ILS 31R	SA CAT II	RA 121/12	100 DA 623				

SA CATEGORY I & II ILS SPECIAL AIRCREW & AIRCRAFT CERTIFICATION REQUIRED

SC-2, 26 DEC 2024 to 23 JAN 2025

SC-2, 26 DEC 2024 to 23 JAN 2025