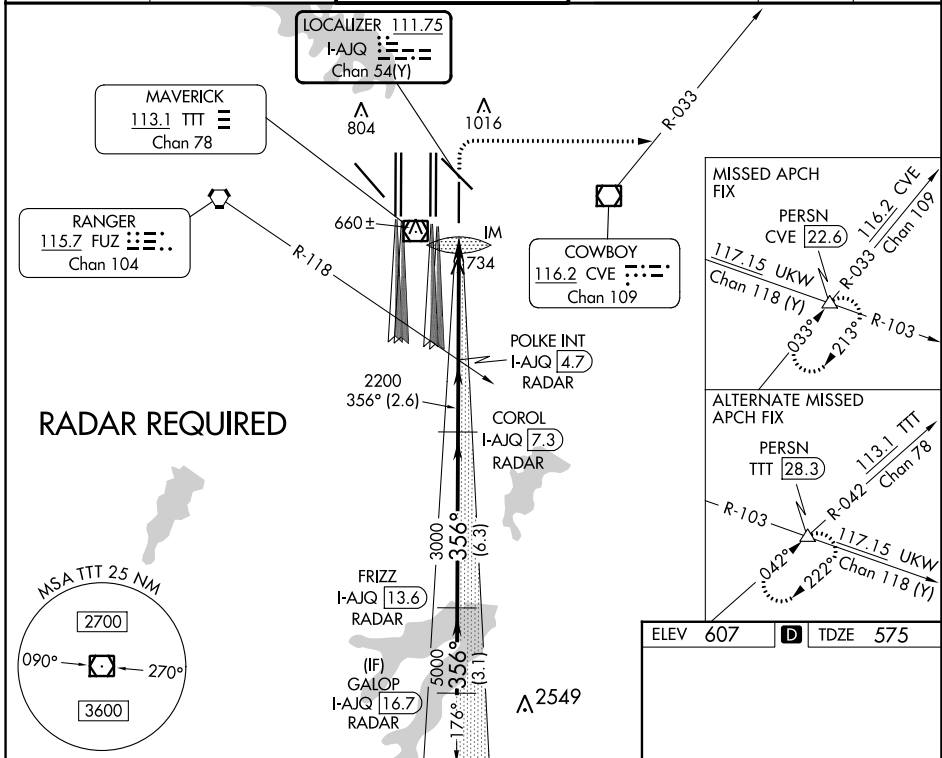


LOC/DME I-AJQ 111.75 Chan 54 (Y)	APP CRS 356°	Rwy Idg 8500 TDZE 575 Apt Elev 607
--	------------------------	---

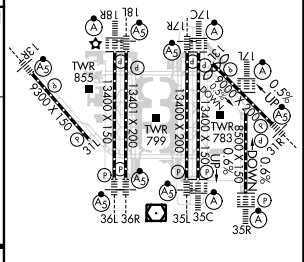
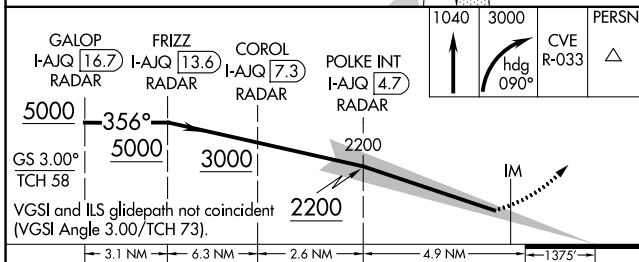
ILS RWY 35R (SA CAT I)
DALLAS-FORT WORTH INTL (DFW)

ALSF-2 MISSED APPROACH: Climb to 1040 then climbing right turn to 3000 on heading 090° and CVE VOR/DME R-033 to PERSN/CVE 22.6 DME and hold.					
D-ATIS ARR 123.775 DEP 135.925	LONE STAR APP CON 119.4	DFW TOWER 126.55 127.5 EAST 124.15 134.9 WEST	GND CON 121.65 121.8 EAST 121.85 WEST	CLNC DEL 128.25	CPDLC



SC-2, 26 DEC 2024 to 23 JAN 2025

SC-2, 26 DEC 2024 to 23 JAN 2025



5000	356°	5000	3000	2200	1040
RA 144/14 150 DA 725					
SA CATEGORY I ILS - SPECIAL AIRCREW & AIRCRAFT CERTIFICATION REQUIRED					

ELEV 607	D TDZE 575
HIRL all Rwys REL Rwys 13L and 31L TDZ/CL all Rwys except 13L, and 31L	