

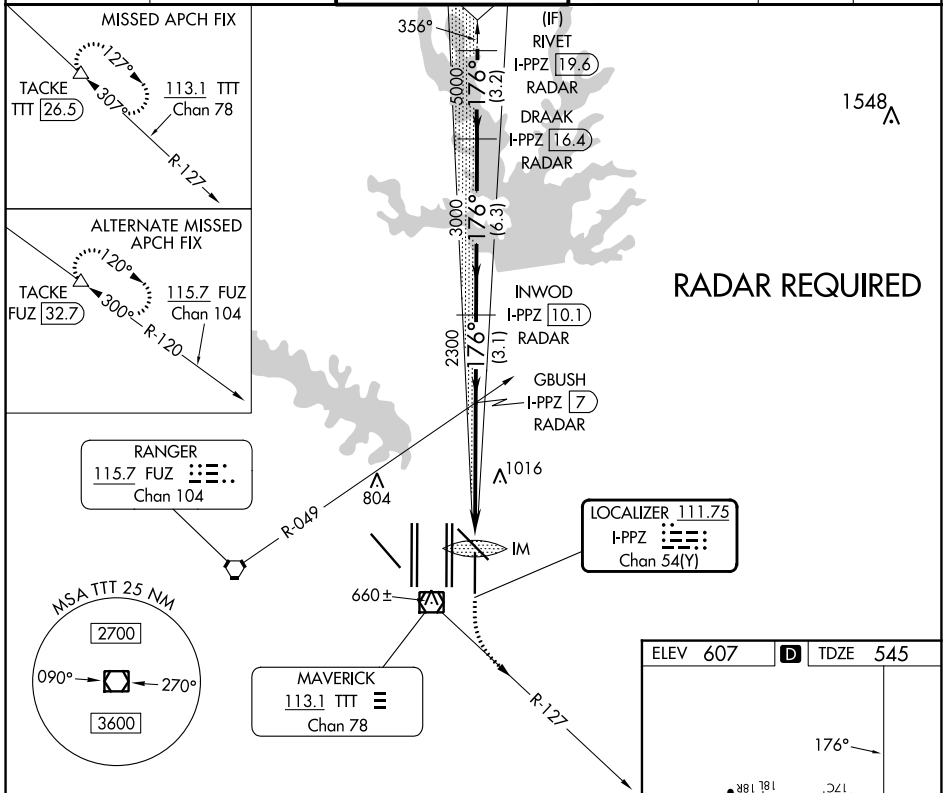
LOC/DME I-PPZ 111.75 Chan 54 (Y)	APP CRS 176°	Rwy Idg 8500 TDZE 545 Apt Elev 607
--	------------------------	---

ILS or LOC RWY 17L

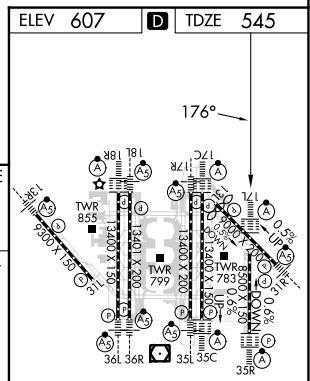
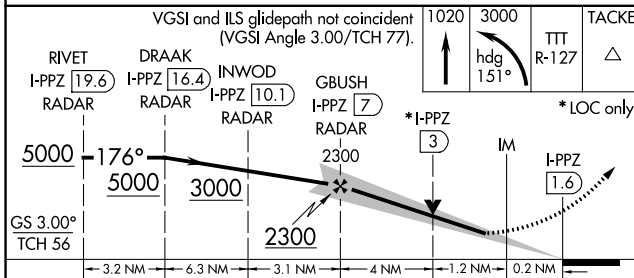
DALLAS-FORT WORTH INTL (DFW)

<p>Simultaneous approach authorized with Rwy 17C/R and Rwy 18L/R. DME required.</p>	<p>ALSF-2</p>	<p>MISSED APPROACH: Climb to 1020 then climbing left turn to 3000 on heading 151° and TTT VOR/DME R-127 to TACKE/TTT 26.5 DME and hold.</p>
---	---------------	---

D-ATIS ARR 123.775 DEP 135.925	LONE STAR APP CON 119.4	DFW TOWER 126.55 127.5 EAST 124.15 134.9 WEST	GND CON 121.65 121.8 EAST 121.85 WEST	CLNC DEL 128.25	CPDLC
--	-----------------------------------	---	---	---------------------------	-------



RADAR REQUIRED



CATEGORY	A	B	C	D	
S-ILS 17L	745/18 200 (200-½)				
S-LOC 17L	1040/24	495 (500-½)	1040/50	495 (500-1)	
HIRL all Rwy's					
REIL Rwy's 13L and 31L					
TDZ/CL all Rwy's except 13L and 31L					
FAF to MAP 5.4 NM					
Knots	60	90	120	150	180
Min:Sec	5:24	3:36	2:42	2:10	1:48

SC-2, 26 DEC 2024 to 23 JAN 2025

SC-2, 26 DEC 2024 to 23 JAN 2025