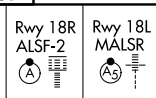


ILS or LOC RWY 18R

DALLAS-FORT WORTH INTL (DFW)

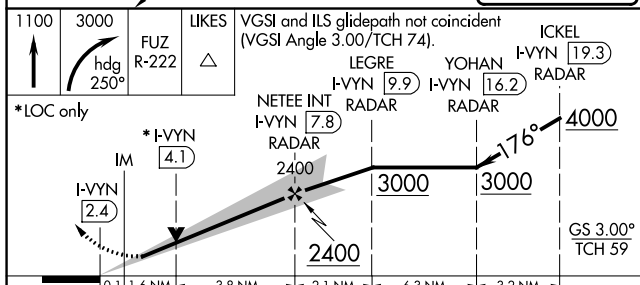
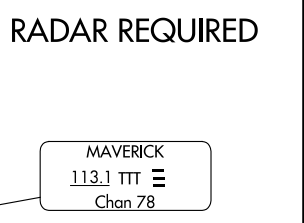
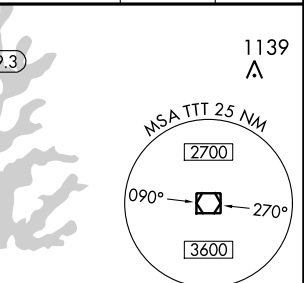
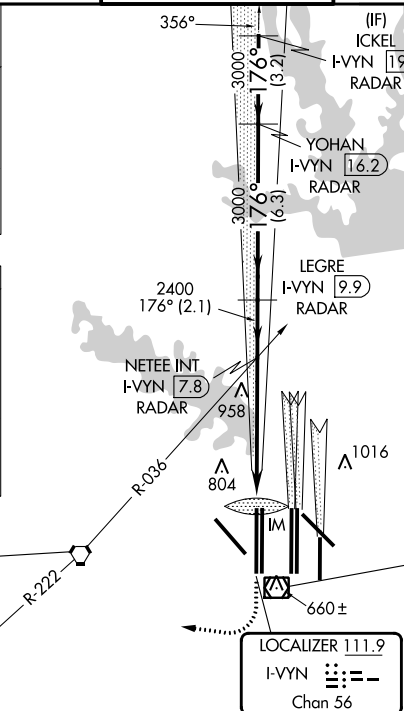
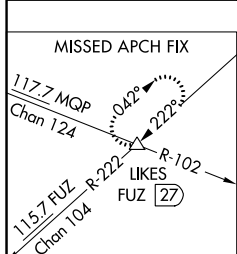
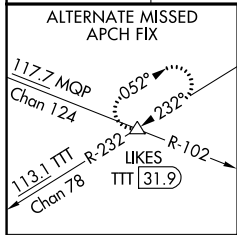
LOC/DME I-VYIN 111.9 Chan 56	APP CRS 176°	Rwy Idg TDZE Apt Elev	18R 13400 607 607	18L 13401 602 607
--	------------------------	-----------------------------	---	---

⚠ Inop table does not apply to Sidestep 18L Cats A and B. DME or RADAR required. Simultaneous approach authorized with Rwy 17 L/C/R. For inop ALSF/MALSR, increase S-LOC 18R Cat C/D and Sidestep 18L Cat C visibility to 1 $\frac{1}{4}$ mile.

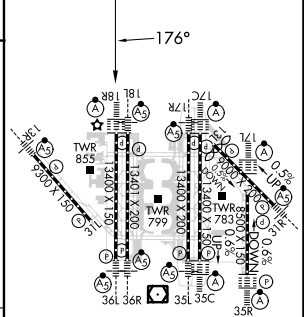


MISSED APPROACH: Climb to 1100 then climbing right turn to 3000 on heading 250° and FUZ VORTAC R-222 to LIKES INT/FUZ VORTAC 27 DME and hold.

D-ATIS ARR 123.775 DEP 135.925	LONE STAR APP CON 118.425	DFW TOWER 126.55 127.5 EAST 124.15 134.9 WEST	GND CON 121.65 121.8 EAST 121.85 WEST	CLNC DEL 128.25	CPDLC
--	-------------------------------------	---	---	---------------------------	-------



ELEV 607	D TDZE 18R 607
	TDZE 18L 602



CATEGORY	A	B	C	D
S-ILS 18R	807/18		200 (200- $\frac{1}{2}$)	
S-LOC 18R	1220/24	613 (700- $\frac{1}{2}$)	1220-1 $\frac{3}{8}$	613 (700-1 $\frac{3}{8}$)
SIDESTEP 18L	1220/50	618 (700-1)	1220-1 $\frac{3}{8}$	1220-1 $\frac{1}{2}$ 618 (700-1 $\frac{1}{2}$)

HIRL all Rwys	
REIL Rwys 13L and 31L	
TDZ/CL all Rwys except 13L and 31L	
FAF to MAP 5.5 NM	
Knots	60 90 120 150 180
Min:Sec	5:30 3:40 2:45 2:12 1:50

SC-2, 26 DEC 2024 to 23 JAN 2025

SC-2, 26 DEC 2024 to 23 JAN 2025