

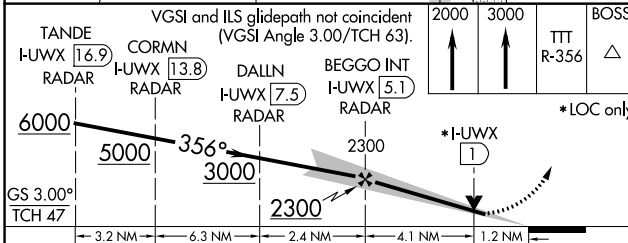
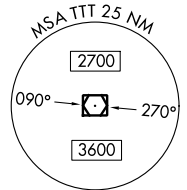
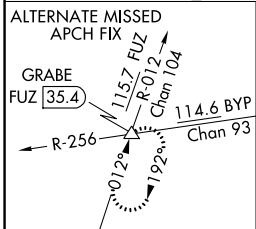
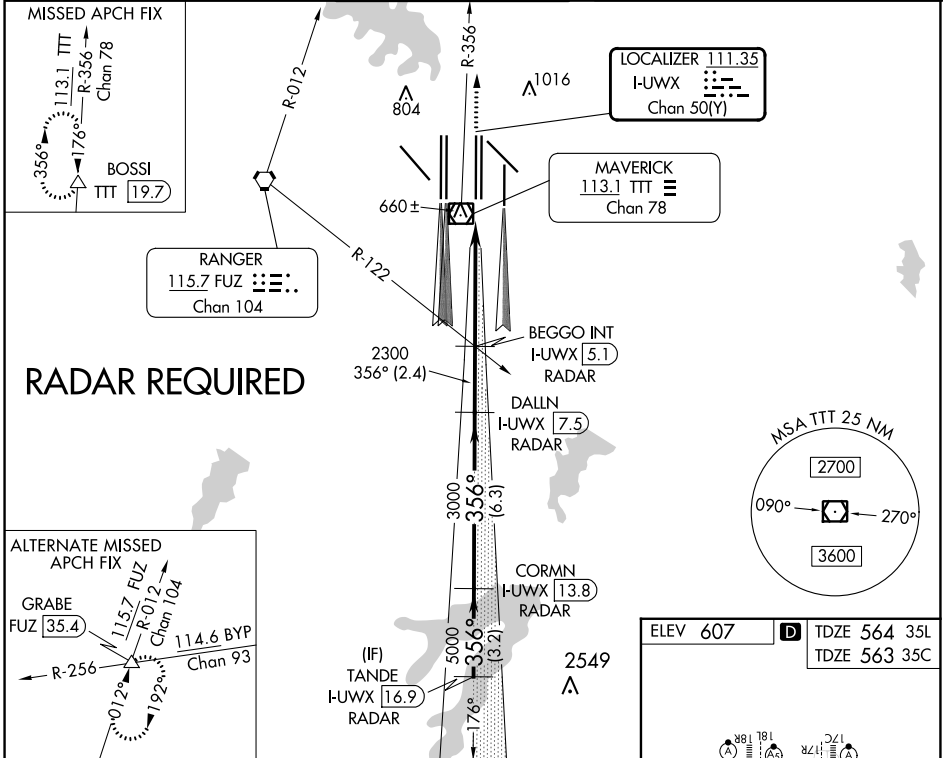
LOC/DME I-UWX 111.35 Chan 50 (Y)	APP CRS 356°	Rwy Idg 35L 35C TDZE 564 563 Apt Elev 607 607
--	------------------------	--

ILS or LOC RWY 35L

DALLAS-FORT WORTH INTL (DFW)

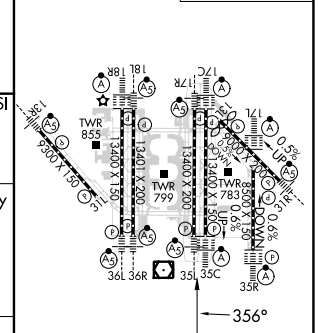
DME or RADAR required. Simultaneous approach authorized with Rwy 36 L/R and Rwy 35R. Inop table does not apply to Sidestep Rwy 35C.	Rwy 35L MALS R 	Rwy 35C ALS F-2 	MISSED APPROACH: Climb to 2000 then climb to 3000 on TTT VOR/DME R-356 to BOSSI/TTT 19.7 DME and hold.
---	-----------------------	------------------------	--

D-ATIS ARR 123.775 DEP 135.925	LONE STAR APP CON 127.075	DFW TOWER 126.55 127.5 EAST 124.15 134.9 WEST	GND CON 121.65 121.8 EAST 121.85 WEST	CLNC DEL 128.25	CPDLC
--	-------------------------------------	---	---	---------------------------	-------



TAND E I-UWX [16.9] RADAR CORM N I-UWX [13.8] RADAR DALL N I-UWX [7.5] RADAR BEGGO INT I-UWX [5.1] RADAR	BOSSI TTT R-356 △
CATEGORY A S-ILS 35L 764/18 S-LOC 35L 1000/24 436 (400-1/2) SIDESTEP 35C 1000-1 437 (400-1)	CATEGORY B 200 (200-1/2) 1000/40 436 (400-3/4) 1000-1 1/2 437 (400-1/2)
CATEGORY C 1000-2 437 (400-2)	CATEGORY D 1000-2 437 (400-2)

ELEV 607	D TDZE 564 35L
	TDZE 563 35C



HIRL all Rwys	
REIL Rwys 13L and 31L	
TDZ/CL all Rwys except 13L, and 31L	
FAF to MAP 5.3 NM	
Knots	60 90 120 150 180
Min:Sec	5:18 3:32 2:39 2:07 1:46

SC-2, 26 DEC 2024 to 23 JAN 2025

SC-2, 26 DEC 2024 to 23 JAN 2025