

LOWGN EIGHT DEPARTURE (RNAV)

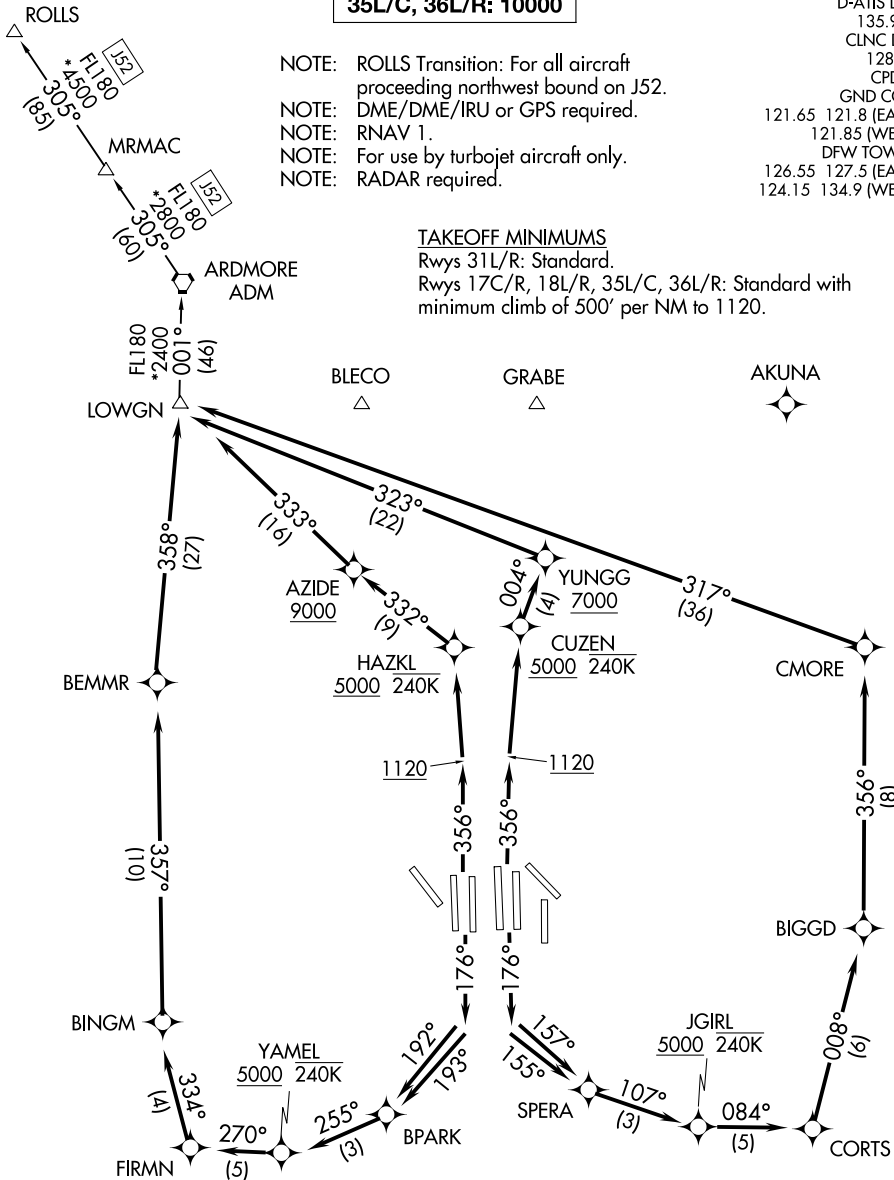
TOP ALTITUDE:
RWYS 31L/R: 5000
RWYS 17C/R, 18L/R,
35L/C, 36L/R: 10000

LONE STAR DEP CON
118.55 290.35 (Rwys 17R/C)
126.47 363.15 (Rwys 18L/R)
125.12 353.95 (Rwys 35L/C and 36L/R)
D-ATIS DEP
135.925
CLNC DEL
128.25
CPDLC
GND CON
121.65 121.8 (EAST)
121.85 (WEST)
DFW TOWER
126.55 127.5 (EAST)
124.15 134.9 (WEST)

- NOTE: ROLLS Transition: For all aircraft proceeding northwest bound on J52.
- NOTE: DME/DME/IRU or GPS required.
- NOTE: RNAV 1.
- NOTE: For use by turbojet aircraft only.
- NOTE: RADAR required.

TAKEOFF MINIMUMS

Rwys 31L/R: Standard.
Rwys 17C/R, 18L/R, 35L/C, 36L/R: Standard with minimum climb of 500' per NM to 1120.



NOTE: Chart not to scale.

(CONTINUED ON FOLLOWING PAGE)

LOWGN EIGHT DEPARTURE (RNAV)

SC-2, 26 DEC 2024 to 23 JAN 2025

SC-2, 26 DEC 2024 to 23 JAN 2025



DEPARTURE ROUTE DESCRIPTION

TAKEOFF RWY 17C: Climb heading 176° to intercept course 157° to SPERA, then on track 107° to cross JGIRL at or above 5000 and at or below 240K, then on depicted route to LOWGN, thence. . . .

TAKEOFF RWY 17R: Climb heading 176° to intercept course 155° to SPERA, then on track 107° to cross JGIRL at or above 5000 and at or below 240K, then on depicted route to LOWGN, thence. . . .

TAKEOFF RWY 18L: Climb heading 176° to intercept course 193° to BPARK, then on track 255° to cross YAMEL at or above 5000 and at or below 240K, then on depicted route to LOWGN, thence. . . .

TAKEOFF RWY 18R: Climb heading 176° to intercept course 192° to BPARK, then on track 255° to cross YAMEL at or above 5000 and at or below 240K, then on depicted route to LOWGN, thence. . . .

TAKEOFF RWYS 35C/L: Climb heading 356° to 1120, then direct CUZEN, cross CUZEN at or above 5000 and at or below 240K, then on track 004° to cross YUNGG at or above 7000, then on depicted route to LOWGN, thence. . . .

TAKEOFF RWYS 36L/R: Climb heading 356° to 1120, then direct HAZKL, cross HAZKL at or above 5000 and at or below 240K, then on track 332° to cross AZIDE at or above 9000, then on depicted route to LOWGN, thence. . . .

. . . .on (transition) maintain 10000. Expect filed altitude ten minutes after departure.

TAKEOFF RWYS 31L/R: Climb heading assigned by ATC, expect RADAR vectors to LOWGN, thence. . . .

. . . .on (transition) maintain 5000. Expect filed altitude ten minutes after departure.

ARDMORE TRANSITION (LOWGN8.ADM)

ROLLS TRANSITION (LOWGN8.ROLLS)

SC-2, 26 DEC 2024 to 23 JAN 2025

SC-2, 26 DEC 2024 to 23 JAN 2025