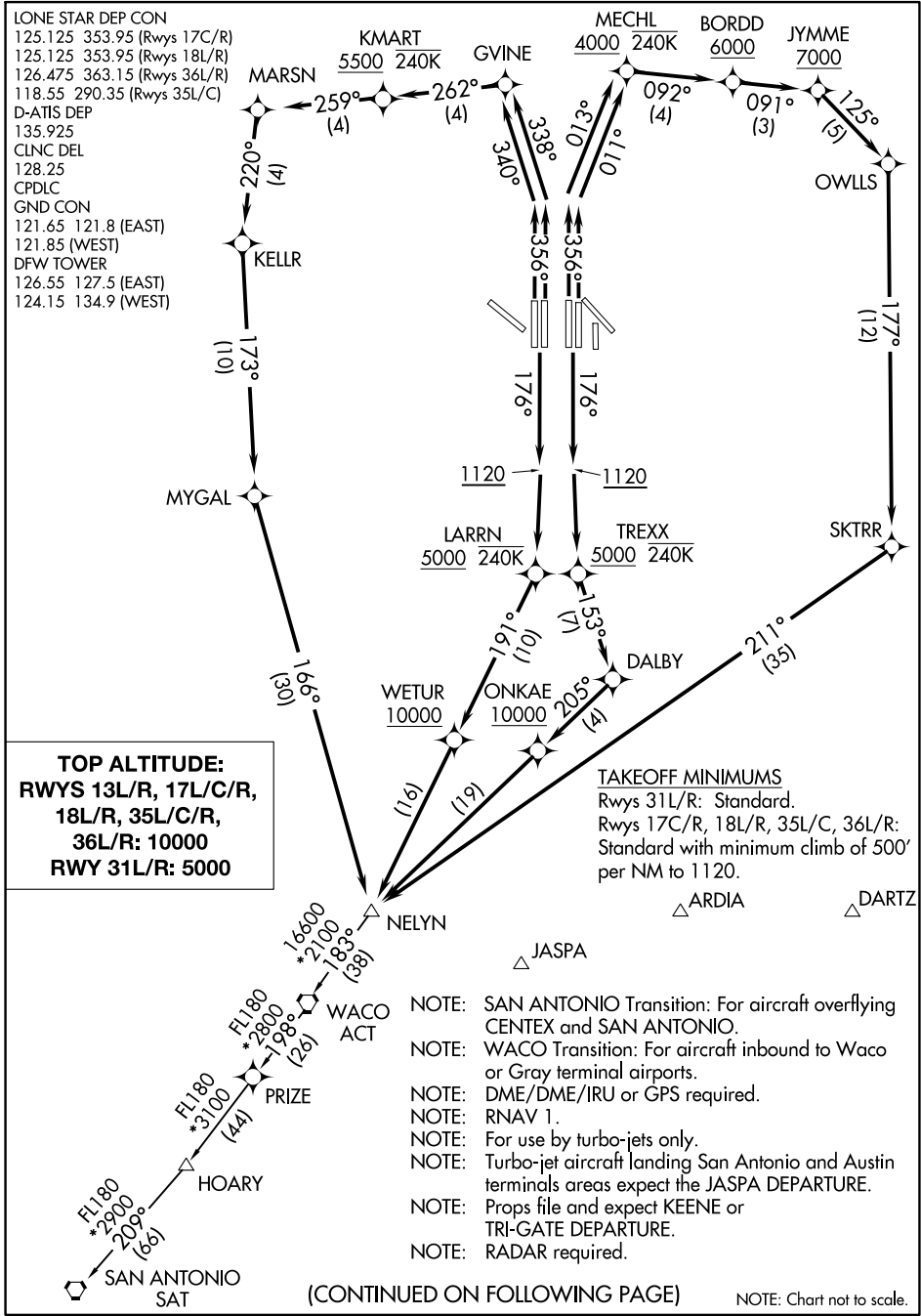


NELYN SIX DEPARTURE (RNAV)



SC-2, 26 DEC 2024 to 23 JAN 2025

SC-2, 26 DEC 2024 to 23 JAN 2025

NELYN SIX DEPARTURE (RNAV)



DEPARTURE ROUTE DESCRIPTION

TAKEOFF RUNWAYS 17C/R: Climb on heading 176° to 1120, then direct TREXX, cross TREXX at or above 5000 and at or below 240K, then on track 153° to DALBY, then on track 205° to cross ONKAE at or above 10000, then on depicted route to NELYN, thence. . . .

TAKEOFF RUNWAYS 18L/R: Climb on heading 176° to 1120, then direct LARRN, cross LARRN at or above 5000 and at or below 240K, then on track 191° to cross WETUR at or above 10000, then on depicted route to NELYN, thence. . . .

TAKEOFF RUNWAY 35C: Climb on heading 356° to intercept course 011° to cross MECHL at or above 4000 and at or below 240K, then on track 092° to cross BORDD at or above 6000, then on track 091° to cross JYMME at or above 7000, then on depicted route to NELYN, thence. . . .

TAKEOFF RUNWAY 35L: Climb on heading 356° to intercept course 013° to cross MECHL at or above 4000 and at or below 240K, then on track 092° to cross BORDD at or above 6000, then on track 091° to cross JYMME at or above 7000, then on depicted route to NELYN, thence. . . .

TAKEOFF RUNWAY 36L: Climb on heading 356° to intercept course 340° to GVINE, then on course 262° to cross KMART at or above 5500 and at or below 240K, then on depicted route to NELYN, thence. . . .

TAKEOFF RUNWAY 36R: Climb on heading 356° to intercept course 338° to GVINE, then on course 262° to cross KMART at or above 5500 and at or below 240K, then on depicted route to NELYN, thence. . . .

TAKEOFF RUNWAYS 31L/R: Climb on heading assigned by ATC, expect RADAR vectors to NELYN, maintain 5000, expect filed altitude ten minutes after departure.

. . . .(transition) Maintain 10000, expect filed altitude ten minutes after departure.

HOARY TRANSITION (NELYN6.HOARY):

SAN ANTONIO TRANSITION (NELYN6.SAT):

WACO TRANSITION (NELYN6.ACT):

SC-2, 26 DEC 2024 to 23 JAN 2025

SC-2, 26 DEC 2024 to 23 JAN 2025