

WAAS CH <b>4000B</b> <b>W17B</b>	APP CRS <b>176°</b>	Rwy Idg <b>8500</b> TDZE <b>545</b> Apt Elev <b>607</b>
--	------------------------	---

# RNAV (GPS) RWY 17L

DALLAS-FORT WORTH INTL (DFW)

▼ For uncompensated Baro-VNAV systems, LNAV/VNAV NA below -5°C (23°F) or above 54°C (130°F). DME/DME RNP-0.3 NA. Simultaneous approach authorized with Rwy 17C/R and Rwy 18L/R. LNAV procedure NA during simultaneous operations. Use of FD or AP providing RNAV track guidance required during simultaneous operations.

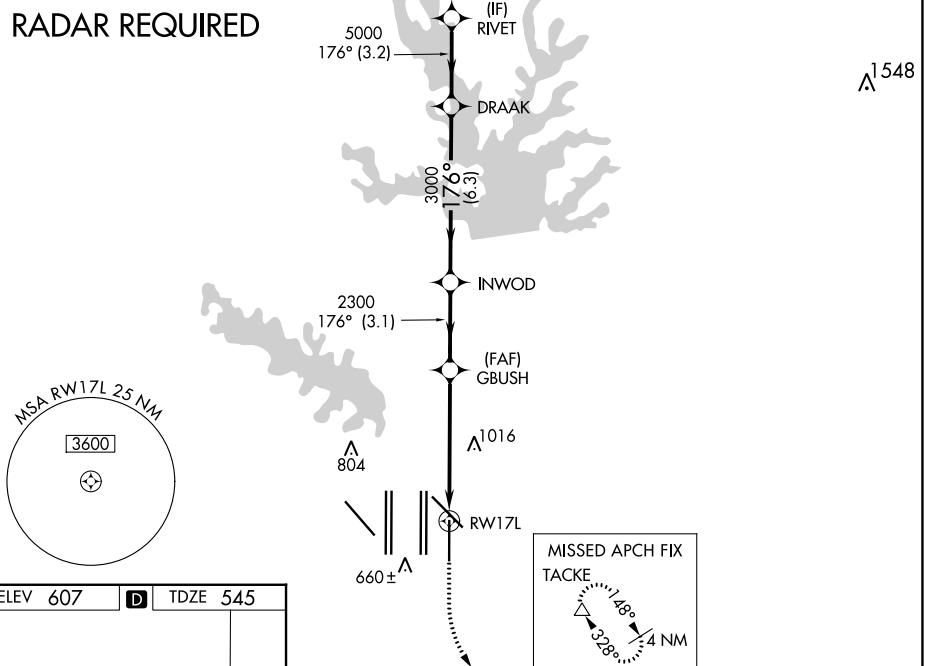
ALSF-2



MISSED APPROACH: Climb to 1020 then climbing left turn to 3000 direct TACKE and hold.

D-ATIS ARR <b>123.775</b> DEP <b>135.925</b>	LONE STAR APP CON <b>119.4</b>	DFW TOWER <b>126.55 127.5</b> EAST <b>124.15 134.9</b> WEST	GND CON <b>121.65 121.8</b> EAST <b>121.85</b> WEST	CLNC DEL <b>128.25</b>	CPDLC
--	-----------------------------------	---	---	---------------------------	-------

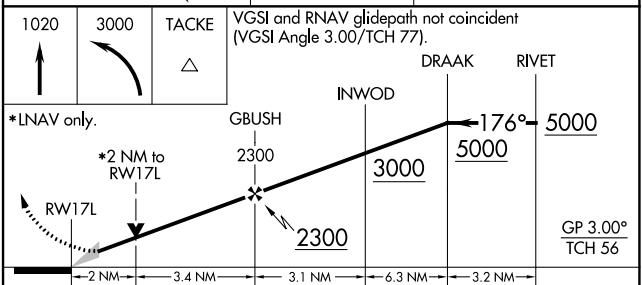
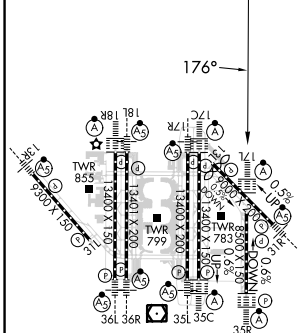
## RADAR REQUIRED



SC-2, 26 DEC 2024 to 23 JAN 2025

SC-2, 26 DEC 2024 to 23 JAN 2025

ELEV <b>607</b>	<b>D</b>	TDZE <b>545</b>
-----------------	----------	-----------------



CATEGORY	A	B	C	D
LPV DA		745/18	200 (200-½)	
LNAV/VNAV DA		1063/60	518 (500-1¼)	
LNAV MDA	1240/24	695 (700-½)	1240-1½	695 (700-1½)

HIRL all Rwys  
REIL Rwys 13L and 31L  
TDZ/CL all Rwys except 13L and 31L