

WAAS CH 86807 W18A	APP CRS 176°	Rwy Idg 13401 TDZE 602 Apt Elev 606
--	------------------------	--

RNAV (GPS) RWY 18L

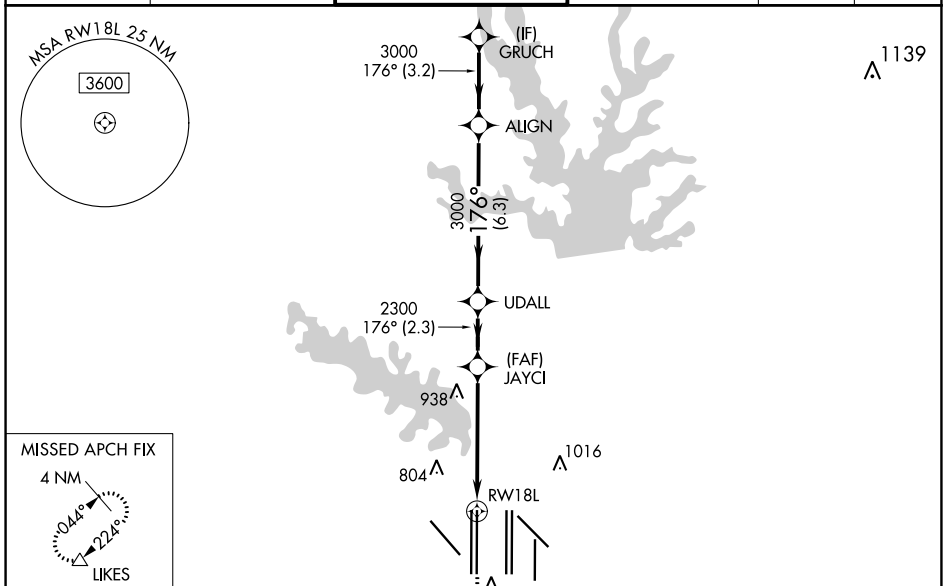
DALLAS-FORT WORTH INTL (DFW)

RADAR required for procedure entry. RNP APCH.

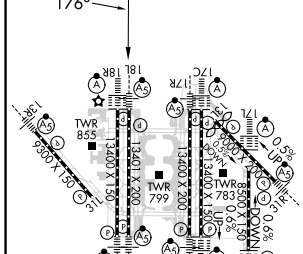
Simultaneous approach authorized with Rwy 17L/C/R. For uncompensated Baro-VNAV systems, LNAV/VNAV NA below -4°C or above 54°C. LNAV procedure NA during simultaneous operations. Use of FD or AP providing RNAV track guidance required during simultaneous operations. For inop ALS, increase LNAV/VNAV all Cats visibility to RVR 6000 and LNAV Cats C and D visibility to 1¼ SM.

MALSRS 	MISSED APPROACH: Climb to 1100, then climbing right turn to 3000 direct LIKES and hold.
------------	---

D-ATIS ARR 123.775 DEP 135.925	LONE STAR APP CON 118.425	DFW TOWER 126.55 127.5 EAST 124.15 134.9 WEST	GND CON 121.65 121.8 EAST 121.85 WEST	CLNC DEL 128.25	CPDLC
--	-------------------------------------	---	---	---------------------------	-------



ELEV 606	D	TDZE 602
----------	----------	----------



1100	3000	LIKES	VGSI and RNAV glidepath not coincident (VGSI Angle 3.00°/TCH 70).	GRUCH
*LNAV only.				
		JAYCI 2300	UDALL 3000	ALIGN 3000
				GRUCH 4000
				GP 3.00° TCH 55

CATEGORY	A	B	C	D
LPV DA		802/18	200 (200-½)	
LNAV/VNAV DA		1013/40	411 (500-¾)	
LNAV MDA	1220/24	618 (700-½)	1220-1⅜	618 (700-1⅜)

HIRL all Rwys
REIL Rws 13L and 31L
TDZ/CL all Rws except 13L and 31L

SC-2, 26 DEC 2024 to 23 JAN 2025

SC-2, 26 DEC 2024 to 23 JAN 2025