

WAAS CH <b>40401</b> <b>W35A</b>	APP CRS <b>356°</b>	Rwy Idg <b>8500</b> TDZE <b>575</b> Apt Elev <b>607</b>
--	------------------------	---

# RNAV (GPS) RWY 35R

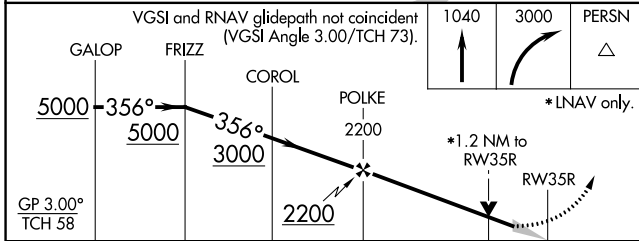
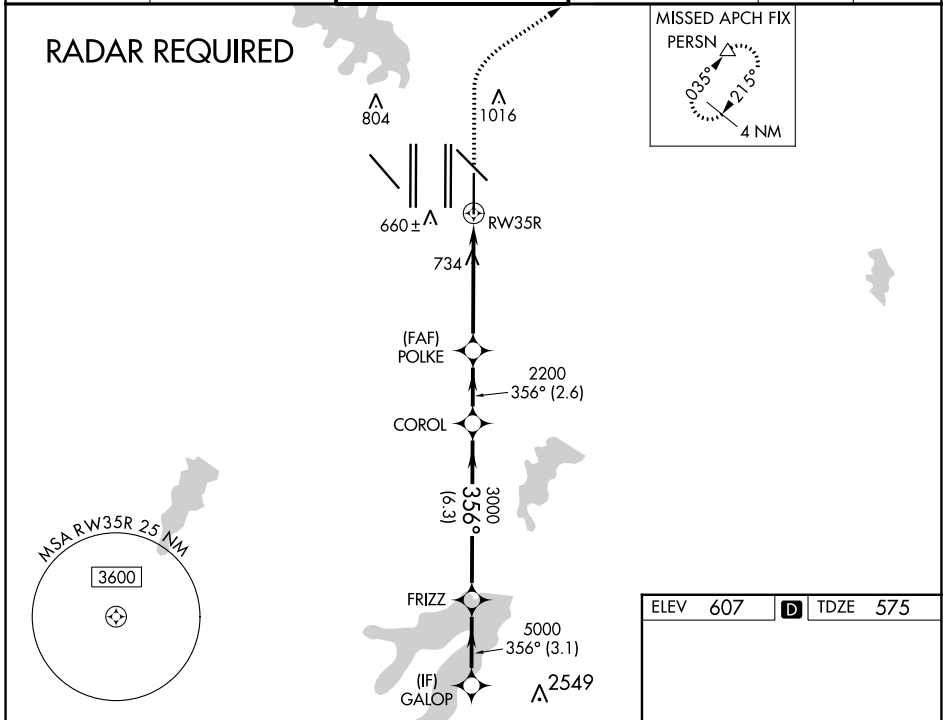
DALLAS-FORT WORTH INTL (DFW)

**▽** For uncompensated Baro-VNAV systems, LNAV/VNAV NA below -4°C (25°F) or above 54°C (130°F). For inop ALSF, increase LNAV/VNAV all Cats visibility to RVR 6000, increase LNAV Cat C/D visibility to 1 $\frac{1}{2}$  mile. Simultaneous approach authorized with Rwy 35 L/C and 36L/R. DME/DME RNP-0.3 NA. LNAV procedure NA during simultaneous operations. Use of FD or AP providing RNAV track guidance required during simultaneous operations.

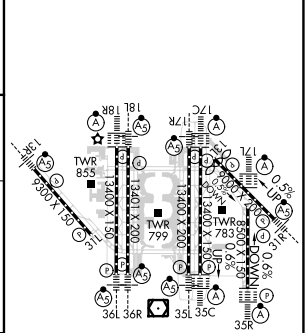
**ALSF-2**

**MISSED APPROACH:**  
Climb to 1040 then climbing right turn to 3000 direct PERSN and hold.

D-ATIS ARR <b>123.775</b> DEP <b>135.925</b>	LONE STAR APP CON <b>119.4</b>	<b>DFW TOWER</b> <b>126.55 127.5 EAST</b> <b>124.15 134.9 WEST</b>	<b>GND CON</b> <b>121.65 121.8 EAST</b> <b>121.85 WEST</b>	CLNC DEL <b>128.25</b>	CPDLC
--	-----------------------------------	--	--	---------------------------	-------



ELEV 607	<b>D</b> TDZE 575
----------	-------------------



CATEGORY	A	B	C	D
LPV DA		775/18	200 (200- $\frac{1}{2}$ )	
LNAV/VNAV DA		917/30	342 (400- $\frac{5}{8}$ )	
LNAV MDA	1040/24	465 (500- $\frac{1}{2}$ )	1040/50	465 (500-1)

HIRL all Rwys  
REIL Rwy 35L and 31L  
TDZ/CL all Rwy except 35L and 31L

SC-2, 26 DEC 2024 to 23 JAN 2025

SC-2, 26 DEC 2024 to 23 JAN 2025